



2012 ALTIMA

INNOVATION THAT LASTS. INNOVATION FOR ALL.  
NISSAN ALTIMA® SEDAN AND COUPE

At Nissan, innovation is at the core of everything we do. It's about turning our ideas and dreams into something that makes a difference in your life, every time you get behind the wheel. So imagine driving an Altima, with all of this at your fingertips:

**Keyless getaway.** The Nissan Intelligent Key® lets you get in your Altima and drive off without ever touching your keys.

**Smooth power.** Unique "gearless" CVT transmission provides a seamless wave of power.

**More on-time arrivals.** Thanks to the available touch-screen navigation with weather and real-time traffic updates.<sup>1,2</sup>

**Easier parking.** Available RearView Monitor helps you see what's directly behind you. Great for tight parking spots.<sup>3</sup>

**Enduring quality.** From searing temperatures to epic potholes, a battery of over 5,000 tests ensures your Altima will last.



visit [www.NissanUSA.com/altima](http://www.NissanUSA.com/altima)

<sup>1</sup>Never program while driving. GPS mapping may not be detailed in all areas or reflect current road regulations. <sup>2</sup>Required XM Radio, XM NavTraffic and XM NavWeather subscriptions sold separately after trial period. Installation costs, one-time activation fee, other fees and taxes will apply. XM NavTraffic available in select markets. XM Services available only to those at least 18 years of age in the 48 contiguous United States and D.C. Fees and programming subject to change. Subscriptions governed by XM Customer Agreement available at [xmradio.com](http://xmradio.com). ©2011 SIRIUS XM Radio Inc. SIRIUS, XM and all related marks and logos are trademarks of SIRIUS XM Radio Inc. and its subsidiaries. <sup>3</sup>Parking aid/convenience feature. Cannot completely eliminate blind spots or warn of moving objects. May not detect every object. Always check surroundings before moving vehicle. Not a substitute for proper backing procedures. Always turn to check what is behind you before backing up.



SHIFT the way you move



## INNOVATION THAT LASTS.

Are you looking for excellent fuel efficiency or spirited performance? Say yes to both, in a Nissan Altima® Sedan or Coupe. And enjoy every exhilarating mile knowing your Altima is built to last. Start the engine with a push of a button. Then make a quick getaway with the outstanding response and smoothness of a virtually gearless CVT transmission or a sporty 6-speed manual. Whether you choose the exciting 4-cylinder or potent V6, you can always count on Altima going out of its way to deliver an invigorating ride. Innovation that lasts. Innovation for all.

MY GIFT  
TO THE CARPOOL.



Nissan Altima 2.5 S Sedan shown in Winter Frost with 2.5 SL Package.



Nissan Altima 3.5 SR Sedan shown in Charcoal Leather with optional equipment.



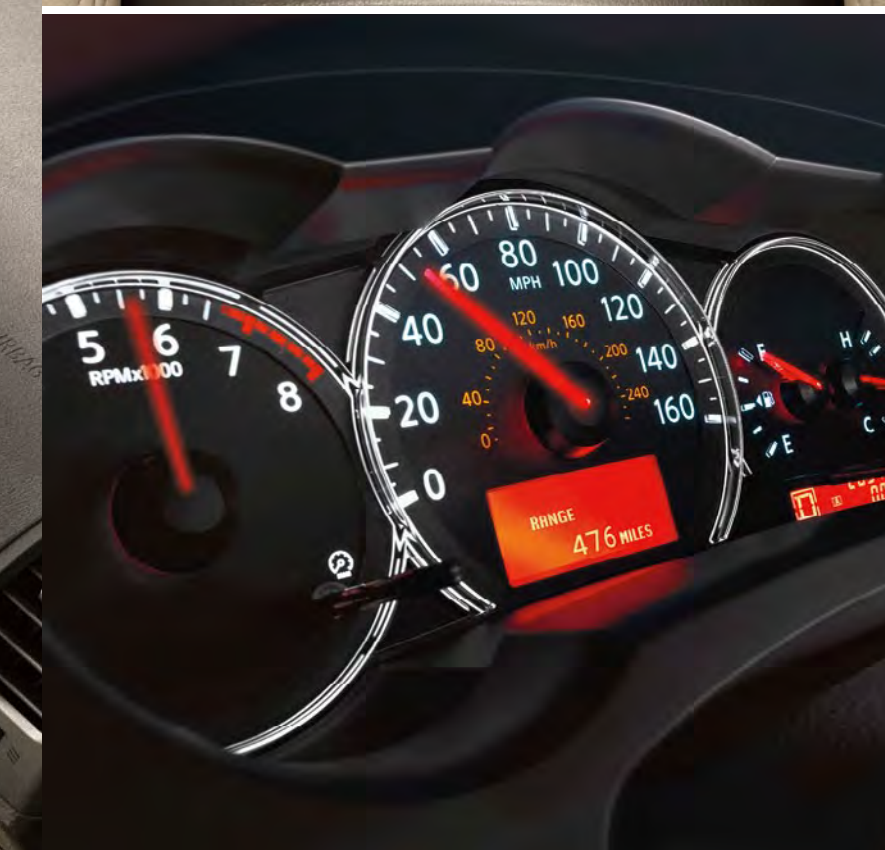
ONE MORE LOOK  
AND I'LL CALL IT A NIGHT.



# SO MUCH TO SHARE

GOING SOLO FEELS ALMOST SELFISH.

Altima's roomy, refined cabin offers up the social space you need and the attention to detail that keeps it feeling personal. You can choose surprisingly upscale options like heated front seats, stitched leather seating, and wood-tone trim or patterned metallic accents. When your Altima is a destination in itself, going solo won't happen often.



Nissan Altima 3.5 SR Sedan shown in Blond Leather with optional equipment.

# THIS VIEW CHANGES EVERYTHING.

To create the Altima Coupe, we didn't just subtract two doors, we started with a clean sheet. The result is stunning. And more. With a shorter wheelbase for agility and a lower ride height for a sporty ride, the Coupe goes beyond a styling statement. You'll see it's a completely different driving experience.



Nissan Altima 3.5 SR Coupe shown in Red Alert with optional equipment.



Nissan Altima 3.5 SR Coupe shown in Winter Frost with optional equipment.





# MY SPOT IN THE UNIVERSE.

From perfectly placed controls to body-hugging buckets, your Altima Coupe's interior combines style with purpose. Unique to coupe, red sport bucket front seats with large bolsters give you lateral support through the turns, while a special pouch in the lower seat cushion lets you keep important items out of sight.

Nissan Altima 3.5 SR Coupe shown in Red Leather with optional equipment.

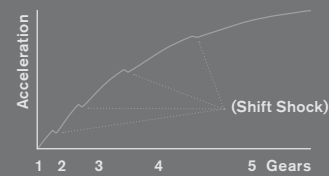


WE LOOK AT THINGS  
**DIFFERENTLY.**

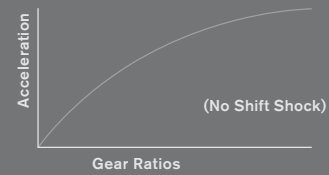
NOW YOU CAN, TOO.

The next few pages will help fill you in on what it's like to have an Altima Sedan or Coupe in your life. From an available 270-hp V6 that is sure to spice up your daily commute to an advanced navigation system that not only gets you to your destination with ease, but recommends places to eat along the way.<sup>1</sup> As you get to know Nissan Altima a little better, we hope you find what you're looking for – plus a few surprises.

Conventional Automatic Transmission



Continuously Variable Transmission



**Innovation beyond gears.** Unlike conventional automatic transmissions, the virtually “gearless” intelligent CVT (Continuously Variable Transmission) makes shift shock and gear hunting a thing of the past. Fully variable gear ratios mean the CVT keeps you in the sweet spot, so power is amazingly quick and smooth whenever you push the throttle.



**TAKE FUN THROUGH ITS PACES.**

**Tap into Nissan’s performance DNA. Altima’s rev-happy engines are paired with an advanced transmission to react instantly to your input. While the suspension and steering are tuned to keep you directly in touch with the whole experience.**

4-CYLINDER **175** HP<sup>1</sup> | **32** MPG HIGHWAY<sup>2</sup>

V6 ENGINE **270** HP | **27** MPG HIGHWAY<sup>2</sup>

**Two engine choices** – Go for the high-energy 175-hp<sup>1</sup> 4-cylinder engine and you’ll get friction-reducing technology like molybdenum-coated pistons and microfinished components. What’s that all mean? You can have V6-like smoothness and performance, while still achieving up to 32 mpg<sup>2</sup> highway. Or opt for Nissan’s legendary VQ 3.5-liter V6 and you’ll find that even the carpool lane can be a thrill. Thanks to a Continuously Variable Valve Timing Control System (CVTCS) that optimizes the opening of intake valves, you’ll always have power on tap – off the line, or passing. And even with all that power at your disposal, you’ll still get impressive fuel economy.

**Continuously Variable Transmission (CVT)** – Altima’s virtually gearless CVT transmission is a game-changer. Its super-smooth action creates the sensation of riding a continuous wave of power.

**6-speed manual transmission** – Purist? A smooth-shifting 6-speed manual is available on Coupe to keep you close to the action.

**Z<sup>®</sup>-inspired suspension** – It’s nice to have a legend to borrow from. Your Altima’s Z<sup>®</sup>-inspired suspension features a lightweight multi-link design for quick response, and a level ride through the twisty stuff.

**Vehicle-speed-sensitive steering** – Light when navigating a parking lot, more weighted when tackling the turns. That’s a win-win. More boost at low speeds makes maneuvering easier, and less boost at higher speeds helps give you a secure, confident feel.

**Vehicle Dynamic Control (VDC)** – A slick spot in a corner can have you suddenly going in a direction you didn’t want. VDC monitors steering and braking in comparison to the vehicle’s actual path and reduces engine power and/or applies appropriate brake pressure to specific wheels to help keep you on your steered path.<sup>3</sup>

**Traction Control System (TCS)** – Altima’s power is wasted if all it does is spin the tires, so when the standard Traction Control System senses drive-wheel spin, it responds by reducing throttle or applying brake pressure to help maintain traction.

**Electronic Brake force Distribution (EBD)** – When you have a car full of passengers, EBD senses the extra weight and sends additional force to the rear brakes for even greater confidence behind the wheel.

**Standard Anti-lock Braking System (ABS)** – The standard ABS pumps the brakes faster than you possibly can in panic-braking situations. This helps prevent wheel lockup, so you can continue to steer around obstacles while braking heavily.

<sup>1</sup>CA emissions (SULEV) equipment causes nominal reductions in horsepower (from 175 hp to 170 hp) and torque (from 180 lb-ft to 175 lb-ft). SULEV vehicles are available in California and some northeastern states. <sup>2</sup>2012 EPA Fuel Economy Estimate. Actual mileage may vary with driving conditions – use for comparison only. <sup>3</sup>VDC, which should remain on when driving except when freeing the vehicle from mud or snow, cannot prevent accidents due to abrupt steering, carelessness, or dangerous driving techniques. Always drive safely.



## GO HIGH-TECH.

Looking to ratchet up your technology game? Your Altima has just what you need. Whether it's entertaining or convenient, if it's advanced and useful, you can bet it's available on Altima.

**A. Nissan Navigation System** – Stay on schedule with turn-by-turn Voice Guidance. Keep your crew entertained with an available in-dash DVD player. And avoid nasty bottlenecks with XM NavTraffic.<sup>8</sup> Enjoy trusted restaurant recommendations from *Zagat Survey*,<sup>9</sup> while XM NavWeather™ helps you stay on top of changing weather. Wherever your life takes you, count on the satellite-based Nissan Navigation System to always keep you one step ahead.<sup>1,2</sup>

**B. RearView Monitor** – Backing up in a crowded parking lot? Get a clearer picture of what's directly behind you with the available RearView Monitor.<sup>3</sup>

**C. Nissan Intelligent Key® with Push Button Ignition** – Forget fumbling to find your keys. Just leave the keys in your pocket or purse, walk up to your Altima and tap a button on the door to unlock it, then just push a button and go with standard Push Button Ignition.

**D. iPod®/USB Interface** – Would you like to be able to connect your iPod® or other portable MP3 player and listen to your own playlists or podcasts? Now you can. You can even control your iPod® through Altima's stereo controls.<sup>4,5</sup>

**E. Bose® Audio System** – With the available 9-speaker Bose® audio system at your disposal, you'll actually feel like you're at the concert. The 4.3" display shows what song is up next on your MP3 CDs and even lets you browse through your folders at the touch of a button.

**Bluetooth® Hands-free Phone System** – Your Altima keeps you connected. Make or receive calls with a touch of a button on the steering wheel. All while your phone stays tucked away.<sup>6</sup>



<sup>1</sup>Never program while driving. GPS mapping may not be detailed in all areas or reflect current road regulations. <sup>2</sup>Required XM Radio, XM NavTraffic and XM NavWeather subscriptions sold separately after trial period. Installation costs, one-time activation fee, other fees and taxes will apply. XM NavTraffic available in select markets. XM Services available only to those at least 18 years of age in the 48 contiguous United States and D.C. Fees and programming subject to change. Subscriptions governed by XM Customer Agreement available at xmradio.com. ©2011 SIRIUS XM Radio Inc. SIRIUS, XM and all related marks and logos are trademarks of SIRIUS XM Radio Inc. and its subsidiaries. <sup>3</sup>Parking aid/convenience feature. Cannot completely eliminate blind spots or warn of moving objects. May not detect every object. Always check surroundings before moving vehicle.

Not a substitute for proper backing procedures. Always turn to check what is behind you before backing up. <sup>4</sup>Driving is serious business and requires your full attention. Do not operate any devices connected to the USB or auxiliary audio input jack while driving. <sup>5</sup>Always give your full attention to driving. Avoid operating your iPod® in such a way that you can be distracted during vehicle operation. See dealer for details. iPod is a registered trademark of Apple, Inc. All rights reserved. iPod not included. <sup>6</sup>Availability of specific features is dependent upon the phone's Bluetooth® support. Please refer to your phone Owner's Manual for details. The Bluetooth word mark and logos are owned by Bluetooth SIG, Inc., and any use of such marks by Nissan is under license.

## MOVE AHEAD WITH CONFIDENCE.


We're not just looking out for your safety, we're taking a stand – incorporating Brake Override Technology across our lineup ahead of others in the industry, and offering an industry-first guide to help ensure the correct installation of child safety seats. That, along with features like six standard air bags and a rigorous durability testing program, should help you feel confident whenever you're in your Altima.

**Durability Tests** – Your Altima is put through over 5,000 quality and durability tests to ensure it keeps performing mile after mile. This includes locking it in a chamber and baking it under 266 bulbs to reach extreme temperatures, as well as putting it through a battery of road tests where we replicate some of the worst road conditions possible.

**Brake Override Technology** – Like every Nissan since 2005, Altima comes standard with Brake Override Technology. It's designed to help slow down your vehicle and bring it to a safe stop in an emergency by overriding accelerator input and reducing engine power when the accelerator and brake are applied simultaneously.

**Nissan Advanced Air Bag System** – Incorporates seat belt sensors and an occupant-classification sensor to inflate the dual-stage supplemental front air bags according to crash severity and seat belt usage. Altima also has front side-impact supplemental air bags built into the seats, so they move with you. In addition, roof-mounted curtain supplemental air bags help protect you in the event of a side impact.<sup>1</sup>

**Front-seat Active Head Restraints** – Designed to move up and forward in certain rear-end collisions to help cushion the blow if one should occur.

**Snug Kids** – Nissan safety engineers have dedicated thousands of hours to evaluating hundreds of child restraints in Nissans. The result: An industry first, The Snug Kids Child Safety Seat Fit Guide. This guide lists child seats that fit the rear seats of Nissan vehicles,  as well as offers tips on correct installation. Look for the **SnugKids** latest Fit Guide at [NissanUSA.com/SnugKids](http://NissanUSA.com/SnugKids).

**LATCH System** – The Altima LATCH System (Lower Anchors and Tethers for CHildren) lets you secure LATCH-compatible child restraints in the rear seats without having to use seat belts or a locking clip.



<sup>1</sup>Air bags are only a supplemental restraint system; always wear your seat belt. Even with the occupant-classification sensor, rear-facing child restraints should not be placed in the front-passenger's seat. Also, all children 12 and under should ride in the rear seat properly secured in child restraints, booster seats, or seat belts according to their size. Air bags will only inflate in certain accidents. See your Owner's Manual for more details. Inflated air bags shown for illustration purposes only. Actual air bags deflate after deployment.

## SPECIFICATIONS

Engine	COUPE		SEDAN		
	2.5 S	3.5 SR	2.5	2.5 S	3.5 SR
QR25DE – 2.5-liter DOHC 16-valve 4-cylinder	■		■	■	
— Horsepower – 175 hp <sup>1</sup> @ 5,600 rpm					
— Torque – 180 lb-ft <sup>1</sup> @ 3,900 rpm					
— Emissions – Tier 2, Bin 5 (Fed); LEV2-SULEV (CA)					
VQ35DE – 3.5-liter DOHC 24-valve V6		■			■
— Horsepower – 270 hp @ 6,000 rpm					
— Torque – 258 lb-ft @ 4,400 rpm					
— Emissions – Tier 2, Bin 5 (Fed)					
Continuously Variable Valve Timing Control System (CVTCS) on intake valves	■	■	■	■	■
Variable induction system					
Nissan Direct Ignition System with iridium-tipped spark plugs					
Electronic drive-by-wire throttle					

Drivetrain	COUPE		SEDAN		
Front engine/Front-Wheel Drive	■	■	■	■	■
6-speed manual transmission with dual-mass flywheel	■	■			
Xtronic CVT <sup>®</sup> (Continuously Variable Transmission) with manual mode	□	□	■	■	■

Wheel/Tires	COUPE		SEDAN		
16" x 7.0" steel wheels with bolt-on wheel covers			■	■	
16" x 7.0" 6-spoke aluminum-alloy wheels				■	■
17" x 7.5" 5-split-spoke aluminum-alloy wheels	■				■
18" x 8.0" 5-split-spoke aluminum-alloy wheels		■			
P215/60R16 all-season tires					
P215/55R17 all-season tires	■				
P235/45R18 all-season tires		■			

Brakes	COUPE		SEDAN		
11.7" Vented front disc/11.5" rear disc brakes	■	■	■	■	■
4-wheel Anti-lock Braking System (ABS)	■	■	■	■	■
Electronic Brake force Distribution (EBD)	■	■	■	■	■

Suspension	COUPE		SEDAN		
Front: Independent subframe-mounted strut-type	■	■	■	■	■
Rear: Multi-link independent	■	■	■	■	■
Front and rear stabilizer bars	■	■	■	■	■
Sport-tuned suspension	■				
Vehicle-speed-sensitive power steering	■	■	■	■	■

Exterior	COUPE		SEDAN		
Automatic on/off headlights	■			■	■
High Intensity Discharge (HID) xenon headlights	■	■			■
Fog lights	■		■	■	■
Dual body-color power outside mirrors	■		■	■	■
Folding outside mirrors with LED turn signal indicators	■			■	■
Heated outside mirrors with timer					
Rear spoiler	■	■		■	■

■ Standard	□ Optional	■ Part of 2.5 S Premium Package (Coupe)
■ Accessory	■ Part of Leather Package (Coupe)	■ Part of 3.5 SR Premium Package (Coupe)
■ Part of 2.5 S Convenience Package (Coupe)	■ Part of Technology Package (Coupe)	

Exterior (continued)	COUPE		SEDAN		
Power sliding glass moonroof with one-touch open/close and tilt feature	■				■
Body-color splash guards					
Special Edition badge					

Audio	COUPE		SEDAN		
Audio system pre-wiring			■		
AM/FM/CD audio system			■		■
Digital Bose <sup>®</sup> audio system with 4.3" color display	■	■	■	■	■
9.3 GB Music Box <sup>™</sup> hard drive for digital music storage and playback	■	■	■	■	■
XM <sup>™</sup> Satellite Radio <sup>5</sup>	■	■	■	■	■
MP3/WMA CD playback capability	■	■	■	■	■
DVD playback capability	■	■	■	■	■
Streaming audio via Bluetooth <sup>®</sup> wireless technology	■	■	■	■	■
Radio Data System (RDS)	■	■	■	■	■
Speed-sensitive volume control	■	■	■	■	■
Auxiliary audio input			■		■
Auxiliary audio/video input jacks (replace standard auxiliary audio input)	■	■	■	■	■
USB connection port for iPod <sup>®</sup> interface and other compatible devices	■	■	■	■	■
Steering-wheel-mounted audio controls	■		■	■	■
4 Speakers			■		■
6 Speakers	■		■		■
9 Speakers	■	■	■	■	■

Interior	COUPE		SEDAN		
Push Button Ignition	■	■	■	■	■
Nissan Intelligent Key <sup>®</sup>	■	■	■	■	■
Nissan Hard Drive Navigation System with 6.5" color touch-screen monitor and voice recognition <sup>8</sup>	■	■	■	■	■
Steering-wheel-mounted navigation menu controls	■	■	■	■	■
XM NavTraffic <sup>™</sup> and XM NavWeather <sup>™</sup>	■	■	■	■	■
Zagat Survey <sup>®</sup> restaurant reviews	■	■	■	■	■
Bluetooth <sup>®</sup> Hands-free Phone System	■	■	■	■	■
RearView Monitor	■	■	■	■	■
HomeLink Universal Transceiver	■	■	■	■	■
Air conditioning with in-cabin microfilter			■		■
Dual Zone Automatic Temperature Control (ATC)	■	■	■	■	■
Rear passenger upper vents					
Power windows with one-touch driver-side auto-up/down with auto-reverse	■	■	■	■	■
Passenger-side front-window one-touch auto-up/down with auto-reverse	■		■		■
Remote front windows down	■		■		■
Key-operated windows up/down	■		■		■
Power door locks with auto-locking feature			■		■
Remote keyless entry with trunk release			■		■
Cruise control with steering-wheel-mounted controls			■		■
Fine Vision electroluminescent gauges			■		■
Trip computer with outside temperature gauge			■		■

■ Part of 2.5 S Special Edition Package (Sedan)	■ Part of 2.5 SL Package (Sedan)
■ Part of 2.5 S Value Package (Sedan)	■ Part of 2.5 S Premium Audio Package (Sedan)
■ Part of 2.5 S Alloy Wheel Package (Sedan)	■ Part of 3.5 SR Sport Package (Sedan)
■ Part of 2.5 S Convenience Package (Sedan)	■ Part of 3.5 SR Premium Package (Sedan)
■ Part of 2.5 S Convenience Plus Package (Sedan)	■ Part of Technology Package (Sedan)

Interior (continued)	COUPE		SEDAN		
Tilt and telescoping steering column	■				
Vehicle-speed-sensitive variable intermittent flat blade windshield wipers	■	■	■	■	■
Dual illuminated visor vanity mirrors with sun visor extenders	■		■		■
Auto-dimming inside rearview mirror with compass	■	■	■	■	■
12-volt DC power outlets (2)			■		■
Retained accessory power			■		■
Overhead sunglasses holder			■		■
Dual-level center console			■		■
Front seat lower cushion storage pockets			■		■
Driver and front-passenger seatback pockets			■		■
Illuminated center console	■	■	■	■	■
Map lights			■		■
Trunk lid trim			■		■

Seating/Appointments	COUPE		SEDAN		
6-way manual adjustable driver's seat			■		■
8-way power adjustable driver's seat	■		■		■
Driver's adjustable lumbar support (power on Sedan models)	■		■	■	■
Leather-appointed seats	■	■	■	■	■
Leather-wrapped steering wheel	■		■	■	■
Leather-wrapped shift knob	■	■	■	■	■
Heated front seats	■	■	■	■	■
Wood-tone trim (Blond interior only)	■		■		■
Metallic trim (not available with Blond interior)			■		■
Premium metallic trim (Charcoal Leather interior only)	■	■	■	■	■
In-board passenger seat fold/release lever with memory/return feature			■		■
60/40 Split fold-flat rear seats with lock	■	■	■	■	■

Safety/Security	COUPE		SEDAN		
Nissan Advanced Air Bag System with dual-stage supplemental front air bags with seat belt and occupant-classification sensors	■	■	■	■	■
Driver and front-passenger seat-mounted side-impact supplemental air bags	■		■		■
Roof-mounted curtain side-impact supplemental air bags for front and rear-seat outboard occupant head protection	■		■		■
Vehicle Dynamic Control (VDC) with Traction Control System (TCS)	■	■	■	■	■
3-point ALR/ELR passenger seat belt system (ELR for driver)	■	■	■	■	■
Front-seat Active Head Restraints	■		■		■
Front seat belts with pretensioners and load limiters	■	■	■	■	■
LATCH System (Lower Anchors and Tethers for Children)	■		■		■
Zone Body construction with front and rear crumple zones	■	■	■	■	■
Hood-buckling creases, pipe-style steel side-door guard beams, and energy-absorbing steering column	■	■	■	■	■
Tire Pressure Monitoring System (TPMS)	■	■	■	■	■
Nissan Vehicle Immobilizer System	■	■	■	■	■
Vehicle Security System	■	■	■	■	■

## COUPE PACKAGES

■ <b>2.5 S Convenience Package</b>
8-way power adjustable driver's seat with manual lumbar support
Automatic on/off headlights
Passenger-side front-window one-touch auto-up/down with auto-reverse
Remote windows down and key-operated windows up/down
Dual illuminated visor vanity mirrors with sun visor extenders
Leather-wrapped steering wheel and steering-wheel mounted audio controls
Wood-tone trim (Blond interior only)

■ <b>2.5 S Premium Package</b>
Power sliding glass moonroof with tilt feature
Dual Zone Automatic Temperature Control (ATC)
Digital Bose <sup>®</sup> audio system with 4.3" color display and 9 speakers
Bluetooth <sup>®</sup> Hands-free Phone System
RearView Monitor
XM <sup>™</sup> Satellite Radio <sup>5</sup>
USB connection port for iPod <sup>®</sup> interface and other compatible devices
MP3/WMA CD playback capability and Radio Data System (RDS)
Folding outside mirrors with LED turn signal indicators
This package requires CVT and 2.5 S Convenience Package.

■ <b>3.5 SR Premium Package</b>
Dual Zone Automatic Temperature Control (ATC)
Digital Bose <sup>®</sup> audio system with 4.3" color display and 9 speakers
Bluetooth <sup>®</sup> Hands-free Phone System
RearView Monitor
XM <sup>™</sup> Satellite Radio <sup>5</sup>
USB connection port for iPod <sup>®</sup> interface and other compatible devices
MP3/WMA CD playback capability and Radio Data System (RDS)
This package is standard on manual transmission models.

■ <b>Leather Package (2.5 S, 3.5 SR)</b>
Leather-appointed seats and heated front seats
High Intensity Discharge (HID) xenon headlights
Leather-wrapped shift knob
HomeLink Universal Transceiver
Auto-dimming inside rearview mirror with compass
Illuminated center console
Premium metallic trim (Charcoal Leather interior only)
This package requires 2.5 S Premium Package on 2.5 S models. 3.5 SR models with CVT require 3.5 SR Premium Package. This package is standard on 3.5 SR manual transmission models.

■ <b>Technology Package (2.5 S, 3.5 SR)</b>
Nissan Hard Drive Navigation System with 6.5" color touch-screen monitor and voice recognition <sup>8</sup>
XM NavTraffic <sup>™</sup> , XM NavWeather <sup>™</sup> and Zagat Survey <sup>®</sup> restaurant reviews
9.3 GB Music Box <sup>™</sup> hard drive for digital music storage and playback
DVD playback capability
Streaming audio via Bluetooth <sup>®</sup> wireless technology
Steering-wheel-mounted navigation menu controls
Auxiliary audio/video input jacks (replace standard auxiliary audio input)
This package requires Leather Package on 2.5 S models. 3.5 SR models require CVT and Leather Package. 4.3" color display and in-mirror compass are deleted with this package.

## SEDAN PACKAGES

■ <b>2.5 S Special Edition Package</b>
16" Aluminum-alloy wheels
Automatic on/off headlights and fog lights and rear spoiler
Leather-wrapped steering wheel and steering-wheel-mounted audio controls
Special Edition badge

■ <b>2.5 S Value Package</b>
Bluetooth <sup>®</sup> Hands-free Phone System
Automatic on/off headlights
Leather-wrapped steering wheel and steering-wheel-mounted audio controls
HomeLink Universal Transceiver
Auto-dimming inside rearview mirror with compass
Passenger-side front-window one-touch auto-up/down with auto-reverse

■ <b>2.5 S Alloy Wheel Package</b>
16" Aluminum-alloy wheels

■ <b>2.5 S Convenience Package</b>
16" Aluminum-alloy wheels
8-way power adjustable driver's seat
Bluetooth <sup>®</sup> Hands-free Phone System
Automatic on/off headlights
Leather-wrapped steering wheel and steering-wheel-mounted audio controls
Passenger-side front-window one-touch auto-up/down with auto-reverse
Remote front windows down and key-operated front windows up/down
Dual illuminated visor vanity mirrors with sun visor extenders
Wood-tone trim (Blond interior only)

■ <b>2.5 S Convenience Plus Package</b>
Power sliding glass moonroof with tilt feature
Dual Zone Automatic Temperature Control (ATC)
Folding outside mirrors with LED turn signal indicators
This package requires 2.5 S Convenience Package.

■ <b>2.5 SL Package</b>
Leather-appointed seats and heated front seats
Driver's power adjustable lumbar support
Leather-wrapped shift knob
HomeLink Universal Transceiver
Auto-dimming inside rearview mirror with compass
Illuminated center console and rear passenger upper vents
Premium metallic trim (Charcoal Leather interior only)
This package requires 2.5 S Convenience Plus Package.

<sup>1</sup>CA emissions (SULEV) equipment causes nominal reductions in horsepower (from 175 hp to 170 hp) and torque (from 180 lb-ft to 175 lb-ft). SULEV vehicles are available in California and some northeastern states. <sup>2</sup>Standard on manual transmission models. <sup>3</sup>Requires Leather Package. <sup>4</sup>Required with Technology Package. <sup>5</sup>Required XM Radio, XM NavTraffic and XM NavWeather subscriptions sold separately after trial period. Installation costs, one-time activation fee, other fees and taxes will apply. XM NavTraffic available in select markets. XM Services available only to those at least 18 years of age in the 48 contiguous United States and D.C. Fees and programming subject to change. Subscriptions governed by XM Customer Agreement available at xmradio.com. ©2011 SIRIUS XM Radio Inc. SIRIUS, XM and all related marks and logos are trademarks of SIRIUS XM Radio Inc. and its subsidiaries. <sup>6</sup>This option deletes digital compass in rearview mirror. <sup>7</sup>The Bluetooth word mark and logos are owned by Bluetooth SIG, Inc., and any use of such marks by Nissan is under license. <sup>8</sup>Bose is a registered trademark of The Bose Corporation. <sup>9</sup>iPod is a registered trademark of Apple, Inc. All rights reserved. iPod not included. <sup>10</sup>Zagat Survey is a registered trademark of Zagat Survey, LLC Ltd.

All illustrations, photographs and specifications in this publication are based on the latest product information available at the time of printing. Some vehicles shown with optional equipment. See the actual vehicle for complete accuracy. Availability and delivery times for particular models or equipment may vary. Nissan North America, Inc. reserves the right to make changes at any time, without prior notice, in prices, colors, materials, equipment, specifications, and models and to discontinue models or equipment. Specifications, options and accessories may differ in Hawaii, U.S. territories and other countries. For additional information on availability, options or accessories, see your Nissan dealer.

At NissanUSA.com, you'll find virtual product demonstrations, a way to "build your own Nissan," a dealer locator, and more information about key Nissan support services. Or if you'd prefer, call 1-800-NISSAN-3 for answers to specific questions about Altima or any other Nissan vehicle. The Nissan names, logos, product names, feature names, and slogans are trademarks owned by or licensed to Nissan Motor Co. Ltd. and/or its North American subsidiaries. **Always wear your seat belt, and please don't drink and drive.** ©2011 Nissan North America, Inc. '12 Altima. 1211235N-04/11-300M-CGI.

■ <b>2.5 S Premium Audio Package</b>
Digital Bose <sup>®</sup> audio system with 4.3" color display and 9 speakers
RearView Monitor
XM <sup>™</sup> Satellite Radio <sup>5</sup>
USB connection port for iPod <sup>®</sup> interface and other compatible devices
MP3/WMA CD playback capability and Radio Data System (RDS)
This package requires 2.5 S Convenience Plus Package.

■ <b>3.5 SR Sport Package</b>
High Intensity Discharge (HID) xenon headlights
Power sliding glass moonroof with tilt feature
Fog lights and rear spoiler
Dual Zone Automatic Temperature Control (ATC)

■ <b>3.5 SR Premium Package</b>
Leather-appointed seats and heated front seats
Driver's power adjustable lumbar support
Leather-wrapped shift knob
Digital Bose <sup>®</sup> audio system with 4.3" color display and 9 speakers
RearView Monitor
XM <sup>™</sup> Satellite Radio <sup>5</sup>
USB connection port for iPod <sup>®</sup> interface and other compatible devices
MP3/WMA CD playback capability and Radio Data System (RDS)
HomeLink Universal Transceiver
Auto-dimming inside rearview mirror with compass
Illuminated center console and rear passenger upper vents
Premium metallic trim (Charcoal Leather interior only)
This package requires 3.5 SR Sport Package.

■ <b>Technology Package (2.5 S, 3.5 SR)</b>
Nissan Hard Drive Navigation System with 6.5" color touch-screen monitor and voice recognition <sup>8</sup>
XM NavTraffic <sup>™</sup> and XM NavWeather <sup>™</sup> and Zagat Survey <sup>®</sup> restaurant reviews
9.3 GB Music Box <sup>™</sup> hard drive for digital music storage and playback
DVD playback capability
Streaming audio via Bluetooth <sup>®</sup> wireless technology
Steering-wheel-mounted navigation menu controls</

## DIMENSIONS/CAPACITIES

### Exterior Dimensions – Inches

	Coupe	Sedan
Wheelbase	105.3	109.3
Overall length	180.9	190.7
Overall width	70.7	70.7
Overall height		
2.5	–	58.0
2.5 S	55.9	58.0
3.5 SR	55.9	57.9
Track width (front/rear)	61.0/61.2	61.0/61.0

### Interior Dimensions – Inches

Front/rear		
Head room without moonroof	39.7/35.6	40.6/36.8
With moonroof	37.2/35.6	40.1/35.9
Leg room	42.5/34.4	44.1/35.8
Hip room	54.2/47.6	56.8/52.5
Shoulder room	53.9/52.4	55.7/55.5

### Capacities

Interior passenger volume (cu. ft.)	89.3	100.7
Cargo volume (cu. ft.)	8.2	15.3
Fuel tank (gals.)	20.0	20.0

### Curb Weights – Lbs.

	2.5	2.5 S	3.5 SR
Manual transmission Coupe	–	3,081	3,294
Xtronic CVT <sup>®</sup> Coupe	–	3,124	3,333
Sedan	3,180	3,193	3,357

### 2012 EPA Fuel Economy Estimates – City/Hwy

	2.5	2.5 S	3.5 SR
Manual transmission Coupe	–	23/31	18/27
Xtronic CVT <sup>®</sup> Coupe	–	23/32	20/27
Sedan	23/32	23/32	20/27

Actual mileage may vary with driving conditions – use for comparison only.

Buying and owning a Nissan is like driving one: quick, convenient, confidence-inspiring.



Nissan Motor Acceptance Corporation. Whether you're buying or leasing, you'll find attractive rates and flexible terms to make your purchase more accessible.

**New Vehicle Limited Warranties.** Protection for your new Nissan includes 3-year/36,000-mile basic coverage and 5-year/60,000-mile powertrain coverage. Terms, conditions and exclusions apply. See Warranty Information Booklet for complete details.

**Security+Plus.<sup>®</sup>** For additional peace of mind, a variety of extended service plans lets you tailor the coverage to your driving habits.

**Maintenance+Plus.<sup>®</sup>** This extended plan ensures your Nissan will receive up to 17 different services and over 33 different inspection items at each visit, using the most up-to-date diagnostic equipment available.

**Genuine Nissan Parts.** When it comes time for service, any necessary replacement parts will be made using Genuine Nissan new or remanufactured parts, or Nissan-approved parts. And they're the only parts to carry Nissan's factory-backed limited warranty.

Nissan's philosophy toward the environment, "Seeking a symbiosis of people, vehicles and nature," describes our ideal for a sustainable mobile society, now and in the future. We launched the Nissan Green Program with specific objectives to realize this goal, and we are pursuing it energetically. For more information, log on to [NissanUSA.com/green](http://NissanUSA.com/green)



# THERE'S AN ALTIMA SEDAN FOR YOU.



### 2.5

- 175-hp 2.5-liter 4-cylinder engine
- Xtronic CVT<sup>®</sup> (Continuously Variable Transmission) with manual mode
- Push Button Ignition and power windows, door locks and outside mirrors
- 4-wheel Anti-lock Braking System (ABS)
- Vehicle Dynamic Control (VDC) with Traction Control System (TCS)
- Remote keyless entry and trunk release
- Air conditioning with in-cabin microfilter
- 6 Standard air bags



### 2.5 S

- Includes 2.5 equipment, plus:
- Nissan Intelligent Key<sup>®</sup>
  - AM/FM/CD audio system with six speakers and auxiliary audio input jack
  - Driver and front-passenger seatback pockets
  - Passenger visor vanity mirror
  - Driver's footrest finisher and carpeted trunk lid trim



### 2.5 S with 2.5 Special Edition Package

- Includes 2.5 S equipment, plus:
- 16" Aluminum-alloy wheels and automatic on/off headlights
  - Fog lights and rear spoiler
  - Leather-wrapped steering wheel
  - Steering-wheel-mounted audio controls
  - Special Edition badge



### 2.5 S with 2.5 SL Package

- Includes 2.5 S equipment, plus:
- Leather-appointed seats with heated front seats
  - Driver's seat power adjustable lumbar support
  - 16" Aluminum-alloy wheels and automatic on/off headlights
  - Leather-wrapped shift knob and HomeLink Universal Transceiver
  - Auto-dimming rearview mirror with compass



### 3.5 SR

- Includes 2.5 S equipment, plus:
- 270-hp 3.5-liter V6 engine
  - 17" Aluminum-alloy wheels and sport-tuned suspension
  - 8-way power adjustable driver's seat and leather-wrapped steering wheel
  - Automatic on/off headlights
  - Bluetooth<sup>®</sup> Hands-free Phone System
  - Folding heated outside mirrors with turn signal indicators

Shown with 3.5 SR Sport Package

## PAINT SELECTIONS



### Winter Frost QX3

	2.5	2.5 S	3.5 SR
Frost Cloth	■	■	
Blond Cloth			■
Blond Leather		■	■
Charcoal Cloth		■	■
Charcoal Leather		■	■



### Dark Slate K501

	2.5	2.5 S	3.5 SR
Frost Cloth	■	■	
Charcoal Cloth			■
Charcoal Leather		■	■



### Super Black KH3

	2.5	2.5 S	3.5 SR
Frost Cloth	■	■	
Blond Leather		■	■
Charcoal Cloth		■	■
Charcoal Leather		■	■



### Ocean Gray RAP

	2.5	2.5 S	3.5 SR
Frost Cloth		■	
Charcoal Cloth		■	■
Charcoal Leather		■	■



### Navy Blue RAB

	2.5	2.5 S	3.5 SR
Blond Cloth		■	■
Blond Leather		■	■
Charcoal Cloth		■	■
Charcoal Leather		■	■



### Tuscan Sun NAD

	2.5	2.5 S	3.5 SR
Blond Cloth		■	■
Blond Leather		■	■
Charcoal Cloth		■	■
Charcoal Leather		■	■



### Brilliant Silver K23

	2.5	2.5 S	3.5 SR
Frost Cloth	■	■	
Charcoal Cloth		■	■
Charcoal Leather		■	■



### Saharan Stone KAH

	2.5	2.5 S	3.5 SR
Blond Cloth		■	
Blond Leather		■	

■ Standard

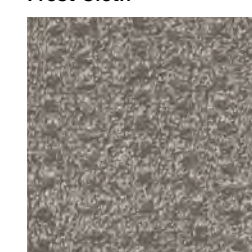
■ Part of 2.5 SL Package (Sedan)

■ Part of 3.5 SR Premium Package (Sedan)

<sup>1</sup>Late availability.

## FABRIC SELECTIONS

### Frost Cloth



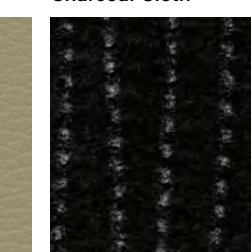
### Blond Cloth



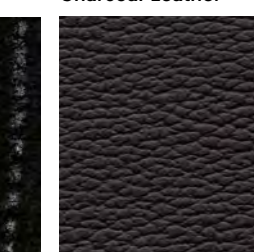
### Blond Leather



### Charcoal Cloth



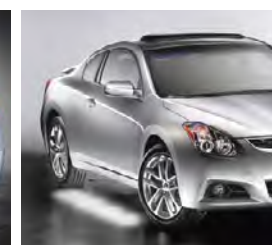
### Charcoal Leather



## ACCESSORIZE.



Rear Decklid Spoiler



Security Lighting



BlueConnect<sup>®</sup> Bluetooth<sup>®</sup> Hands-free Phone System

Every Genuine Nissan Accessory is:

- Custom-fit, custom-designed and durability-tested.
- Backed by Nissan's 3-year/36,000-mile limited warranty.
- Easy to finance with vehicle purchase, for just a few dollars a month.

See your Nissan dealer for details, or go to [NissanUSA.com](http://NissanUSA.com)

# THERE'S AN ALTIMA COUPE FOR YOU.



## 2.5 S

- 175-hp 2.5-liter 4-cylinder engine
- 17" Aluminum-alloy wheels
- Nissan Intelligent Key® with Push Button Ignition
- 6-speed manual transmission
- 4-wheel disc brakes
- 4-wheel Anti-lock Braking System (ABS)
- Vehicle Dynamic Control (VDC) with Traction Control System (TCS)
- AM/FM/CD audio system with six speakers and auxiliary audio input jack
- Power windows, door locks, and outside mirrors
- Cruise control
- 60/40 Split fold-flat rear seats with lock
- Remote keyless entry and trunk release
- Air conditioning with in-cabin microfilter
- Multi-functional trip computer
- 6 Standard air bags

## 3.5 SR

Includes 2.5 S equipment, plus:

- 270-hp 3.5-liter V6 engine
- 18" Aluminum-alloy wheels
- Sport-tuned suspension
- Fog lights
- Larger exhaust outlet chrome-tip finishers
- Power sliding glass moonroof with tilt feature
- Folding heated outside mirrors with LED turn signal indicators
- Dual Zone Automatic Temperature Control (ATC)<sup>1</sup>
- Digital Bose® audio system with XM® Satellite Radio<sup>1</sup>
- Bluetooth® Hands-free Phone System<sup>1</sup>
- RearView Monitor<sup>1</sup>
- USB connection port for iPod® interface and other compatible devices<sup>1,2</sup>
- 8-way power adjustable driver's seat with lumbar support
- Leather-wrapped steering wheel with audio controls
- Automatic on/off headlights



## PAINT SELECTIONS



### Crimson Black GAD

	2.5 S	3.5 SR
Charcoal Cloth	■	■
Charcoal Leather	L ■	L ■ <sup>1</sup>



### Winter Frost QX3

	2.5 S	3.5 SR
Blond Cloth	■	■
Blond Leather	L ■	L ■ <sup>1</sup>
Charcoal Cloth	■	■
Charcoal Leather	L ■	L ■ <sup>1</sup>
Red Leather	L ■	L ■ <sup>1</sup>



### Super Black KH3

	2.5 S	3.5 SR
Charcoal Cloth	■	■
Charcoal Leather	L ■	L ■ <sup>1</sup>
Red Leather	L ■	L ■ <sup>1</sup>



### Dark Slate K50<sup>2</sup>

	2.5 S	3.5 SR
Charcoal Cloth	■	■
Charcoal Leather	L ■	L ■ <sup>1</sup>
Red Leather	L ■	L ■ <sup>1</sup>



### Ocean Gray RAP

	2.5 S	3.5 SR
Charcoal Cloth	■	■
Charcoal Leather	L ■	L ■ <sup>1</sup>



### Red Alert A20

	2.5 S	3.5 SR
Blond Cloth	■	■
Blond Leather	L ■	L ■ <sup>1</sup>
Charcoal Cloth	■	■
Charcoal Leather	L ■	L ■ <sup>1</sup>



### Brilliant Silver K23

	2.5 S	3.5 SR
Charcoal Cloth	■	■
Charcoal Leather	L ■	L ■ <sup>1</sup>
Red Leather	L ■	L ■ <sup>1</sup>



### Navy Blue RAB

	2.5 S	3.5 SR
Blond Cloth	■	■
Blond Leather	L ■	L ■ <sup>1</sup>
Charcoal Cloth	■	■
Charcoal Leather	L ■	L ■ <sup>1</sup>

■ Standard  
L ■ Part of Leather Package

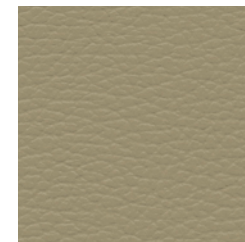
<sup>1</sup>Standard on manual transmission models.  
<sup>2</sup>Late availability.

## FABRIC SELECTIONS

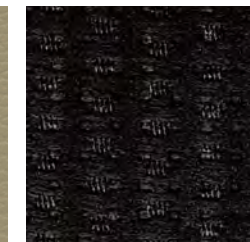
### Blond Cloth



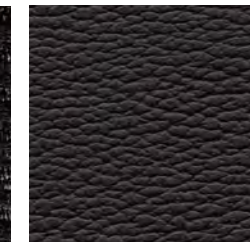
### Blond Leather



### Charcoal Cloth



### Charcoal Leather



### Red Leather

