



ROGUE®

2024



<sup>1</sup>Cargo shown for display purposes only. Cargo and load capacity limited by weight and distribution. Always secure cargo. Heavy loading of the vehicle with cargo, especially on the roof, will affect the handling and stability of the vehicle. <sup>2</sup>**Compatible device, service, and consumer activation of NissanConnect Services package required.** Use only when safe and legal. Subject to third party service availability. For more information see [NissanUSA.com/connect/legal](https://www.nissanusa.com/connect/legal). <sup>3</sup>Never program while driving. GPS mapping may not be detailed in all areas or reflect current road status. <sup>4</sup>Driving is serious business and requires your full attention. If you have to use the connected device while driving, exercise extreme caution at all times so full attention may be given to vehicle operation. External device not included. <sup>5</sup>Available only on Nissan vehicles with AT&T-compatible in-vehicle Wi-Fi hotspot capability. Subject to third party service availability. Trial activation required. Trial ends when all data is used or period ends, whichever comes first. Use features only when safe and legal. Data charges may apply. **Subject to AT&T terms and conditions and its privacy policy, and are not within Nissan's control. Visit [www.att.com/csa](https://www.att.com/csa) for complete terms and conditions.** Trial subscription is subject to change or early termination at any time without notice. Trademarks and trade names are those of their respective owners. <sup>6</sup>Extra cost option. <sup>7</sup>Information displayed is dependent on how vehicle is equipped. Driving is serious business and requires your full attention. If you have to use the feature while driving, exercise extreme caution at all times so full attention may be given to vehicle operation. <sup>8</sup>Leather appointments. <sup>9</sup>Information displayed is dependent on how vehicle is equipped. Do not use for extended periods of time. See Owner's Manual for important safety information. <sup>10</sup>Feature availability varies by vehicle model year, model, trim level, packaging and options. **Consumer activation of NissanConnect® Services SELECT package ("Package") required.** Package trial period included with eligible new vehicle purchase or lease. Trial period may be subject to change or termination at any time and without notice. After trial period ends, monthly subscription fee required. Driving is serious business and requires your full attention. Only use features when safe and legal to do so. Never program while driving. GPS mapping may not be detailed in all areas or reflect current road status. Connectivity service required. App subscriptions may be required. Data rates may apply. Subject to third party service availability. Should such service providers terminate or restrict service or features, service or features may be suspended or terminated without notice or with no liability to Nissan or its partners or agents. Google, Google Play and Google Maps are trademarks of Google LLC. For more information, see [NissanUSA.com/connect/legal](https://www.nissanusa.com/connect/legal). <sup>11</sup>Use the text messaging feature after stopping your vehicle in a safe location. If you have to use the feature while driving, exercise extreme caution at all times so full attention may be given to vehicle operation. Compatible smartphone required. Text rates and/or data usage may apply. <sup>12</sup>Intelligent All-Wheel Drive cannot prevent collisions or provide enhanced traction in all conditions. Always monitor traffic and weather conditions. <sup>13</sup>2024 EPA Fuel Economy Estimates. <sup>14</sup>30 City MPG / 37 Highway MPG / 33 Combined MPG for Rogue® S and SV FWD; 28 City MPG / 35 Highway MPG / 31 Combined MPG for Rogue S and SV AWD; 29 City MPG / 36 Highway MPG / 32 Combined MPG for Rogue SL and Platinum FWD; 28 City MPG / 34 Highway MPG / 31 Combined MPG for Rogue SL and Platinum AWD. Actual mileage may vary with driving conditions. Use for comparison only. <sup>15</sup>HD Enhanced Intelligent Around View® Monitor cannot eliminate blind spots and may not detect every object. Driver should always turn and check surroundings before driving. See Owner's Manual for safety information. <sup>16</sup>Virtual composite 360° view. <sup>17</sup>Availability of features vary by vehicle model year, model, trim level, packaging, and options. Please see Owner's Manual for important feature information. <sup>18</sup>Nissan Safety Shield technologies can't prevent all collisions or warn in all situations. See Owner's Manual for important safety information. <sup>19</sup>Automatic Emergency Braking with Pedestrian Detection cannot prevent all collisions and may not provide warning or braking in all conditions. Driver should monitor traffic conditions and brake as needed to prevent collisions. See Owner's Manual for safety information. <sup>20</sup>Rear Automatic Braking cannot prevent all collisions and may not provide warning or braking in all conditions. Driver should always turn and check surroundings before driving and brake as needed to prevent collisions. See Owner's Manual for safety information. <sup>21</sup>Blind Spot Warning and Intelligent Blind Spot Intervention cannot prevent all collisions and may not detect every object or warn in all situations. Driver should always turn and look before changing lanes. See Owner's Manual for safety information. <sup>22</sup>Rear Cross Traffic Alert may not detect all vehicles. See Owner's Manual for safety information. <sup>23</sup>Lane Departure Warning and Intelligent Lane Intervention only operate when lane markings are able to be detected. See Owner's Manual for safety information. <sup>24</sup>ProPILOT Assist and ProPILOT Assist 1.1 can't prevent collisions. Driver at all times responsible to maintain safety by monitoring traffic, controlling vehicle, and if needed steer, brake or accelerate. System works only when lane markings detected and does not function in all weather, traffic and road conditions. See Owner's Manual for safety information. <sup>25</sup>Intelligent Forward Collision Warning cannot prevent collisions. See Owner's Manual for safety information. <sup>26</sup>Intelligent Driver Alertness cannot provide a warning in every situation. See Owner's Manual for safety information. <sup>27</sup>Remote Engine Start System to be used only in accordance with laws or rules in effect in your vehicle's location. <sup>28</sup>Sonar System may not detect every object. Driver should always check surroundings before driving. See Owner's Manual for safety information. <sup>29</sup>Traffic Sign Recognition may not detect and read all traffic signs in all conditions. Driver should monitor all traffic signs and obey all traffic laws. See Owner's Manual for details. <sup>30</sup>Feature availability varies by vehicle model year, model, trim level, packaging and options. Connectivity service may be required. Alexa is Amazon's cloud-based voice service. Subject to third party service availability. Amazon, Alexa, Echo, and all related marks are trademarks of [Amazon.com](https://www.amazon.com), Inc. or its affiliates. For more information see [NissanUSA.com/connect/legal](https://www.nissanusa.com/connect/legal). <sup>31</sup>**Nissan vehicle with SiriusXM with 360L capability:** SiriusXM with 360L trial period is included with the purchase or lease of a new Nissan vehicle if: (i) vehicle is equipped with SiriusXM with 360L capability and (ii) vehicle is purchased or leased from new Nissan dealer stock. Trial period begins on the purchase or lease date of the qualifying new Nissan vehicle. SiriusXM with 360L is owned and operated by SiriusXM, use of SiriusXM account and its services and features are subject to the SiriusXM Customer Agreement and Privacy Policy available at [siriusxm.com](https://www.siriusxm.com), and are not within Nissan's control. Should SiriusXM terminate, change, or restrict service or features, service or features may be suspended or terminated without notice or with no liability to Nissan or its partners or agents. Nissan and its partners or agents are also not responsible for associated costs or other third party changes that may be required for continued operation due to cellular network unavailability, restriction, or termination (including equipment replacements/upgrades, if available, or roaming charges on alternative networks). Trial period is subject to change or early termination at any time without notice. SiriusXM and related logos are trademarks of Sirius XM Radio Inc. and its respective subsidiaries. **SiriusXM and SiriusXM with 360L:** Service will automatically stop at the end of your trial subscription period unless you decide to continue service. Trial is non-transferable. If you do not wish to enjoy your trial, you can cancel by calling the number below. All SiriusXM services require a subscription, each sold separately by SiriusXM after the trial period. Service subject to the SiriusXM Customer Agreement and Privacy Policy, visit [siriusxm.com](https://www.siriusxm.com) for complete terms and how to cancel which includes online methods or calling 1-866-635-2349. Some services and features are subject to device capabilities and location availability. Satellite service not available in AK & HI. Certain features and/or content may not be available in vehicles with SiriusXM with 360L unless an active data connection is enabled in the vehicle. Content varies by SiriusXM subscription package. All fees, content and features are subject to change. SiriusXM and related logos are trademarks of Sirius XM Radio Inc. and its respective subsidiaries. <sup>32</sup>For complete information concerning warranty coverage, conditions, limitations, and exclusions, see your Nissan dealer, [parts.NissanUSA.com](https://www.nissanusa.com), and read your vehicle's Warranty Information Booklet. <sup>33</sup>All non-Nissan Genuine Accessories are not warranted by Nissan. Refer to accessory product manufacturer for warranty details. Nissan limited warranty also does not cover damages or failures to the vehicle caused by improper installation, improper alterations, or use of non-Nissan-affiliated parts/accessories. Contact your Nissan dealer or read your vehicle's Warranty Information Booklet for details. <sup>34</sup>Genuine Nissan Accessory Roof Rail Crossbars have a maximum weight limit of 100 lbs. <sup>35</sup>Dual Camera Drive Recorder to be used only in accordance with any laws or rules in effect in your vehicle's location that may apply to audio or video recordings of drivers and passengers. <sup>36</sup>Vehicle shown is for illustrative purposes only. Not representative of brochure's model year/model. <sup>37</sup>Compatible smartphone required. Virtual Key to be used only in accordance with laws or rules in effect in your vehicle's location. Actual maximum distance for operation will vary depending on obstructions between compatible device and vehicle. <sup>38</sup>Only front kick plates illuminate. <sup>39</sup>Only use a seat cover approved by the manufacturer of your child car seat – review child car seat manufacturer's owner's manual for seat cover information. <sup>40</sup>Brake Assist cannot prevent all collisions and may not provide warning or braking in all conditions. Driver should monitor traffic conditions and brake as needed to prevent collisions. See Owner's Manual for safety information. <sup>41</sup>Rear View Monitor may not detect every object and does not eliminate blind spots or warn of moving objects. See Owner's Manual for safety information. <sup>42</sup>Vehicle Dynamic Control cannot prevent collisions due to abrupt steering, carelessness, or dangerous driving techniques. It should remain on when driving, except when freeing the vehicle from mud or snow. See Owner's Manual for safety information. <sup>43</sup>Intelligent Trace Control cannot prevent collisions or loss of control. Driver should remain in control of vehicle at all times. See Owner's Manual for safety information. <sup>44</sup>Rear Door Alert System does not detect people or cargo. Always check rear seat before exiting. See Owner's Manual for safety information. <sup>45</sup>Air bags are only a supplemental restraint system. Always wear your seat belt. Rear-facing child restraints should not be placed in the front-passenger's seat. All children 12 and under should ride in the rear seat properly secured in child restraints, booster seats, or seat belts according to their size. Air bags will only inflate in certain accidents. See Owner's Manual for safety information. <sup>46</sup>Tire Pressure Monitoring System is not a substitute for regular tire pressure checks. See Owner's Manual for safety information. <sup>47</sup>Vehicle must be on for the Easy-Fill Tire Alert to operate. <sup>48</sup>Roadside assistance coverage period varies by model year/model. For complete information concerning warranty coverage, conditions and exclusions, see your Nissan dealer and read the warranty information booklet for the model year/model. <sup>49</sup>Driving is serious business and requires your full attention. Do not operate any devices connected to the power outlets while driving. Amazon, Alexa, Echo, and all related marks are trademarks of Amazon.com, Inc. or its affiliates. Apple CarPlay®, Apple Music®, Apple Watch®, and Siri® are registered trademarks of Apple, Inc. Bluetooth® word mark and logos are owned by Bluetooth SIG, Inc., and any use of such marks by Nissan is under license. Bose® is a registered trademark of The Bose Corporation. Facebook® is a registered trademark of Facebook, Inc. Google, Android, Android Auto, YouTube Music, and other marks are trademarks of Google LLC. Google Assistant is not available in certain languages and countries. Compatible Android phone and compatible active data plan required. To wirelessly use Android Auto on your car display, you need a compatible Android smartphone with an active data plan. You can check which smartphones are compatible at [g.co/androidauto/requirements](https://www.g.co/androidauto/requirements). HomeLink® is a registered trademark of Gentex Corporation. Instagram® is a registered trademark of Instagram, LLC. The Sirius®, XM®, and SiriusXM® names and all related marks and logos are trademarks of Sirius XM Radio Inc. All other trademarks are the property of their respective owners. Twitter® is a registered trademark of Twitter, Inc. Yakima® is a registered trademark of Yakima Products, Inc. This brochure is intended for general descriptive and informational purposes only. It is subject to change and does not constitute an offer, representation or warranty (express or implied) by Nissan North America, Inc. Interested parties should confirm the accuracy of any information in this brochure as it relates to a vehicle directly with Nissan North America, Inc., before relying on it to make a purchase decision. Nissan North America, Inc., reserves the right to make changes, at any time, without prior notice, in prices, colors, materials, equipment, specifications, and models and to discontinue models or equipment. Due to continuous product development and other pre- and post-production factors, actual vehicle, materials and specifications may vary from this brochure. Some vehicles shown with optional equipment. See the actual vehicle for complete accuracy. Availability and delivery times for particular models or equipment may vary. Specifications, options and accessories may differ in Hawaii, U.S. territories and other countries. For additional information on availability, options or accessories, see your Nissan dealer or contact Nissan North America, Inc. At [NissanUSA.com](https://www.nissanusa.com), you'll find virtual product demonstrations, a way to "build your own Nissan," a dealer locator, and more information about key Nissan support services. Or if you'd prefer, call **1-800-NISSAN-3** for answers to specific questions about Rogue® or any other Nissan vehicle. The Nissan names, logos, product names, feature names, and slogans are trademarks owned by or licensed to Nissan Motor Co. Ltd. and/or its North American subsidiaries. Other trademarks and trade names are those of their respective owners. Always wear your seat belt, and please drive responsibly. ©2023 Nissan North America, Inc. <sup>24</sup>Rogue. 2417160-L-N-12/23-100K-KSL

# The road to everywhere starts here

Adventure is out there waiting for you. And the new 2024 Nissan Rogue® is the ride to get you there. Generous cargo space lets you bring the family and your gear.<sup>1</sup> A new, bigger touch-screen display makes navigating your vitals even easier.<sup>2,3</sup> And advanced connectivity that taps into up to seven devices means the kids can get in on the action, too.<sup>4,5</sup> The capacity for fun never ends in the bold, new Rogue.

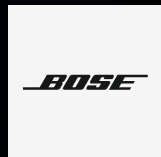


**Nissan Rogue® Platinum AWD** shown in Two-tone Champagne Silver Metallic / Super Black<sup>6</sup> with optional equipment.



## Welcome to your mobile sanctuary

Inside the new Rogue,<sup>®</sup> you'll find all of the controls to all of your data in all the right places, bringing a sense of peace to every great escape. Get control of your surroundings with the available advanced displays that showcase all of Rogue's vital signs.<sup>3,9</sup> Find comfort with the available memory driver's seat, available heated front seats, and available heated steering wheel. Sophistication and style surround you and your crew and make the new Rogue the ultimate road trip-ready ride.



**Tune in to the sound** Bose, a leader in high-fidelity sound systems, designed an available highly customized listening experience for Rogue. Based on proprietary design and the acoustical analysis of the cabin, Bose brings the power of sound to every seat.

Nissan Rogue<sup>®</sup> Platinum AWD shown in Chestnut Quilted Semi-aniline Leather with optional equipment.<sup>8</sup>



### Good things happen in threes

Three advanced displays deliver three times the personalization. An available larger 12.3" touch-screen display,<sup>2</sup> available 12.3" digital dashboard,<sup>7</sup> and available Head-Up Display allow you to customize your data your way.<sup>9</sup> And with available NissanConnect<sup>®</sup> with Google built-in, you can talk to Google Assistant to find nearby restaurants and stores, call or text friends, and even access music to keep your crew entertained for hours.<sup>2, 10, 11</sup>

### Don't lose sight of what matters

Check out your available 12.3" digital dashboard or the available Head-Up Display while keeping focused on the road ahead. The available Head-Up Display projects onto the lower windshield, providing you with data like speed, turn-by-turn directions, and more.<sup>3, 7, 9</sup>



### Experience maximum compatibility



A well-connected family is a happy family. Standard Apple CarPlay<sup>®</sup> can help. Seamlessly connect to your maps, your apps, and your digital world, and go.<sup>2, 3, 4</sup>

Talk to Google Assistant on Android Auto<sup>™</sup> and get things done with your voice. Easily send messages, get directions, control media, and more.<sup>2, 3, 4, 11</sup>





## The vortex of good times

This is where the memories happen — the thrills, the spills, the laughter, and the triumphs. Fortunately for you, the new Rogue® offers plenty of space for five and enough room for gear in the back, too.<sup>1</sup> The second row is easy for your crew to access with rear doors that open almost 90 degrees. Available soft quilted semi-aniline leather-appointed seats deliver on comfort and style, and the available Tri-Zone Automatic Temperature Control gives you and your passengers three separate comfort zones so everyone can find the right temperature. Available rear USB-C ports help keep everyone connected, and the kids can even forecast the weather by simply looking up through the available Dual Panel Panoramic Moonroof.<sup>4</sup>

**Nissan Rogue® Platinum AWD** shown in Charcoal Quilted Semi-aniline Leather with optional equipment.<sup>8</sup>



### Set it down, charge it up

No mess, no cords, no clutter. Get your invisible charge by simply setting down your compatible smartphone onto the available wireless charger, and the powering begins.<sup>4</sup>

### Left or right, out of sight

The armrest compartment has a butterfly design so that both front and rear passengers can access it. It's just big enough to store the essentials and still keep your inside clear of clutter.



### Plan your great escape

The new Rogue<sup>®</sup> is designed to accommodate all sizes of cargo, from sunglasses and pens that fit in the under-console passageway to shopping bags and camping gear that fit in the cargo area. There's even a special spot for your milk cartons. This cargo area is loaded with possibilities, including a 60/40-split fold-down second row, an available Divide-N-Hide<sup>®</sup> cargo system, and a set of adjustable dividers to create many different storage configurations. Find the perfect fit for school days, vacation days, and almost everything in between.<sup>1</sup>



## Life begins where the road ends

This ultimate family SUV is designed for what adventures lie ahead. Weekends at the cabin, city escapes, days at the lake, you name it. Capability is at the core of every new Rogue.<sup>®</sup> The available Intelligent All-Wheel Drive system helps give you the traction you need to go from street to dirt to snow, including five Drive Modes, available with the twist of a dial.<sup>13</sup>

**Off-Road Mode** The real fun starts when smooth pavement turns to gravel. Available Off-Road Mode is uniquely tuned to help you get up to speed. By balancing the transmission and throttle response, Rogue tailors your off-road experience for maximum confidence.<sup>13</sup>

**Snow Mode** Who doesn't love fresh snowfall? Rogue sure does. Get the most out of your next snow day with available Snow Mode, engineered to help you make fresh tracks. It knows to back off on the throttle and shift to a higher gear ratio, helping you stay in control.<sup>13</sup>

**Eco Mode** Get more miles between fill-ups. Switch it to Eco Mode to help increase your fuel economy. When selected, engine and transmission controls change to help you drive as efficiently as possible.<sup>13, 14</sup>

**Sport Mode** Feeling sporty? Dial up Sport Mode, and the Rogue responds with tighter steering and sharper throttle response. You respond with growing confidence and huge grins as you enter every twist and turn.<sup>13</sup>



Nissan Rogue<sup>®</sup> Platinum AWD shown in Scarlet Ember Tintcoat<sup>6</sup> with optional equipment.  
Nissan Rogue<sup>®</sup> Platinum AWD shown in Two-tone Deep Ocean Blue Metallic / Super Black<sup>6</sup> with optional equipment.



### Efficiency, meet power

Up to **34** | Up to **201** | Up to **225**  
 hwy mpg<sup>14</sup> | horsepower | lb-ft of torque

The new Rogue<sup>®</sup> is arguably the perfect getaway SUV. The Variable Compression Turbo (VC-Turbo<sup>®</sup>) engine that powers Rogue has the capability to take you far. It delivers low-compression, turbocharged power and high-compression, fuel-sipping efficiency.<sup>14</sup> An abundance of power combined with long-distance efficiency just might be the perfect match.<sup>14</sup>



### Standard Nissan Safety Shield<sup>®</sup> 360

Feel confident knowing that Rogue has a set of systems that can help look out for you and your precious cargo. Nissan Safety Shield 360 includes six features that monitor in front of you, behind you, and on either side and can step in to help keep you safe.<sup>17, 18</sup>

- Automatic Emergency Braking with Pedestrian Detection<sup>19</sup>
- Rear Automatic Braking<sup>20</sup>
- Blind Spot Warning<sup>21</sup>
- Rear Cross Traffic Alert<sup>22</sup>
- Lane Departure Warning<sup>23</sup>
- High Beam Assist

### Spot it, spin it, fit it

**Available HD Enhanced Intelligent Around View<sup>®</sup> Monitor** Rogue helps make fitting into tight parking spots easier with the available HD Enhanced Intelligent Around View Monitor. It gives you a virtual composite 360° bird's-eye view, and it even lets you interact with the image, spin it around, and select from one of eight fixed 3D views for the best angle. You can select from split-screen close-ups of the front, rear, and curbside views to get the best possible fit. No more scraping tires.<sup>15, 16</sup>



### Taking the edge off traffic

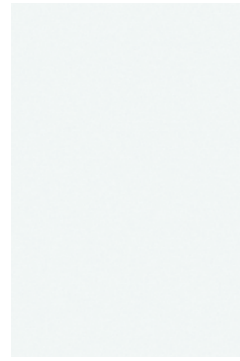
Traffic conditions are constantly changing. Rogue can help you adapt.<sup>24</sup>

Available ProPILOT Assist helps you ease through the stop-and-go of highway traffic and also helps you stay centered in your lane. Once engaged, ProPILOT Assist allows you to ease your grip on the wheel, relax your feet, and enjoy the ride. Opt for ProPILOT Assist 1.1, and the system utilizes highway mapping to actually read the road and give you a totally new perspective. It can adjust your speed to smooth out upcoming turns, junctions, and can even track posted speed limits and alter your set speed accordingly.<sup>24</sup>





## CHOOSE YOUR COLOR



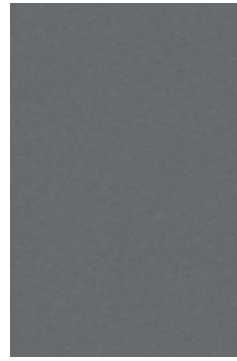
Glacier White



Everest White TriCoat<sup>6</sup>



Brilliant Silver Metallic



Gun Metallic



Boulder Gray Pearl<sup>6</sup>

S SV SL PLT

S SV SL PLT

S SV SL PLT

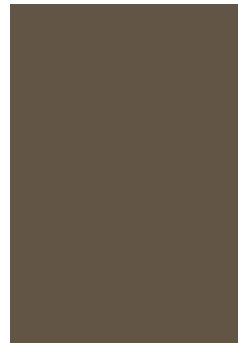
S SV SL PLT

S SV SL PLT

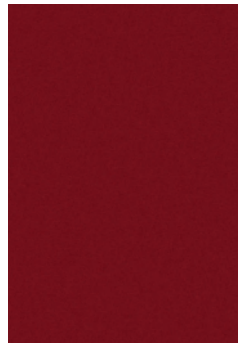
Charcoal Cloth	■				■					■										
Charcoal Cloth						■					■									
Light Gray Cloth							■					■								
Charcoal Prima-Tex <sup>®</sup>								P					P							
Light Gray Prima-Tex <sup>®</sup>									P											
Charcoal Leather <sup>®</sup>														■						
Light Gray Leather <sup>®</sup>															■					
Charcoal Semi-aniline Leather <sup>®</sup>																			■	
Chestnut Semi-aniline Leather <sup>®</sup>																				■



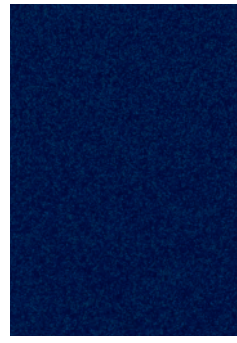
Champagne Silver Metallic



Baja Storm Metallic



Scarlet Ember Tintcoat<sup>6</sup>



Deep Ocean Blue Metallic



Super Black

S SV SL PLT

S SV SL PLT

S SV SL PLT

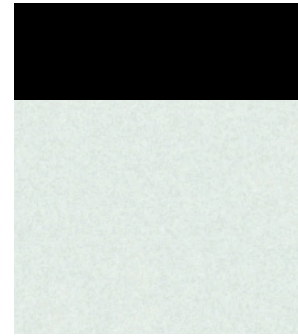
S SV SL PLT

S SV SL PLT

■ Standard  
P Part of SV Premium Package

Nissan has taken care to ensure that the color swatches presented here are the closest possible representations of actual vehicle colors. Swatches may vary slightly due to the printing process and whether viewed in daylight, fluorescent or incandescent light. Please see the actual colors at your dealer.

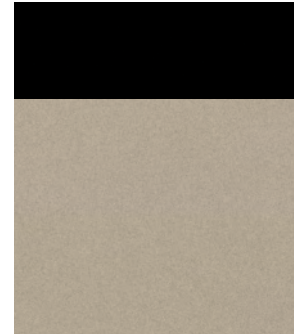
Charcoal Cloth										■										
Charcoal Cloth											■									
Light Gray Cloth												■								
Charcoal Prima-Tex <sup>®</sup>													P							
Light Gray Prima-Tex <sup>®</sup>														P						
Charcoal Leather <sup>®</sup>															■					
Light Gray Leather <sup>®</sup>																■				
Charcoal Semi-aniline Leather <sup>®</sup>																			■	
Chestnut Semi-aniline Leather <sup>®</sup>																				■



Two-tone Everest White TriCoat / Super Black<sup>6</sup>



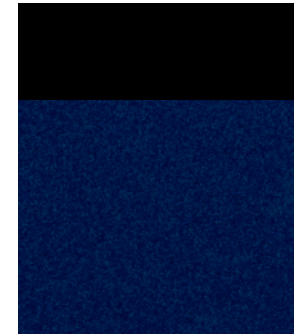
Two-tone Boulder Gray Pearl / Super Black<sup>6</sup>



Two-tone Champagne Silver Metallic / Super Black<sup>6</sup>



Two-tone Baja Storm Metallic / Super Black<sup>6</sup>



Two-tone Deep Ocean Blue Metallic / Super Black<sup>6</sup>

S SV SL PLT

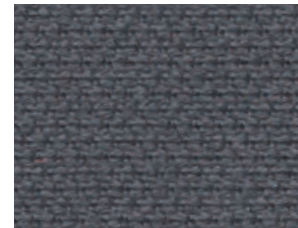
S SV SL PLT

S SV SL PLT

S SV SL PLT

S SV SL PLT


## CHOOSE YOUR INTERIOR



Charcoal Cloth  
S



Charcoal Cloth  
SV



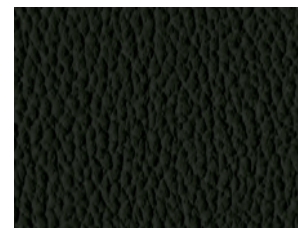
Light Gray Cloth  
SV



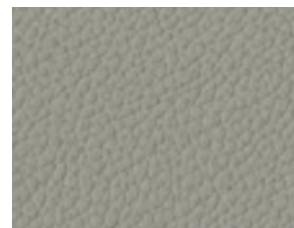
Charcoal Prima-Tex<sup>®</sup>  
SV



Light Gray Prima-Tex<sup>®</sup>  
SV



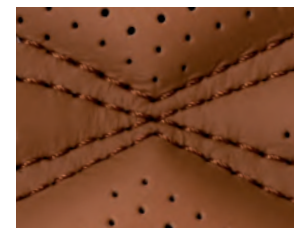
Charcoal Leather<sup>®</sup>  
SL



Light Gray Leather<sup>®</sup>  
SL



Charcoal Semi-aniline Leather<sup>®</sup>  
Platinum



Chestnut Semi-aniline Leather<sup>®</sup>  
Platinum

## CHOOSE YOUR TRIM LEVEL

### S

- Available Intelligent All-Wheel Drive (AWD) with Drive Mode Dial<sup>13</sup>
- Intelligent Forward Collision Warning<sup>25</sup>
- Automatic Emergency Braking with Pedestrian Detection<sup>19</sup>
- Lane Departure Warning<sup>23</sup>
- Blind Spot Warning<sup>21</sup>
- Rear Cross Traffic Alert<sup>22</sup>
- Rear Automatic Braking<sup>20</sup>
- High Beam Assist
- Intelligent Driver Alertness<sup>26</sup>
- 17" Aluminum-alloy wheels
- LED headlights with LED Daytime Running Lights
- LED taillights
- Advanced Drive-Assist® Display<sup>7</sup>
- NissanConnect® 8" color touch-screen display<sup>2</sup>
- Apple CarPlay® integration<sup>2</sup>
- Android Auto™ compatibility<sup>2</sup>
- Two USB-C ports<sup>4</sup>
- Streaming Audio via Bluetooth®<sup>2</sup>



### SV INCLUDES S EQUIPMENT PLUS:

- ProPILOT Assist<sup>24</sup>
- Intelligent Lane Intervention<sup>23</sup>
- Intelligent Blind Spot Intervention<sup>21</sup>
- 18" Aluminum-alloy wheels
- Heated outside mirrors
- Power liftgate
- Dual Zone Automatic Temperature Control
- Nissan Intelligent Key® with Push Button Ignition
- Approach unlock/walk away lock
- Remote Engine Start System<sup>27</sup> with Intelligent Climate Control
- 8-way power driver's seat, with 2-way power lumbar support
- In-vehicle data and Wi-Fi<sup>2, 5</sup>
- Four USB-C ports<sup>4</sup>
- NissanConnect® Services powered by SiriusXM<sup>2</sup>

#### AVAILABLE PACKAGE:

- Premium Package



### SL INCLUDES SV EQUIPMENT PLUS:

- ProPILOT Assist 1.1<sup>24</sup>
- HD Enhanced Intelligent Around View® Monitor<sup>15</sup>
- Front, Rear, and Side Sonar System<sup>28</sup>
- Traffic Sign Recognition<sup>29</sup>
- 19" Aluminum-alloy wheels
- Outside mirrors with LED turn signal indicators
- Roof rails<sup>1</sup>
- Auto-dimming inside rearview mirror
- Divide-N-Hide® cargo system<sup>1</sup>
- Leather-appointed seats
- Heated front seats
- Leather-wrapped heated steering wheel
- 12.3" Digital dashboard with fully digital gauges<sup>7</sup>
- NissanConnect® 12.3" color display with multi-touch control<sup>2</sup>
- Alexa Built-in<sup>2, 30</sup>
- Wireless Apple CarPlay® integration<sup>2</sup>
- Wireless Android Auto™ compatibility<sup>2</sup>
- Google built-in<sup>2, 10</sup>
- Hybrid Radio<sup>2</sup>
- Wireless charger<sup>4</sup>
- SiriusXM with 360L<sup>31</sup>

#### AVAILABLE PACKAGE:

- Premium Package



### PLATINUM INCLUDES SL EQUIPMENT PLUS:

- 19" Unique aluminum-alloy wheels
- Dual Panel Panoramic Moonroof
- Outside mirrors with reverse tilt-down feature
- Memory system — driver's seat and outside mirrors
- Remote-folding rear seats
- Quilted semi-aniline leather-appointed seats
- Bose Premium Audio System including dual-driver woofer

#### AVAILABLE PACKAGE:

- Premium Package

**BOSE**



## CHOOSE YOUR PACKAGE

### SV PREMIUM PACKAGE

- Roof rails<sup>1</sup>
- Dual Panel Panoramic Moonroof
- Rear door sunshades
- Prima-Tex® seats
- Leather-wrapped steering wheel
- Heated front seats
- Heated steering wheel



### SL PREMIUM PACKAGE

- Motion Activated Liftgate
- Dual Panel Panoramic Moonroof
- Tri-Zone Automatic Temperature Control
- Rear door sunshades
- Outside mirrors with reverse tilt-down feature
- Memory system — driver's seat and outside mirrors



### PLATINUM PREMIUM PACKAGE

- Motion Activated Liftgate
- Tri-Zone Automatic Temperature Control
- Rear door sunshades
- Heated rear seats
- Head-Up Display<sup>9</sup>



NISSAN ROGUE® ACCESSORIES

## Turn brand-new into all you

Every Genuine Nissan Accessory is custom-fit, custom-designed, and durability-tested. Each one is backed by Nissan's 3-year/36,000-mile (whichever occurs first) limited warranty (if installed by the dealer at the time of new vehicle purchase) and can be financed when installed by the dealer at time of new vehicle purchase.<sup>32</sup> Affiliated Yakima® accessories are not warranted by Nissan. Refer to product manufacturer for warranty details. Nissan Limited Warranty does not cover damages or failures to the vehicle caused by improper installation or alterations of any Nissan-affiliated accessory or component. Contact your dealer/retailer for details.<sup>33</sup>

For more information and to shop online for Rogue Genuine Nissan Accessories, go to [bit.ly/24Rogue-Accys](https://bit.ly/24Rogue-Accys)



Rear/Left: **Nissan Rogue® Platinum AWD** shown in Two-tone Champagne Silver Metallic / Super Black<sup>6</sup> with Exterior Ground Lighting w/ Logo, Side-Window Deflectors (4-piece set), Satin Chrome Rear Bumper Protector, Splash Guards (4-piece set), Roof Rail Crossbars,<sup>1, 35</sup> and Affiliated: Yakima® ForkLift — Fork Mount Bike Rack.<sup>1, 33</sup>

Front/Right: **Nissan Rogue® Platinum AWD** shown in Deep Ocean Blue Metallic with Exterior Ground Lighting w/ Logo, Hood Wind Deflector, Side-Window Deflectors (4-piece set), Splash Guards (4-piece set), Roof Rail Crossbars,<sup>1, 35</sup> and Affiliated: Yakima® LoadWarrior — Cargo Basket.<sup>1, 33</sup>

## CHOOSE YOUR ACCESSORIES

- A. **Dual Camera Drive Recorder<sup>36, 37</sup>**  
Keep a video record of your drive for extra confidence.
- B. **Retractable Pet Divider, Carpeted Cargo Area Protector, and Seatback Protector (sold separately)**  
Help keep your pet secure and cargo area protected.
- C. **Virtual Key<sup>38</sup>**  
Lock or unlock the doors and share access to your Rogue with up to 7 people using an app on your compatible smartphone or Apple Watch.<sup>®</sup>
- D. **Illuminated Kick Plates and Interior Accent Lighting (sold separately)<sup>39</sup>**  
For a grand entry every time.
- E. **Soft-Sided Cargo Cooler and Satin Chrome Rear Bumper Protector (sold separately)**  
Help keep your food and drinks cool and protect your bumper in your next adventure.
- F. **Tablet Holder<sup>37</sup>**  
Keep your tablet within easy reach.
- G. **Carpeted Floor Mats and All-Season Floor Mats — High Wall Liners (sold separately)**  
Protect the floor and help keep things clean.
- H. **Trash Bin<sup>37</sup>**  
Keep things clean with this convenient spot for trash.

Additional Accessories:

- Rear USB-PD Charging Ports
- Security Impact Sensor
- Wireless Smartphone Charger<sup>4</sup>
- Remote Engine Start<sup>27</sup>
- Clear Hood Protector
- Frameless Auto-dimming Rearview Mirror w/ HomeLink<sup>®</sup>
- Retractable Cargo Cover
- Cargo Blocks/Stabilizers<sup>1</sup>
- Removable Tote Cargo Organizer
- Cargo Net
- Seat Cover w/ Storage<sup>40</sup>
- And More

