

**2018
SERVICE AND
MAINTENANCE GUIDE**



TABLE OF CONTENTS



OWNER'S LITERATURE INFORMATION	2
INTRODUCTION	
NISSAN Maintenance	3
Why NISSAN Service?	4
NISSAN MAINTENANCE & REPAIR SUPPORT	
Extended Service Plans	9
Genuine NISSAN Collision Parts	10
Genuine NISSAN Parts You Can Rely On	62,66,74,78
NISSAN Services Designed With You in Mind	70
SCHEDULED MAINTENANCE GUIDE	
GT-R Performance Optimization Services	47,49,51,53
Determining the Proper Maintenance Interval	11
Explanation of Scheduled Maintenance Items	12
Additional Maintenance Items	14
Setting Guide of Wheel Alignment Depending on the Customer's Driving	40
Tire Replacement Record	42
Transmission Assembly/Parts Replacement Record	44
Maintenance Schedule	46
Maintenance Log	81

OWNER'S LITERATURE INFORMATION

INDEX OF TOPICS

WHERE TO FIND INFORMATION

Recommended Fuel, Lubricants, Fluids	Owner's Manual: chapter 9
Starting and Driving Your Vehicle	Owner's Manual: chapter 5
Security System Operation.....	Owner's Manual: chapter 2
Changing a Flat Tire.....	Owner's Manual: chapter 6, also see chapter 8
New Vehicle Limited Warranty.....	"2018 New Vehicle Limited Warranty" section in Warranty Information Booklet
Federal Emission Control Warranties	"Federal Vehicle Emission Control Limited Warranties" section in Warranty Information Booklet
California Emission Control Warranties	"California Vehicle Emission Control Warranties" section in Warranty Information Booklet
Tire Pressure/Rotation	Owner's Manual: chapter 8
Tire Warranties/Safety Information	Individual tire manufacturer warranty sections in Warranty Information Booklet
Consumer Affairs Assistance.....	"Nissan's Customer Care Program" section in Warranty Information Booklet and "Overview" section in Customer Care/Lemon Law Information Booklet*
Do It Yourself Information	Owner's Manual: chapter 8
General Maintenance.....	Owner's Manual: chapter 8

* Not applicable outside the United States



Maintain Your Investment

Preventative scheduled maintenance is an important investment to optimize the performance, reliability, safety and resale value of your NISSAN GT-R. Scheduling your vehicle's maintenance at the recommended intervals will ensure your vehicle is running at its best.

We want you to enjoy your NISSAN GT-R. This Service and Maintenance Guide is designed to help you make sure your vehicle receives proper and timely maintenance that is necessary. Key services are explained in detail, along with an outline of scheduled maintenance to help you maintain your vehicle. Your GT-R certified NISSAN dealer can assist you in determining the best schedule based on your driving habits and local conditions.

Failure to perform scheduled maintenance may result in excluding portions of your vehicle from warranty coverage and may reduce the performance, safety, reliability and/or resale value of your vehicle. For details of the warranty, please read the 2018 NISSAN GT-R Warranty Information Booklet.

WHY NISSAN SERVICE?*



GENUINE SERVICE

As to specific service to the GT-R, special skills, knowledge and equipment are necessary to properly inspect and adjust the GT-R engine, transmission, suspension and brakes to maintain performance. A GT-R certified NISSAN dealer has the GT-R certified technical staff and the special equipment to properly maintain your GT-R.

Many general maintenance items can be performed at all NISSAN dealers. However, make sure the specified fluids and parts are used when the maintenance is performed.



For All Your Service Needs

* May differ or not apply outside the United States, please inquire of your dealer.

WHY NISSAN SERVICE?*



To safeguard the quality, reliability and safety of your vehicle, a GT-R certified NISSAN dealer is recommended for maintenance or repair. GT-R certified NISSAN dealers offer you these advantages:

- NISSAN trained and certified GT-R technicians
- Immediate access to warranty service history and NISSAN technical information
- Latest diagnostic, special tools and service techniques
- Genuine NISSAN Parts that meet NISSAN's demanding standards
- 12 month/12,000 mile parts and labor limited warranty when Genuine NISSAN Parts are installed by your dealer
- Lifetime limited warranty on select replacement parts
- Clear, up-front estimates
- Nearly 500 GT-R certified locations nationwide
- Shuttle service/Courtesy van (at participating dealers)
- Access to a NISSAN GT-R certified body repair facility

Your GT-R certified NISSAN dealer is a full-service maintenance and repair center. We recommend using authorized NISSAN Service and Genuine NISSAN Parts that we have designed for their reliability, safety and suitability for your NISSAN vehicle. We are committed to providing you with quick, efficient and competitively priced service and parts.*

* May differ or not apply outside the United States, please inquire of your dealer.



About GT-R Maintenance

The GT-R is Nissan's first supercar category vehicle. The GT-R is equipped with special systems. These systems are different than those used on conventional vehicles to allow for the high performance driving characteristics of the GT-R. Your GT-R should be maintained by a GT-R certified NISSAN dealer. Special skills, knowledge and equipment are necessary to properly maintain your GT-R.

Special skill, knowledge and equipment are necessary to properly inspect and adjust the GT-R engine, transmission, suspension and brakes to maintain performance. A GT-R certified NISSAN dealer has the GT-R certified technical staff and the special equipment to properly maintain your GT-R.

Nissan recommends maintenance items that require the replacement of parts, engine oil, oil filters, and air filters should be performed by a GT-R certified dealer. Make sure the specified fluids and parts are used when the maintenance is performed. NISSAN also recommends the replacement of parts such as the brakes should be performed by a GT-R certified dealer.

For recommended and/or required GT-R lubricants and fluids, refer to Chapter 9 of your owner's manual.



GT-R Performance Optimization Services

In addition to the regular maintenance recommended by NISSAN, the GT-R requires the following inspections; **Measurement and adjustment of wheel alignment if needed** (unladen with fuel and lubricants full, including tire pressure adjustment) Note 1

- Note 1: This vehicle is equipped with a high performance suspension. As the suspension components "break-in", the vehicle's wheel alignment needs to be measured and adjusted by a GT-R certified dealer at the recommended intervals. Preventing Toe-Out: Toe-out can cause uneven tire wear or damage to areas inside the tires due to high heat. Be sure to have the wheel alignment toe-in setting checked and adjusted by your GT-R certified NISSAN dealer before any performance driving on closed circuit tracks. Obey all traffic laws when on public roads.

Toe-in specification for each wheel

Front: ≤ 0.059 in (1.5 mm)

Rear: ≤ 0.079 in (2.0 mm)

Transmission settings Note 2

- Note 2: The design of the clutch and transmission requires inspection and adjustment of the clutch and shift forks by a GT-R certified NISSAN dealer at the recommended intervals. If the transmission setting is not complete, excessive loads may be applied to the transmission and power train system parts during starting and shifting, which may result in a malfunction or damage.



As a condition of warranty, the above two inspections are required at the following intervals: 1,000 miles, 12 months, 24 months and 36 months. These inspections will be performed free of charge at a GT-R certified Nissan dealer only. All inspections and services on the above two items, performed outside the above intervals, are performed at the customer's expense. See your 2018 Nissan GT-R Warranty Information Booklet for details.

After the period of GT-R performance optimization services in the first three years, these items are included in the regular scheduled maintenance.

*Repairs and adjustments involving part replacement, etc. determined to be necessary as a result of these inspections are performed at the customer's expense.

*See your 2018 NISSAN GT-R Warranty Information Booklet for significant limitations, exclusions, and possible voiding of warranty resulting from failure to have these necessary inspections, repairs and/or adjustments performed.

EXTENDED SERVICE PLANS*



Security+Plus®

EXTENDED PROTECTION PLANS

Did you know you can drive your new GT-R for the next 8 years or 120,000 miles, almost worry-free of unexpected repair costs?

Nissan **Security+Plus** Extended Protection Plans deliver peace of mind by providing component coverage (up to 1,950 components), roadside assistance, and rental car benefits. Additionally, **Security+Plus** plans offer **Nationwide Coverage** (at GT-R-certified Nissan dealers); use **Genuine Nissan Parts** (new or, in some cases, remanufactured), employ factory-trained technicians, and protect you against the rising cost of parts and labor.

Security+Plus Extended Protection Plans can be purchased any time within your vehicle's original 3-year/36,000-mile new vehicle basic limited warranty period.

PREPAID MAINTENANCE PLANS

Security+Plus Prepaid Maintenance Plans maintain your GT-R to factory specifications by factory-trained technicians. Like our Extended Protection Plans, you'll benefit from **Nationwide Coverage and Genuine Nissan Parts** and you'll be protected against the rising costs of parts and labor. **Security+Plus** Prepaid Maintenance Plans offers one service interval and five time and mileage periods. So, it's easy to find a plan that's right for you. **Security+Plus** Prepaid Maintenance Plans can be purchased any time within the first 6 months/6,000 miles of the original vehicle sale date. Just contact your selling dealer and tell them you'd like to take advantage of one of the best maintenance plans available for your GT-R today.

* These products not available outside the United States.

GENUINE NISSAN COLLISION PARTS

Your GT-R has been manufactured using a combination of stamped steel, stamped aluminum, die-cast aluminum, and carbon reinforced components and high precision assembly jigs. If you have an accident, insist on Genuine NISSAN Collision Parts. If you want your vehicle to be restored using parts made to NISSAN's original exacting specifications, the solution is simple. Tell your insurance agent and your repair shop to use only Genuine NISSAN Collision Parts. As special skills, information and equipment are required to correctly repair the body, be sure to contact your NISSAN dealer or visit **www.NissanUSA.com** under owner information to locate a GT-R certified body shop in your area.

Many non-genuine parts may be copies made from impressions of NISSAN parts and may not match the specifications and performance standards of Genuine NISSAN Parts.

The hood on your vehicle is a good example. NISSAN designed it with hood buckling creases to help prevent the hood from penetrating the interior of your vehicle in an accident.

In some states, the law says you must be advised if non-genuine parts are used to repair your vehicle.

Replacement Panel Limited Lifetime Corrosion Warranty*

If you have your collision damage repaired using Genuine NISSAN Outer Sheet Metal Panels you don't have to worry about corrosion. That's because these panels are warranted against inside out rust-through perforation for as long as you own your NISSAN. Another reason to insist on Genuine NISSAN Collision Repair Parts.

See your participating Nissan dealer for details.

* This warranty does not apply to vehicles or parts not distributed by Nissan North America and/or sold outside the United States.

DETERMINING THE PROPER MAINTENANCE INTERVAL

Depending on your driving habits and local conditions, you should follow one of the two maintenance schedules listed below for scheduled maintenance. In addition to Schedule 1 maintenance, additional maintenance must be performed for optimum performance. Use these guidelines to determine which maintenance schedule to use:

SCHEDULE 1 (Every 6,000 miles or 6 months, whichever comes first)

Schedule 1 features 6,000-mile service intervals. Use Schedule 1 if you primarily operate your vehicle under any of these conditions:

- Repeated short trips of less than 5 miles in normal temperatures or less than 10 miles in freezing temperatures
- Stop-and-go traffic in hot weather or low-speed driving for long distances
- Driving in dusty conditions or on rough, muddy, or salt-spread roads

SCHEDULE 2 (Every 6,000 miles or 6 months, whichever comes first)

Schedule 2 features 6,000-mile service intervals; with Schedule 2 fewer maintenance items are regularly checked or replaced than with Schedule 1.

Generally, Schedule 2 applies only to highway driving in temperate conditions. Use Schedule 2 only if you primarily operate your vehicle under conditions other than those listed in Schedule 1.

EXPLANATION OF SCHEDULED MAINTENANCE ITEMS

The following descriptions are provided to give you a better understanding of the scheduled maintenance items that should be regularly checked or replaced. The maintenance log indicates at which mileage/time intervals each item requires service.

In addition to scheduled maintenance, your NISSAN requires that some items be checked during normal day-to-day operation. You can find these items listed under "General Maintenance" in Chapter 8 of your Owner's Manual.

Maintenance items and intervals marked with "*" are recommended by NISSAN for reliable vehicle operation. You are not required to perform such maintenance in order to maintain the emission warranty or manufacturer recall liability.

When applicable, additional information can be found in the "Maintenance and do-it-yourself" section in Chapter 8 of your Owner's Manual.

Emission Control System

Maintenance:

Drive Belts*

Check engine drive belts for wear, fraying or cracking. Replace any damaged drive belts.

Engine Air Filter

Replace at specified intervals. When driving for prolonged periods in dusty conditions, check/replace the filter more frequently.

Engine Coolant*

Replace engine coolant at the specified interval.

Engine Oil and Oil Filter

Replace engine oil and oil filter at the specified intervals. Check

engine oil level every 1,800 miles and add as needed. For recommended oil grade and viscosity refer to Chapter 9 in your Owner's Manual.

Engine Valve Clearance*

Inspect only if valve noise increases. Adjust valve clearance if necessary.

Evaporative Emissions Control Vapor Lines*

Check vapor lines and connections for leaks or looseness. Tighten connections or replace parts as necessary.

Fuel Filter

Maintenance-free item.

Fuel Lines*

Check the fuel hoses, piping and connections for leaks, looseness, or deterioration. Tighten connections or replace parts as necessary.

EXPLANATION OF SCHEDULED MAINTENANCE ITEMS

Throttle Chamber Deposits*

Visually inspect the throttle chamber for deposits and clean as necessary.

Spark Plugs

Replace at specified intervals. Install new plugs of the same type as originally equipped.

Chassis and Body Maintenance:

Brake Lines and Cables

Visually inspect for proper installation. Check for chafing, cracks, deterioration, and signs of leaking. Replace any deteriorated or damaged parts immediately.

Brake Pads & Rotors

Check for wear, deterioration and fluid leaks. Replace any deteriorated or damaged parts immediately. Replace all four sets of brake pads and

disc rotors at the same time to maintain maximum brake performance.

Exhaust System

Visually inspect the exhaust pipes, muffler and hangers for leaks, cracks, deterioration, and damage. Tighten connections or replace parts as necessary.

In-Cabin Microfilter

Replace at specified intervals. When driving for prolonged periods in dusty conditions, replace the filter more frequently.

Measurement and Adjustment of Wheel Alignment

Manage the wheel alignment by measuring and adjusting at specified intervals.

Propeller Shaft(s)

Check for damage, looseness, and grease leakage.

Steering Gear and Linkage, Axle and Suspension Parts, Drive Shaft Boots

Check for damage, looseness, and leakage of oil or grease. Under severe driving conditions, inspect more frequently.

Tire Rotation

Tires cannot be rotated as front tires are different size from rear tires.

Transmission Oil, Differential Oil

Replace fluid at specified intervals. Visually inspect for signs of leakage at specified intervals.

Transmission settings

To keep the best condition for transmission, this inspection allows learning of the clutch touch point and the engaged gear position and neutral position for each gear.

ADDITIONAL MAINTENANCE ITEMS

The information and specifications below apply only when engaging in performance driving.

The following information applies only if you engage in performance driving such as driving your GT-R for extended periods under the following conditions.

- Higher-RPM (approaching redline) operation
- Frequent high pedal force braking from moderate and higher speeds
- Frequent throttle activation
- Fast revving throughout the RPM range

In such cases, the following additional maintenance guidelines apply.

You should carefully read your NISSAN GT-R Warranty Information Booklet for important information concerning warranty coverage, limits, and exclusions.

We recommend that all GT-R maintenance be performed at a GT-R certified NISSAN dealer. NISSAN will only pay for NISSAN GT-R Performance Optimization Services performed at a GT-R certified NISSAN dealer.

PRECAUTIONS ON PERFORMANCE DRIVING **Checking the temperature of the coolant and oils on the multi function display**

When the temperatures of the engine coolant and oil, and the oil pressure exceed the normal range, the color of the meter on the multi function display changes to red to warn the driver. When engaging in high performance driving, switch the display to the function meter to display the temperature of the engine coolant and oil, and the oil pressure. When the color of the meter display changes to red, perform cool down driving. When the values of the temperature and pressure return to the normal range, the color of the meter display will turn back to white.

Warning temperature:

- Engine coolant temperature is 230°F (110°C) or higher: If the engine coolant temperature increases above 230°F (110°C), the color of the meter display on the multi function display changes to red to warn of a possible overheat condition and engine output is reduced.
- Engine oil temperature is 275°F (135°C) or higher: If the engine oil temperature is higher

ADDITIONAL MAINTENANCE ITEMS

than 275°F (135°C), the meter display changes to red, maximum engine speed is automatically limited to 4,000 rpm and the transmission automatically changes from the "M" position to the "A" position.

- Transmission oil temperature is 284°F (140°C) or higher: If the transmission oil temperature increases to over 284°F (140°C), the color of the meter display changes to red. However, the vehicle can continue to be driven until the temperature reaches 295°F (146°C). If the oil temperature exceeds 284°F (140°C) while driving, (the color of the meter displayed in red), change both the transmission oil and differential oil after driving because these fluids have deteriorated because of the heat.

Cool Down

Cool down the vehicle to help extend the life of the vehicle if coolant temperatures are extremely high. Drive the vehicle at 37 to 50 MPH (60 to 80 km/h), in 5th or 6th gear for 2 to 3 miles (3 to 5 km) and then stop the engine.

Refueling Precautions

WARNING: Do not attempt to top off the fuel tank after the fuel pump nozzle shuts off automatically. Continued refueling may cause fuel overflow, resulting in fuel spray and possibly a fire. The fuel tank is full at the first automatic shutoff.

To maximize vehicle performance, the fuel tank is located as low as possible to lower the vehicle center of gravity. The tank is also divided into two parts. This fuel tank design causes higher pressures inside the tank than other vehicles so fuel spillage is possible by trying to top off the fuel tank after automatic shutoff.

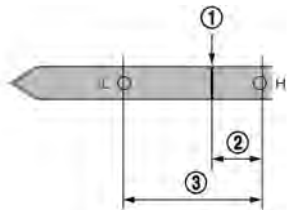
The fuel tank pressure is higher when the vehicle is hot, especially if the tank is more than half full. If the fuel cap is opened when the vehicle is hot, it may cause fuel spray and there may be a hissing noise. Open the cap slowly, releasing the pressure from the tank gradually. Also if the vehicle is refueled when the vehicle is hot, the fuel pump may automatically shut off before the tank is full. This does not indicate that there is a malfunction. Refuel slowly or refuel after the vehicle has cooled.

ADDITIONAL MAINTENANCE ITEMS

INSPECTION AND ADJUSTMENTS BEFORE PERFORMANCE DRIVING

Fluids

- * Check the engine, transmission, differential and under the vehicle for oil and coolant leaks.
- * Check the fluid levels and adjust as necessary using the specified fluid as described under the conditions listed in RECOMMENDED FLUIDS AND MAINTENANCE INTERVAL.



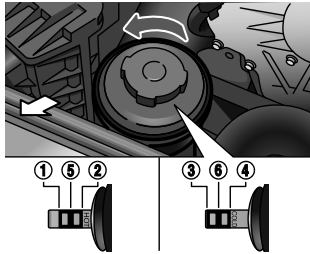
- * NISSAN recommends to adjust the engine oil level ① to be 0.39 in (10 mm) ② (16 oz, 0.5L) below the H mark on the engine oil dipstick. ③ range is 1.18 in (30 mm))

Before checking the oil level, run the engine until it reaches operating temperature and wait at least 5 minutes after turning off the engine. Make sure the oil level always remains above the L mark.

When the vehicle is delivered, the engine oil is set to "H - 0.39 in (10 mm)" for optimal high performance driving.

- * Some amount of oil is consumed by your engine under normal operating conditions, and oil consumption by itself does not necessarily indicate any malfunction. If your rate of oil consumption increases suddenly or without explanation, NISSAN recommends that you have your vehicle inspected by a GT-R certified NISSAN dealer.

ADDITIONAL MAINTENANCE ITEMS



* Adjust the power steering fluid level to the R mark ⑤ on the power steering dipstick when the fluid temperature is hot or ⑥ when the fluid temperature is cold.

Fluid temperature:

Hot: 122 to 176°F (50 to 80°C): between ① and ⑤

Cold: 32 to 86°F (0 to 30°C): between ③ and ⑥

Coolant Level and Mixture Ratio

Check the coolant level in the pressurized coolant reservoir. Adjust the level so that the fluid is the MAX marking. For the coolant, use Genuine NISSAN Long Life Coolant.

NOTICE: Do not overfill the coolant. This may increase the pressure in the cooling system and cause coolant leaks.

To maximize vehicle performance, the coolant mixture ratio should be a combination of 30% coolant/antifreeze and 70% demineralized or distilled water for maximum cooling system performance regardless of ambient temperatures.

If ambient temperatures are anticipated below 5°F (-15°C), make sure a proper mixture ratio of 50% antifreeze and 50% demineralized or distilled water mix is used.

ADDITIONAL MAINTENANCE ITEMS

Engine and Powertrain

- * Check the engine, transmission, differential and under the vehicle for oil and coolant leaks.
- * Inspect the areas surrounding the catalytic converter for heat deterioration.
- * Always perform the transmission setting. After that, adjust the clutch clearance so that the clearance is smaller than the usual clearance. Large clutch clearance increases clutch heat generation. This leads to an increase in temperature of the transmission oil. In addition, a more direct shifting feel can be obtained by adjusting the clearance to be small. Perform the adjustment again after High Performance Driving. See your GT-R certified NISSAN dealer for information.

NOTICE: Failure to have the clutch properly adjusted before performance driving may cause the transmission oil temperature to increase which may cause transmission damage.

- * Inspect and confirm the clearance between the exhaust finisher and rear bumper is more than 0.24 in (6 mm) (up/down) and more than 0.20 in (5 mm) (left/right).
- * Inspect the dust boot of the drive shaft universal joint for cracks or damage.

Suspension and Wheel Alignment

- * Check the steering and suspension system and other links for loose and/or damaged parts.
- * Measure and adjust the wheel alignment. Contact a GT-R certified NISSAN dealer to adjust the wheel alignment to the recommended setting for high performance driving.

Preventing toe-out:

Toe-out can cause uneven tire wear or damage to areas inside the tires due to high heat. Be sure to have the wheel alignment toe-in setting checked and adjusted by your GT-R certified NISSAN dealer before any performance driving on closed circuit tracks. Obey all traffic laws when on public roads.

Toe-in specification-for each wheel

Front: ≤ 0.059 in (1.5 mm)

Rear: ≤ 0.079 in (2.0 mm)

ADDITIONAL MAINTENANCE ITEMS

Wheels and Tires

- * Check tire wear and cracking.
- * Inspect the tire sidewall for damage.
- * Check the tire pressure and adjust the pressure as necessary when the tires are cold.

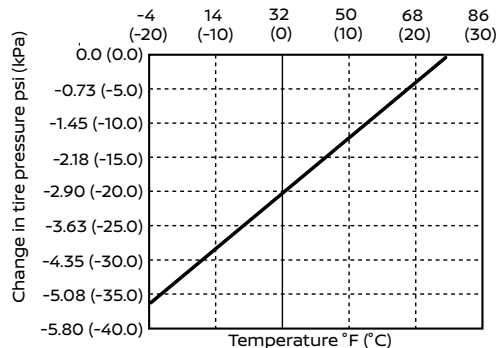
Adjust the tire pressure to the specification shown in the table, in order to make the balance of rigidity between the front and rear tires more uniform when the temperature of the tires increases due to driving at high speed or engaging in high performance driving.

Condition	Pressure PSI (kPa)
Starting to drive (Tires are cold)	Front: 30.5 (210) Rear: 29 (200)
Increasing tire pressure (Tires are hot)	Front: Not exceeding 39.2 (270) Rear: Not exceeding 37.8 (260)

The tire pressure changes depending on the outside temperature or altitude. Check the tire pressure regularly and when the climate conditions change.

* The chart below indicates how the tire pressure will decrease as outside air temperature decreases.

WARNING: Keep your tires inflated to the correct tire pressure. Driving with low tire pressure can damage some powertrain systems and affect the operation of the ABS and VDC systems. Low tire pressure may also cause tire failure and result in serious personal injury or death.



ADDITIONAL MAINTENANCE ITEMS

- * Make sure the tire valve stem cap is installed and that the valve stem is tight. When installing the cap, make sure to tighten the cap by hand. If a tool is used to tighten the cap, the cap may be damaged.

- * Make sure the wheel nuts are tight.

- * Make sure the drive shaft nuts are tight.

- * Make sure to replace the grommet seal, the valve core and the valve cap of the Tire Pressure Monitoring System (TPMS) sensor attached to the wheel every 3 years for performance driving use. Replace them every 5 years even when not engaging in performance driving. A dirty grommet seal will cause the air to leak from the tire.

- * Make sure that the nuts and valves that are attached to the TPMS sensor are tight and there is no nitrogen leak.

- * Use only a NISSAN genuine valve cap or equivalent.

- * Check wheel hub run out and that the wheel rotates smoothly without any friction. Check these with the tires removed whenever an inspection is performed with the vehicle jacked up.

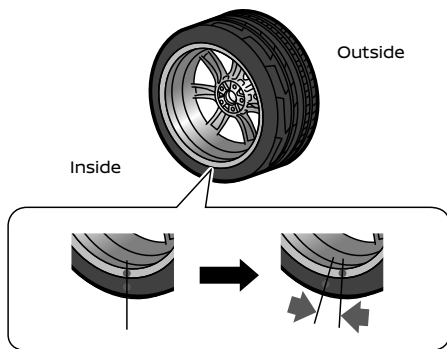
- * Secure road wheel balance weights with aluminum tape.

- * Check that the wheel nuts are not stripped.

ADDITIONAL MAINTENANCE ITEMS

* Make sure the tire has not slipped on the wheel causing the assembly to be out of balance. The reference marks on the tire and wheel should be aligned. If the reference marks are not aligned, the tire has slipped on the wheel. Have the wheels/tires rebalanced. Make sure the old reference marks are erased and new reference marks are applied to the wheel and tire. When installing new tires on the wheels, make sure new reference marks are applied to the wheels and tires.

Avoid the driving conditions listed under "Additional maintenance items" in this section for 48 hours after tires are installed on the wheels. The tire may slip on the wheel if the vehicle is driven in these conditions before 48 hours have passed. If the tire slips on the wheel, the wheel/tire assembly will be out of balance and will require rebalancing.



ADDITIONAL MAINTENANCE ITEMS

Brakes

- * Check for the heat deterioration of the brakes and parts around the brakes.
- * Remove the grease on the front brake pads completely.
- * It is recommended that you remove air from the brake system after any of the following:
 - When engaging in high performance driving for the first time after purchasing a new vehicle.
 - After replacing the brake fluid.
 - When engaging in high performance driving for a sustained period of time. It is recommended that bleeding the brake be performed when the brake calipers are hot (about 212°F (100°C)).

Brake Pad Break-in Procedure:

NISSAN recommends that a special brake pad break in procedure be performed before engaging in performance driving. Contact a GT-R certified NISSAN dealer for details.

INSPECTION AND ADJUSTMENTS AFTER PERFORMANCE DRIVING

NOTICE: At the completion of performance driving, all fluid and other adjustments should be returned to the normal fluid specifications.

Fluids

- * Check the engine, transmission, differential and under the vehicle for oil and coolant leaks.
- * Check the fluid levels and adjust as necessary using the specified fluid as described under the conditions listed in RECOMMENDED FLUIDS AND MAINTENANCE INTERVAL on the following page.
- * When changing fluids, be sure to use the specified fluids as described in the RECOMMENDED FUELS/LUBRICANTS Chart in the Technical and Consumer Information section of your owner's manual.

ADDITIONAL MAINTENANCE ITEMS

Recommended Fluids and Maintenance Interval

ITEMS	Engine Oil	
GT-R SPECIFIED FLUIDS	Mobil 1 (0W-40)*1	
MAINTENANCE INTERVAL	<ul style="list-style-type: none"> When the oil temperature stays below 230°F (110°C) while driving 	Change engine oil and engine oil filter at the same interval as Schedule 1 and 2.
	<ul style="list-style-type: none"> When the oil temperature reaches between 230°F (110°C) and 266°F (130°C) while driving 	Change engine oil and engine oil filter every 3,000 miles (5,000 km).
	<ul style="list-style-type: none"> When the oil temperature exceeds 266°F (130°C) while driving 	Change engine oil and engine oil filter immediately after stopping.
ITEMS	Transmission Oil	
GT-R SPECIFIED FLUIDS	Genuine NISSAN Transmission Oil R35 Special	
MAINTENANCE INTERVAL	<ul style="list-style-type: none"> When the oil temperature stays below 248°F (120°C) while driving 	Change transmission oil at the same interval as Schedule 1 and 2.
	<ul style="list-style-type: none"> When the oil temperature reaches between 248°F (120°C) and 284°F (140°C) while driving 	Change transmission oil every 3,000 miles (5,000 km).
	<ul style="list-style-type: none"> When the oil temperature exceeds 284°F (140°C) while driving 	Change both transmission oil and differential oil immediately after stopping. Differential oil temperature usually increases concurrently.

ADDITIONAL MAINTENANCE ITEMS

ITEMS	Differential Oil (front and rear)	
GT-R SPECIFIED FLUIDS	Differential Oil R35 COMPETITION type 2189E*2	
MAINTENANCE INTERVAL	<ul style="list-style-type: none"> When the oil temperature stays below 248°F (120°C) while driving 	Change differential oil at the same interval as Schedule 1 and 2.
	<ul style="list-style-type: none"> When the oil temperature reaches between 248°F (120°C) and 284°F (140°C) while driving 	Change differential oil every 3,000 miles (5,000 km).
	<ul style="list-style-type: none"> When the oil temperature exceeds 284°F (140°C) while driving 	Change both transmission oil and differential oil immediately after stopping. Differential oil temperature usually increases concurrently as the transmission oil temperature.
ITEMS	Brake Fluid	
GT-R SPECIFIED FLUIDS	Genuine NISSAN Brake Fluid R35 Special II*3	
MAINTENANCE INTERVAL	Change brake fluid every 3,000 miles (5,000 km).	

*1: Mobil 1 (0W-40) (100% synthetic) is the factory fill oil. The VR38 engine with its plasma-sprayed bores was developed using this oil. NISSAN cannot ensure proper engine operation and durability if other 0W-40 synthetic oil is used. If Mobil 1 (0W-40) is not available, Mobil 1 (10W-40) (100% synthetic) may be used; however, some performance loss may be noticed.

*2 The differential oil temperature cannot be displayed on the multi function display. The differential oil temperature can be checked with the transmission oil temperature since both usually increase or decrease concurrently.

*3: Genuine NISSAN Brake Fluid R35 Special II is the factory fill brake fluid. The Vehicle Dynamic Control (VDC) unit and other related parts were specially designed for this brake fluid and NISSAN cannot ensure the best performance and proper operation of the vehicle if other brake fluid is used.

ADDITIONAL MAINTENANCE ITEMS

Suspension and Wheel Alignment

- * Check the steering and suspension system and other links for loose and/or damaged parts.
- * Measure and adjust the wheel alignment. Contact a GT-R certified NISSAN dealer to adjust the wheel alignment to the recommended setting for normal driving.

Wheels and Tires

- * Check tire wear and cracking.
- * Inspect the tire sidewall for damage.
- * Check the tire pressure and adjust the pressure as necessary when the tires are cold. (See previous page's charts)
- * Check that the wheel nuts are not stripped. Check if there is no deformation on the contact surface of the wheel nuts.
- * Make sure the wheel nuts are tight.
- * Make sure the drive shaft nuts are tight.
- * Check wheel hub run out and that the wheel rotates smoothly without any friction. Check these with the tires removed whenever an inspection is performed with the vehicle jacked up.

- * Make sure the tire has not slipped on the wheel causing the assembly to be out of balance. The reference marks on the tire and wheel should be aligned. If the reference marks are not aligned, the tire has slipped on the wheel. Have the wheels/ tires rebalanced. Make sure the old reference marks are erased and new reference marks are applied to the wheel and tire. When installing new tires on wheels, make sure new reference marks are applied to the wheels and tires.
- * Make sure that the TPMS sensor installation nut and the sensor valve are tight and there is no nitrogen leak.

Brakes

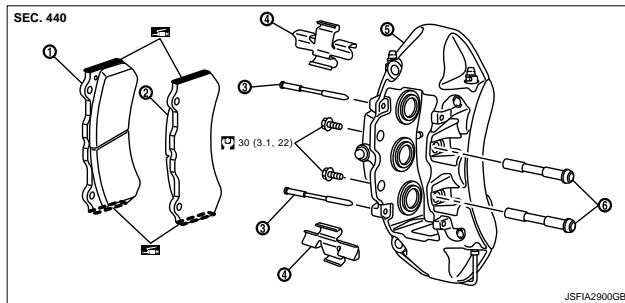
- * Check for the heat deterioration of the brakes and parts around the brakes.
- * Check the condition of the brake pads and disc rotors and replace them as necessary.
- * Apply MOLYKOTE® 7439 to the top and bottom of the front brake pads. (See next page for illustration).

ADDITIONAL MAINTENANCE ITEMS


FRONT DISC BRAKE

BRAKE PAD

BRAKE PAD: Exploded View (GT-R certified NISSAN dealer)



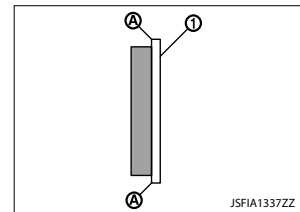
- 1. Inner pad (with pad wear sensor)
- 2. Outer pad
- 3. Pad pin
- 4. Cross spring
- 5. Caliper
- 6. Tie rod

 Apply MOLYKOTE® 7439 or equivalent.

Refer to [GI-4 "Components"](#) for the symbols in the figure.

2. Apply MOLYKOTE® 7439 or equivalent to the match face (A) of the brake pad (1).

Molykote is a registered trademark of Dow Corning Corporation.



ADDITIONAL MAINTENANCE ITEMS

Engine and Powertrain

- * Check the engine, transmission, differential and under the vehicle for oil and coolant leaks.
- * Inspect the area surrounding the catalytic converter for heat deterioration.
- * Inspect and confirm the clearance between the exhaust finisher and rear bumper is more than 0.24 in (6 mm) (up/down) and more than 0.20 in (5 mm) (left/right).
- * The clutch clearance and shift fork position may need to be adjusted.
- * Inspect the dust boot of the drive shaft universal joint for cracks or damage.
- * Check that there is no abnormal noise, vibrations or warning lights illuminated when making tight turns at slow speed (for tight corner braking phenomenon).

ADDITIONAL MAINTENANCE ITEMS

ADDITIONAL MAINTENANCE ITEMS FOR PERFORMANCE DRIVING - 2018 GT-R MAINTENANCE RECORD LIST (Inspection before and after driving)

Inspection Key:

N/A:	✓	Normal:	N	Replace:	X	Tighten:	T	Clean:	C
Adjust:	A	Repair:		Disassemble:	D	Lubricate:	L	Skip Step:	S

Fluids and Lubricants

B A (B: Before A: After)

- | | | |
|--------------------------|--------------------------|--|
| <input type="checkbox"/> | <input type="checkbox"/> | Inspect underbody for leakage and smears of oil, fluid and coolant |
| <input type="checkbox"/> | <input type="checkbox"/> | Adjust/inspect engine oil level (record temperature, document leakage and smears) |
| <input type="checkbox"/> | <input type="checkbox"/> | Adjust engine coolant level and mixture ratio in the pressurized radiator reservoir tank |
| <input type="checkbox"/> | <input type="checkbox"/> | Inspect power steering fluid level and check for leakage |
| <input type="checkbox"/> | <input type="checkbox"/> | Inspect brake fluid level |
| <input type="checkbox"/> | <input type="checkbox"/> | Inspect transmission and differential gear oil, record oil temperature and document leakage and smears |

Engine

B A

- | | | |
|--------------------------|--------------------------|---|
| <input type="checkbox"/> | <input type="checkbox"/> | Inspect area around the catalytic converter for heat deterioration |
| <input type="checkbox"/> | <input type="checkbox"/> | Inspect exhaust finishers and (only for vehicles with GT-R genuine exhaust) rear bumper clearance |
| <input type="checkbox"/> | <input type="checkbox"/> | Inspect and adjust clearance between the exhaust and it's surrounding parts |

Transmission

B A

- | | | |
|--------------------------|--------------------------|--|
| <input type="checkbox"/> | <input type="checkbox"/> | Adjust clutch clearance (clutch gear learning) |
| <input type="checkbox"/> | <input type="checkbox"/> | Inspect whether tight corner braking phenomenon does not become extremely strong |

Wheel and Tire

B A

- | | | |
|--------------------------|--------------------------|--|
| <input type="checkbox"/> | <input type="checkbox"/> | Apply aluminum tape over the wheel balance weight |
| <input type="checkbox"/> | <input type="checkbox"/> | Inspect the wheel nuts for deformation |
| <input type="checkbox"/> | <input type="checkbox"/> | Inspect the mounting point of the wheel nut for deformation |
| <input type="checkbox"/> | <input type="checkbox"/> | Inspect the wheel nut and the wheel hub lock nut for looseness |
| <input type="checkbox"/> | <input type="checkbox"/> | Tighten the wheel nut with the standard torque |
| <input type="checkbox"/> | <input type="checkbox"/> | Inspect the wheel bearing (hub) for backlash and the wheel for rotation |
| <input type="checkbox"/> | <input type="checkbox"/> | Align the reference marks on the tire and the inner wheel |
| <input type="checkbox"/> | <input type="checkbox"/> | Inspect the tire and the wheel for direction of rotation deviation (rim deviation) |
| <input type="checkbox"/> | <input type="checkbox"/> | Inspect and adjust the tire pressure |
| <input type="checkbox"/> | <input type="checkbox"/> | Inspect the air valve and nut of the tire for looseness |
| <input type="checkbox"/> | <input type="checkbox"/> | Inspect the tire for nitrogen leakage |
| <input type="checkbox"/> | <input type="checkbox"/> | Inspect the groove of the tire |
| <input type="checkbox"/> | <input type="checkbox"/> | Inspect the tire for uneven and abnormal wear |
| <input type="checkbox"/> | <input type="checkbox"/> | Inspect the tire for damage and cracks |
| <input type="checkbox"/> | <input type="checkbox"/> | Inspect the tire side wall for damage |

Driveshaft

B A

- | | | |
|--------------------------|--------------------------|---|
| <input type="checkbox"/> | <input type="checkbox"/> | Inspect driveshaft universal joint dust boots for cracks and damage |
|--------------------------|--------------------------|---|

Brake System

B A

- | | | |
|--------------------------|--------------------------|--|
| <input type="checkbox"/> | <input type="checkbox"/> | Inspect brake piping and hoses for leakages |
| <input type="checkbox"/> | <input type="checkbox"/> | Inspect brake pads for wear, color/temperature indication, damage and cracks |
| <input type="checkbox"/> | <input type="checkbox"/> | Inspect brake disc rotors for wear, damage and cracks |
| <input type="checkbox"/> | <input type="checkbox"/> | Inspect brake master cylinder and the calipers for fluid leakage |
| <input type="checkbox"/> | <input type="checkbox"/> | Bleed any air from brake fluid |
| <input type="checkbox"/> | <input type="checkbox"/> | Inspect the parts and area surrounding the brake rotors for heat deterioration |
| <input type="checkbox"/> | <input type="checkbox"/> | Remove the grease on the front brake pads |
| <input type="checkbox"/> | <input type="checkbox"/> | Apply the grease to the front brake pads |

Steering

B A

- | | | |
|--------------------------|--------------------------|---|
| <input type="checkbox"/> | <input type="checkbox"/> | Inspect rods and arms of the steering system for looseness, backlash and damage |
| <input type="checkbox"/> | <input type="checkbox"/> | Inspect steering gear box for looseness at mounting points |

Suspension

B A

- | | | |
|--------------------------|--------------------------|---|
| <input type="checkbox"/> | <input type="checkbox"/> | Inspect shock absorbers for damage and oil leakage |
| <input type="checkbox"/> | <input type="checkbox"/> | Inspect suspension for looseness at mounting points connection, backlash and damage |
| <input type="checkbox"/> | <input type="checkbox"/> | Measure and adjust wheel adjustment |

Other Maintenance Items and Replaced Parts

Customer Name:
Address:

Mileage:
GT-R Dealer Name:
Date:
Technician Name:

Memo:

ADDITIONAL MAINTENANCE ITEMS

ADDITIONAL MAINTENANCE ITEMS FOR PERFORMANCE DRIVING - 2018 GT-R MAINTENANCE RECORD LIST (Inspection before and after driving)

Inspection Key:

N/A:	<input checked="" type="checkbox"/>	Normal:	N	Replace:	X	Tighten:	T	Clean:	C
Adjust:	A	Repair:		Disassemble:	D	Lubricate:	L	Skip Step:	S

Fluids and Lubricants

- B A (B: Before A: After)
- Inspect underbody for leakage and smears of oil, fluid and coolant
- Adjust/inspect engine oil level (record temperature, document leakage and smears)
- Adjust engine coolant level and mixture ratio in the pressurized radiator reservoir tank
- Inspect power steering fluid level and check for leakage
- Inspect brake fluid level
- Inspect transmission and differential gear oil, record oil temperature and document leakage and smears

Engine

- B A
- Inspect area around the catalytic converter for heat deterioration
- Inspect exhaust finishers and (only for vehicles with GT-R genuine exhaust) rear bumper clearance
- Inspect and adjust clearance between the exhaust and it's surrounding parts

Transmission

- B A
- Adjust clutch clearance (clutch gear learning)
- Inspect whether tight corner braking phenomenon does not become extremely strong

Wheel and Tire

- B A
- Apply aluminum tape over the wheel balance weight
- Inspect the wheel nuts for deformation
- Inspect the mounting point of the wheel nut for deformation
- Inspect the wheel nut and the wheel hub lock nut for looseness
- Tighten the wheel nut with the standard torque
- Inspect the wheel bearing (hub) for backlash and the wheel for rotation
- Align the reference marks on the tire and the inner wheel
- Inspect the tire and the wheel for direction of rotation deviation (rim deviation)
- Inspect and adjust the tire pressure
- Inspect the air valve and nut of the tire for looseness
- Inspect the tire for nitrogen leakage
- Inspect the groove of the tire
- Inspect the tire for uneven and abnormal wear
- Inspect the tire for damage and cracks
- Inspect the tire side wall for damage

Driveshaft

- B A
- Inspect driveshaft universal joint dust boots for cracks and damage

Brake System

- B A
- Inspect brake piping and hoses for leakages
- Inspect brake pads for wear, color/temperature indication, damage and cracks
- Inspect brake disc rotors for wear, damage and cracks
- Inspect brake master cylinder and the callipers for fluid leakage
- Bleed any air from brake fluid
- Inspect the parts and area surrounding the brake rotors for heat deterioration
- Remove the grease on the front brake pads
- Apply the grease to the front brake pads

Steering

- B A
- Inspect rods and arms of the steering system for looseness, backlash and damage
- Inspect steering gear box for looseness at mounting points

Suspension

- B A
- Inspect shock absorbers for damage and oil leakage
- Inspect suspension for looseness at mounting points connection, backlash and damage
- Measure and adjust wheel adjustment

Other Maintenance Items and Replaced Parts

Customer Name:

Mileage:

Memo:

Address:

GT-R Dealer Name:

Date:

Technician Name:

ADDITIONAL MAINTENANCE ITEMS

ADDITIONAL MAINTENANCE ITEMS FOR PERFORMANCE DRIVING - 2018 GT-R MAINTENANCE RECORD LIST (Inspection before and after driving)

Fluids and Lubricants

B A (B: Before A: After)

- | | | |
|--------------------------|--------------------------|--|
| <input type="checkbox"/> | <input type="checkbox"/> | Inspect underbody for leakage and smears of oil, fluid and coolant |
| <input type="checkbox"/> | <input type="checkbox"/> | Adjust/inspect engine oil level (record temperature, document leakage and smears) |
| <input type="checkbox"/> | <input type="checkbox"/> | Adjust engine coolant level and mixture ratio in the pressurized radiator reservoir tank |
| <input type="checkbox"/> | <input type="checkbox"/> | Inspect power steering fluid level and check for leakage |
| <input type="checkbox"/> | <input type="checkbox"/> | Inspect brake fluid level |
| <input type="checkbox"/> | <input type="checkbox"/> | Inspect transmission and differential gear oil, record oil temperature and document leakage and smears |

Engine

B A

- | | | |
|--------------------------|--------------------------|---|
| <input type="checkbox"/> | <input type="checkbox"/> | Inspect area around the catalytic converter for heat deterioration |
| <input type="checkbox"/> | <input type="checkbox"/> | Inspect exhaust finishers and (only for vehicles with GT-R genuine exhaust) rear bumper clearance |
| <input type="checkbox"/> | <input type="checkbox"/> | Inspect and adjust clearance between the exhaust and it's surrounding parts |

Transmission

B A

- | | | |
|--------------------------|--------------------------|--|
| <input type="checkbox"/> | <input type="checkbox"/> | Adjust clutch clearance (clutch gear learning) |
| <input type="checkbox"/> | <input type="checkbox"/> | Inspect whether tight corner braking phenomenon does not become extremely strong |

Wheel and Tire

B A

- | | | |
|--------------------------|--------------------------|--|
| <input type="checkbox"/> | <input type="checkbox"/> | Apply aluminum tape over the wheel balance weight |
| <input type="checkbox"/> | <input type="checkbox"/> | Inspect the wheel nuts for deformation |
| <input type="checkbox"/> | <input type="checkbox"/> | Inspect the mounting point of the wheel nut for deformation |
| <input type="checkbox"/> | <input type="checkbox"/> | Inspect the wheel nut and the wheel hub lock nut for looseness |
| <input type="checkbox"/> | <input type="checkbox"/> | Tighten the wheel nut with the standard torque |
| <input type="checkbox"/> | <input type="checkbox"/> | Inspect the wheel bearing (hub) for backlash and the wheel for rotation |
| <input type="checkbox"/> | <input type="checkbox"/> | Align the reference marks on the tire and the inner wheel |
| <input type="checkbox"/> | <input type="checkbox"/> | Inspect the tire and the wheel for direction of rotation deviation (rim deviation) |
| <input type="checkbox"/> | <input type="checkbox"/> | Inspect and adjust the tire pressure |
| <input type="checkbox"/> | <input type="checkbox"/> | Inspect the air valve and nut of the tire for looseness |
| <input type="checkbox"/> | <input type="checkbox"/> | Inspect the tire for nitrogen leakage |
| <input type="checkbox"/> | <input type="checkbox"/> | Inspect the groove of the tire |
| <input type="checkbox"/> | <input type="checkbox"/> | Inspect the tire for uneven and abnormal wear |
| <input type="checkbox"/> | <input type="checkbox"/> | Inspect the tire for damage and cracks |
| <input type="checkbox"/> | <input type="checkbox"/> | Inspect the tire side wall for damage |

Driveshaft

B A

- | | | |
|--------------------------|--------------------------|---|
| <input type="checkbox"/> | <input type="checkbox"/> | Inspect driveshaft universal joint dust boots for cracks and damage |
|--------------------------|--------------------------|---|

Inspection Key:

N/A:	<input type="checkbox"/>	Normal:	N	Replace:	X	Tighten:	T	Clean:	C
Adjust:	A	Repair:		Disassemble:	D	Lubricate:	L	Skip Step:	S

Brake System

B A

- | | | |
|--------------------------|--------------------------|--|
| <input type="checkbox"/> | <input type="checkbox"/> | Inspect brake piping and hoses for leakages |
| <input type="checkbox"/> | <input type="checkbox"/> | Inspect brake pads for wear, color/temperature indication, damage and cracks |
| <input type="checkbox"/> | <input type="checkbox"/> | Inspect brake disc rotors for wear, damage and cracks |
| <input type="checkbox"/> | <input type="checkbox"/> | Inspect brake master cylinder and the calipers for fluid leakage |
| <input type="checkbox"/> | <input type="checkbox"/> | Bleed any air from brake fluid |
| <input type="checkbox"/> | <input type="checkbox"/> | Inspect the parts and area surrounding the brake rotors for heat deterioration |
| <input type="checkbox"/> | <input type="checkbox"/> | Remove the grease on the front brake pads |
| <input type="checkbox"/> | <input type="checkbox"/> | Apply the grease to the front brake pads |

Steering

B A

- | | | |
|--------------------------|--------------------------|---|
| <input type="checkbox"/> | <input type="checkbox"/> | Inspect rods and arms of the steering system for looseness, backlash and damage |
| <input type="checkbox"/> | <input type="checkbox"/> | Inspect steering gear box for looseness at mounting points |

Suspension

B A

- | | | |
|--------------------------|--------------------------|---|
| <input type="checkbox"/> | <input type="checkbox"/> | Inspect shock absorbers for damage and oil leakage |
| <input type="checkbox"/> | <input type="checkbox"/> | Inspect suspension for looseness at mounting points connection, backlash and damage |
| <input type="checkbox"/> | <input type="checkbox"/> | Measure and adjust wheel adjustment |

Other Maintenance Items and Replaced Parts

Customer Name:
Address:

Mileage:
GT-R Dealer Name:
Date:
Technician Name:

Memo:

ADDITIONAL MAINTENANCE ITEMS

ADDITIONAL MAINTENANCE ITEMS FOR PERFORMANCE DRIVING - 2018 GT-R MAINTENANCE RECORD LIST (Inspection before and after driving)

Fluids and Lubricants

- B A** (B: Before A: After)
- Inspect underbody for leakage and smears of oil, fluid and coolant
- Adjust/inspect engine oil level (record temperature, document leakage and smears)
- Adjust engine coolant level and mixture ratio in the pressurized radiator reservoir tank
- Inspect power steering fluid level and check for leakage
- Inspect brake fluid level
- Inspect transmission and differential gear oil, record oil temperature and document leakage and smears

Engine

- B A**
- Inspect area around the catalytic converter for heat deterioration
- Inspect exhaust finishers and (only for vehicles with GT-R genuine exhaust) rear bumper clearance
- Inspect and adjust clearance between the exhaust and it's surrounding parts

Transmission

- B A**
- Adjust clutch clearance (clutch gear learning)
- Inspect whether tight corner braking phenomenon does not become extremely strong

Wheel and Tire

- B A**
- Apply aluminum tape over the wheel balance weight
- Inspect the wheel nuts for deformation
- Inspect the mounting point of the wheel nut for deformation
- Inspect the wheel nut and the wheel hub lock nut for looseness
- Tighten the wheel nut with the standard torque
- Inspect the wheel bearing (hub) for backlash and the wheel for rotation
- Align the reference marks on the tire and the inner wheel
- Inspect the tire and the wheel for direction of rotation deviation (rim deviation)
- Inspect and adjust the tire pressure
- Inspect the air valve and nut of the tire for looseness
- Inspect the tire for nitrogen leakage
- Inspect the groove of the tire
- Inspect the tire for uneven and abnormal wear
- Inspect the tire for damage and cracks
- Inspect the tire side wall for damage

Driveshaft

- B A**
- Inspect driveshaft universal joint dust boots for cracks and damage

Inspection Key:

N/A	<input checked="" type="checkbox"/>	Normal:	N	Replace:	X	Tighten:	T	Clean:	C
Adjust:	A	Repair:		Disassemble:	D	Lubricate:	L	Skip Step:	S

Brake System

- B A**
- Inspect brake piping and hoses for leakages
- Inspect brake pads for wear, color/temperature indication, damage and cracks
- Inspect brake disc rotors for wear, damage and cracks
- Inspect brake master cylinder and the calipers for fluid leakage
- Bleed any air from brake fluid
- Inspect the parts and area surrounding the brake rotors for heat deterioration
- Remove the grease on the front brake pads
- Apply the grease to the front brake pads

Steering

- B A**
- Inspect rods and arms of the steering system for looseness, backlash and damage
- Inspect steering gear box for looseness at mounting points

Suspension

- B A**
- Inspect shock absorbers for damage and oil leakage
- Inspect suspension for looseness at mounting points connection, backlash and damage
- Measure and adjust wheel adjustment

Other Maintenance Items and Replaced Parts

Customer Name:

Mileage:

Memo:

Address:

GT-R Dealer Name:

Date:

Technician Name:

ADDITIONAL MAINTENANCE ITEMS

ADDITIONAL MAINTENANCE ITEMS FOR PERFORMANCE DRIVING - 2018 GT-R MAINTENANCE RECORD LIST (Inspection before and after driving)

Inspection Key:

N/A:	✓	Normal:	N	Replace:	X	Tighten:	T	Clean:	C
Adjust:	A	Repair:		Disassemble:	D	Lubricate:	L	Skip Step:	S

Fluids and Lubricants

B A (B: Before A: After)

- | | | |
|--------------------------|--------------------------|--|
| <input type="checkbox"/> | <input type="checkbox"/> | Inspect underbody for leakage and smears of oil, fluid and coolant |
| <input type="checkbox"/> | <input type="checkbox"/> | Adjust/inspect engine oil level (record temperature, document leakage and smears) |
| <input type="checkbox"/> | <input type="checkbox"/> | Adjust engine coolant level and mixture ratio in the pressurized radiator reservoir tank |
| <input type="checkbox"/> | <input type="checkbox"/> | Inspect power steering fluid level and check for leakage |
| <input type="checkbox"/> | <input type="checkbox"/> | Inspect brake fluid level |
| <input type="checkbox"/> | <input type="checkbox"/> | Inspect transmission and differential gear oil, record oil temperature and document leakage and smears |

Engine

B A

- | | | |
|--------------------------|--------------------------|---|
| <input type="checkbox"/> | <input type="checkbox"/> | Inspect area around the catalytic converter for heat deterioration |
| <input type="checkbox"/> | <input type="checkbox"/> | Inspect exhaust finishers and (only for vehicles with GT-R genuine exhaust) rear bumper clearance |
| <input type="checkbox"/> | <input type="checkbox"/> | Inspect and adjust clearance between the exhaust and it's surrounding parts |

Transmission

B A

- | | | |
|--------------------------|--------------------------|--|
| <input type="checkbox"/> | <input type="checkbox"/> | Adjust clutch clearance (clutch gear learning) |
| <input type="checkbox"/> | <input type="checkbox"/> | Inspect whether tight corner braking phenomenon does not become extremely strong |

Wheel and Tire

B A

- | | | |
|--------------------------|--------------------------|--|
| <input type="checkbox"/> | <input type="checkbox"/> | Apply aluminum tape over the wheel balance weight |
| <input type="checkbox"/> | <input type="checkbox"/> | Inspect the wheel nuts for deformation |
| <input type="checkbox"/> | <input type="checkbox"/> | Inspect the mounting point of the wheel nut for deformation |
| <input type="checkbox"/> | <input type="checkbox"/> | Inspect the wheel nut and the wheel hub lock nut for looseness |
| <input type="checkbox"/> | <input type="checkbox"/> | Tighten the wheel nut with the standard torque |
| <input type="checkbox"/> | <input type="checkbox"/> | Inspect the wheel bearing (hub) for backlash and the wheel for rotation |
| <input type="checkbox"/> | <input type="checkbox"/> | Align the reference marks on the tire and the inner wheel |
| <input type="checkbox"/> | <input type="checkbox"/> | Inspect the tire and the wheel for direction of rotation deviation (rim deviation) |
| <input type="checkbox"/> | <input type="checkbox"/> | Inspect and adjust the tire pressure |
| <input type="checkbox"/> | <input type="checkbox"/> | Inspect the air valve and nut of the tire for looseness |
| <input type="checkbox"/> | <input type="checkbox"/> | Inspect the tire for nitrogen leakage |
| <input type="checkbox"/> | <input type="checkbox"/> | Inspect the groove of the tire |
| <input type="checkbox"/> | <input type="checkbox"/> | Inspect the tire for uneven and abnormal wear |
| <input type="checkbox"/> | <input type="checkbox"/> | Inspect the tire for damage and cracks |
| <input type="checkbox"/> | <input type="checkbox"/> | Inspect the tire side wall for damage |

Driveshaft

B A

- | | | |
|--------------------------|--------------------------|---|
| <input type="checkbox"/> | <input type="checkbox"/> | Inspect driveshaft universal joint dust boots for cracks and damage |
|--------------------------|--------------------------|---|

Brake System

B A

- | | | |
|--------------------------|--------------------------|--|
| <input type="checkbox"/> | <input type="checkbox"/> | Inspect brake piping and hoses for leakages |
| <input type="checkbox"/> | <input type="checkbox"/> | Inspect brake pads for wear, color/temperature indication, damage and cracks |
| <input type="checkbox"/> | <input type="checkbox"/> | Inspect brake disc rotors for wear, damage and cracks |
| <input type="checkbox"/> | <input type="checkbox"/> | Inspect brake master cylinder and the calipers for fluid leakage |
| <input type="checkbox"/> | <input type="checkbox"/> | Bleed any air from brake fluid |
| <input type="checkbox"/> | <input type="checkbox"/> | Inspect the parts and area surrounding the brake rotors for heat deterioration |
| <input type="checkbox"/> | <input type="checkbox"/> | Remove the grease on the front brake pads |
| <input type="checkbox"/> | <input type="checkbox"/> | Apply the grease to the front brake pads |

Steering

B A

- | | | |
|--------------------------|--------------------------|---|
| <input type="checkbox"/> | <input type="checkbox"/> | Inspect rods and arms of the steering system for looseness, backlash and damage |
| <input type="checkbox"/> | <input type="checkbox"/> | Inspect steering gear box for looseness at mounting points |

Suspension

B A

- | | | |
|--------------------------|--------------------------|---|
| <input type="checkbox"/> | <input type="checkbox"/> | Inspect shock absorbers for damage and oil leakage |
| <input type="checkbox"/> | <input type="checkbox"/> | Inspect suspension for looseness at mounting points connection, backlash and damage |
| <input type="checkbox"/> | <input type="checkbox"/> | Measure and adjust wheel adjustment |

Other Maintenance Items and Replaced Parts

Customer Name:
Address:

Mileage:
GT-R Dealer Name:
Date:
Technician Name:

Memo:

ADDITIONAL MAINTENANCE ITEMS

ADDITIONAL MAINTENANCE ITEMS FOR PERFORMANCE DRIVING - 2018 GT-R MAINTENANCE RECORD LIST (Inspection before and after driving)

Inspection Key:

N/A:	<input checked="" type="checkbox"/>	Normal:	N	Replace:	X	Tighten:	T	Clean:	C
Adjust:	A	Repair:		Disassemble:	D	Lubricate:	L	Skip Step:	S

Fluids and Lubricants

- B A (B: Before A: After)
- Inspect underbody for leakage and smears of oil, fluid and coolant
- Adjust/inspect engine oil level (record temperature, document leakage and smears)
- Adjust engine coolant level and mixture ratio in the pressurized radiator reservoir tank
- Inspect power steering fluid level and check for leakage
- Inspect brake fluid level
- Inspect transmission and differential gear oil, record oil temperature and document leakage and smears

Engine

- B A
- Inspect area around the catalytic converter for heat deterioration
- Inspect exhaust finishers and (only for vehicles with GT-R genuine exhaust) rear bumper clearance
- Inspect and adjust clearance between the exhaust and it's surrounding parts

Transmission

- B A
- Adjust clutch clearance (clutch gear learning)
- Inspect whether tight corner braking phenomenon does not become extremely strong

Wheel and Tire

- B A
- Apply aluminum tape over the wheel balance weight
- Inspect the wheel nuts for deformation
- Inspect the mounting point of the wheel nut for deformation
- Inspect the wheel nut and the wheel hub lock nut for looseness
- Tighten the wheel nut with the standard torque
- Inspect the wheel bearing (hub) for backlash and the wheel for rotation
- Align the reference marks on the tire and the inner wheel
- Inspect the tire and the wheel for direction of rotation deviation (rim deviation)
- Inspect and adjust the tire pressure
- Inspect the air valve and nut of the tire for looseness
- Inspect the tire for nitrogen leakage
- Inspect the groove of the tire
- Inspect the tire for uneven and abnormal wear
- Inspect the tire for damage and cracks
- Inspect the tire side wall for damage

Driveshaft

- B A
- Inspect driveshaft universal joint dust boots for cracks and damage

Brake System

- B A
- Inspect brake piping and hoses for leakages
- Inspect brake pads for wear, color/temperature indication, damage and cracks
- Inspect brake disc rotors for wear, damage and cracks
- Inspect brake master cylinder and the callipers for fluid leakage
- Bleed any air from brake fluid
- Inspect the parts and area surrounding the brake rotors for heat deterioration
- Remove the grease on the front brake pads
- Apply the grease to the front brake pads

Steering

- B A
- Inspect rods and arms of the steering system for looseness, backlash and damage
- Inspect steering gear box for looseness at mounting points

Suspension

- B A
- Inspect shock absorbers for damage and oil leakage
- Inspect suspension for looseness at mounting points connection, backlash and damage
- Measure and adjust wheel adjustment

Other Maintenance Items and Replaced Parts

Customer Name:
Address:

Mileage:
GT-R Dealer Name:
Date:
Technician Name:

Memo:

ADDITIONAL MAINTENANCE ITEMS

ADDITIONAL MAINTENANCE ITEMS FOR PERFORMANCE DRIVING - 2018 GT-R MAINTENANCE RECORD LIST (Inspection before and after driving)

Fluids and Lubricants

B A (B: Before A: After)

- | | | |
|--------------------------|--------------------------|--|
| <input type="checkbox"/> | <input type="checkbox"/> | Inspect underbody for leakage and smears of oil, fluid and coolant |
| <input type="checkbox"/> | <input type="checkbox"/> | Adjust/inspect engine oil level (record temperature, document leakage and smears) |
| <input type="checkbox"/> | <input type="checkbox"/> | Adjust engine coolant level and mixture ratio in the pressurized radiator reservoir tank |
| <input type="checkbox"/> | <input type="checkbox"/> | Inspect power steering fluid level and check for leakage |
| <input type="checkbox"/> | <input type="checkbox"/> | Inspect brake fluid level |
| <input type="checkbox"/> | <input type="checkbox"/> | Inspect transmission and differential gear oil, record oil temperature and document leakage and smears |

Engine

B A

- | | | |
|--------------------------|--------------------------|---|
| <input type="checkbox"/> | <input type="checkbox"/> | Inspect area around the catalytic converter for heat deterioration |
| <input type="checkbox"/> | <input type="checkbox"/> | Inspect exhaust finishers and (only for vehicles with GT-R genuine exhaust) rear bumper clearance |
| <input type="checkbox"/> | <input type="checkbox"/> | Inspect and adjust clearance between the exhaust and it's surrounding parts |

Transmission

B A

- | | | |
|--------------------------|--------------------------|--|
| <input type="checkbox"/> | <input type="checkbox"/> | Adjust clutch clearance (clutch gear learning) |
| <input type="checkbox"/> | <input type="checkbox"/> | Inspect whether tight corner braking phenomenon does not become extremely strong |

Wheel and Tire

B A

- | | | |
|--------------------------|--------------------------|--|
| <input type="checkbox"/> | <input type="checkbox"/> | Apply aluminum tape over the wheel balance weight |
| <input type="checkbox"/> | <input type="checkbox"/> | Inspect the wheel nuts for deformation |
| <input type="checkbox"/> | <input type="checkbox"/> | Inspect the mounting point of the wheel nut for deformation |
| <input type="checkbox"/> | <input type="checkbox"/> | Inspect the wheel nut and the wheel hub lock nut for looseness |
| <input type="checkbox"/> | <input type="checkbox"/> | Tighten the wheel nut with the standard torque |
| <input type="checkbox"/> | <input type="checkbox"/> | Inspect the wheel bearing (hub) for backlash and the wheel for rotation |
| <input type="checkbox"/> | <input type="checkbox"/> | Align the reference marks on the tire and the inner wheel |
| <input type="checkbox"/> | <input type="checkbox"/> | Inspect the tire and the wheel for direction of rotation deviation (rim deviation) |
| <input type="checkbox"/> | <input type="checkbox"/> | Inspect and adjust the tire pressure |
| <input type="checkbox"/> | <input type="checkbox"/> | Inspect the air valve and nut of the tire for looseness |
| <input type="checkbox"/> | <input type="checkbox"/> | Inspect the tire for nitrogen leakage |
| <input type="checkbox"/> | <input type="checkbox"/> | Inspect the groove of the tire |
| <input type="checkbox"/> | <input type="checkbox"/> | Inspect the tire for uneven and abnormal wear |
| <input type="checkbox"/> | <input type="checkbox"/> | Inspect the tire for damage and cracks |
| <input type="checkbox"/> | <input type="checkbox"/> | Inspect the tire side wall for damage |

Driveshaft

B A

- | | | |
|--------------------------|--------------------------|---|
| <input type="checkbox"/> | <input type="checkbox"/> | Inspect driveshaft universal joint dust boots for cracks and damage |
|--------------------------|--------------------------|---|

Inspection Key:

N/A:	Normal:	Replace:	Tighten:	Clean:
Adjust:	Repair:	Disassemble:	Lubricate:	Skip Step:
A	R	D	L	S

Brake System

B A

- | | | |
|--------------------------|--------------------------|--|
| <input type="checkbox"/> | <input type="checkbox"/> | Inspect brake piping and hoses for leakages |
| <input type="checkbox"/> | <input type="checkbox"/> | Inspect brake pads for wear, color/temperature indication, damage and cracks |
| <input type="checkbox"/> | <input type="checkbox"/> | Inspect brake disc rotors for wear, damage and cracks |
| <input type="checkbox"/> | <input type="checkbox"/> | Inspect brake master cylinder and the calipers for fluid leakage |
| <input type="checkbox"/> | <input type="checkbox"/> | Bleed any air from brake fluid |
| <input type="checkbox"/> | <input type="checkbox"/> | Inspect the parts and area surrounding the brake rotors for heat deterioration |
| <input type="checkbox"/> | <input type="checkbox"/> | Remove the grease on the front brake pads |
| <input type="checkbox"/> | <input type="checkbox"/> | Apply the grease to the front brake pads |

Steering

B A

- | | | |
|--------------------------|--------------------------|---|
| <input type="checkbox"/> | <input type="checkbox"/> | Inspect rods and arms of the steering system for looseness, backlash and damage |
| <input type="checkbox"/> | <input type="checkbox"/> | Inspect steering gear box for looseness at mounting points |

Suspension

B A

- | | | |
|--------------------------|--------------------------|---|
| <input type="checkbox"/> | <input type="checkbox"/> | Inspect shock absorbers for damage and oil leakage |
| <input type="checkbox"/> | <input type="checkbox"/> | Inspect suspension for looseness at mounting points connection, backlash and damage |
| <input type="checkbox"/> | <input type="checkbox"/> | Measure and adjust wheel adjustment |

Other Maintenance Items and Replaced Parts

Customer Name:
Address:

Mileage:
GT-R Dealer Name:
Date:
Technician Name:

Memo:

ADDITIONAL MAINTENANCE ITEMS

ADDITIONAL MAINTENANCE ITEMS FOR PERFORMANCE DRIVING - 2018 GT-R MAINTENANCE RECORD LIST (Inspection before and after driving)

Inspection Key:

N/A:	<input checked="" type="checkbox"/>	Normal:	N	Replace:	X	Tighten:	T	Clean:	C
Adjust:	A	Repair:		Disassemble:	D	Lubricate:	L	Skip Step:	S

Fluids and Lubricants

- B A (B: Before A: After)
- Inspect underbody for leakage and smears of oil, fluid and coolant
- Adjust/inspect engine oil level (record temperature, document leakage and smears)
- Adjust engine coolant level and mixture ratio in the pressurized radiator reservoir tank
- Inspect power steering fluid level and check for leakage
- Inspect brake fluid level
- Inspect transmission and differential gear oil, record oil temperature and document leakage and smears

Engine

- B A
- Inspect area around the catalytic converter for heat deterioration
- Inspect exhaust finishers and (only for vehicles with GT-R genuine exhaust) rear bumper clearance
- Inspect and adjust clearance between the exhaust and it's surrounding parts

Transmission

- B A
- Adjust clutch clearance (clutch gear learning)
- Inspect whether tight corner braking phenomenon does not become extremely strong

Wheel and Tire

- B A
- Apply aluminum tape over the wheel balance weight
- Inspect the wheel nuts for deformation
- Inspect the mounting point of the wheel nut for deformation
- Inspect the wheel nut and the wheel hub lock nut for looseness
- Tighten the wheel nut with the standard torque
- Inspect the wheel bearing (hub) for backlash and the wheel for rotation
- Align the reference marks on the tire and the inner wheel
- Inspect the tire and the wheel for direction of rotation deviation (rim deviation)
- Inspect and adjust the tire pressure
- Inspect the air valve and nut of the tire for looseness
- Inspect the tire for nitrogen leakage
- Inspect the groove of the tire
- Inspect the tire for uneven and abnormal wear
- Inspect the tire for damage and cracks
- Inspect the tire side wall for damage

Driveshaft

- B A
- Inspect driveshaft universal joint dust boots for cracks and damage

Brake System

- B A
- Inspect brake piping and hoses for leakages
- Inspect brake pads for wear, color/temperature indication, damage and cracks
- Inspect brake disc rotors for wear, damage and cracks
- Inspect brake master cylinder and the callipers for fluid leakage
- Bleed any air from brake fluid
- Inspect the parts and area surrounding the brake rotors for heat deterioration
- Remove the grease on the front brake pads
- Apply the grease to the front brake pads

Steering

- B A
- Inspect rods and arms of the steering system for looseness, backlash and damage
- Inspect steering gear box for looseness at mounting points

Suspension

- B A
- Inspect shock absorbers for damage and oil leakage
- Inspect suspension for looseness at mounting points connection, backlash and damage
- Measure and adjust wheel adjustment

Other Maintenance Items and Replaced Parts

Customer Name:

Mileage:

Memo:

Address:

GT-R Dealer Name:

Date:

Technician Name:

ADDITIONAL MAINTENANCE ITEMS

ADDITIONAL MAINTENANCE ITEMS FOR PERFORMANCE DRIVING - 2018 GT-R MAINTENANCE RECORD LIST (Inspection before and after driving)

Inspection Key:

N/A:	<input checked="" type="checkbox"/>	Normal:	N	Replace:	X	Tighten:	T	Clean:	C
Adjust:	A	Repair:	D	Disassemble:	D	Lubricate:	L	Skip Step:	S

Fluids and Lubricants

B A (B: Before A: After)

- | | | |
|--------------------------|--------------------------|--|
| <input type="checkbox"/> | <input type="checkbox"/> | Inspect underbody for leakage and smears of oil, fluid and coolant |
| <input type="checkbox"/> | <input type="checkbox"/> | Adjust/inspect engine oil level (record temperature, document leakage and smears) |
| <input type="checkbox"/> | <input type="checkbox"/> | Adjust engine coolant level and mixture ratio in the pressurized radiator reservoir tank |
| <input type="checkbox"/> | <input type="checkbox"/> | Inspect power steering fluid level and check for leakage |
| <input type="checkbox"/> | <input type="checkbox"/> | Inspect brake fluid level |
| <input type="checkbox"/> | <input type="checkbox"/> | Inspect transmission and differential gear oil, record oil temperature and document leakage and smears |

Engine

B A

- | | | |
|--------------------------|--------------------------|---|
| <input type="checkbox"/> | <input type="checkbox"/> | Inspect area around the catalytic converter for heat deterioration |
| <input type="checkbox"/> | <input type="checkbox"/> | Inspect exhaust finishers and (only for vehicles with GT-R genuine exhaust) rear bumper clearance |
| <input type="checkbox"/> | <input type="checkbox"/> | Inspect and adjust clearance between the exhaust and it's surrounding parts |

Transmission

B A

- | | | |
|--------------------------|--------------------------|--|
| <input type="checkbox"/> | <input type="checkbox"/> | Adjust clutch clearance (clutch gear learning) |
| <input type="checkbox"/> | <input type="checkbox"/> | Inspect whether tight corner braking phenomenon does not become extremely strong |

Wheel and Tire

B A

- | | | |
|--------------------------|--------------------------|--|
| <input type="checkbox"/> | <input type="checkbox"/> | Apply aluminum tape over the wheel balance weight |
| <input type="checkbox"/> | <input type="checkbox"/> | Inspect the wheel nuts for deformation |
| <input type="checkbox"/> | <input type="checkbox"/> | Inspect the mounting point of the wheel nut for deformation |
| <input type="checkbox"/> | <input type="checkbox"/> | Inspect the wheel nut and the wheel hub lock nut for looseness |
| <input type="checkbox"/> | <input type="checkbox"/> | Tighten the wheel nut with the standard torque |
| <input type="checkbox"/> | <input type="checkbox"/> | Inspect the wheel bearing (hub) for backlash and the wheel for rotation |
| <input type="checkbox"/> | <input type="checkbox"/> | Align the reference marks on the tire and the inner wheel |
| <input type="checkbox"/> | <input type="checkbox"/> | Inspect the tire and the wheel for direction of rotation deviation (rim deviation) |
| <input type="checkbox"/> | <input type="checkbox"/> | Inspect and adjust the tire pressure |
| <input type="checkbox"/> | <input type="checkbox"/> | Inspect the air valve and nut of the tire for looseness |
| <input type="checkbox"/> | <input type="checkbox"/> | Inspect the tire for nitrogen leakage |
| <input type="checkbox"/> | <input type="checkbox"/> | Inspect the groove of the tire |
| <input type="checkbox"/> | <input type="checkbox"/> | Inspect the tire for uneven and abnormal wear |
| <input type="checkbox"/> | <input type="checkbox"/> | Inspect the tire for damage and cracks |
| <input type="checkbox"/> | <input type="checkbox"/> | Inspect the tire side wall for damage |

Driveshaft

B A

- | | | |
|--------------------------|--------------------------|---|
| <input type="checkbox"/> | <input type="checkbox"/> | Inspect driveshaft universal joint dust boots for cracks and damage |
|--------------------------|--------------------------|---|

Brake System

B A

- | | | |
|--------------------------|--------------------------|--|
| <input type="checkbox"/> | <input type="checkbox"/> | Inspect brake piping and hoses for leakages |
| <input type="checkbox"/> | <input type="checkbox"/> | Inspect brake pads for wear, color/temperature indication, damage and cracks |
| <input type="checkbox"/> | <input type="checkbox"/> | Inspect brake disc rotors for wear, damage and cracks |
| <input type="checkbox"/> | <input type="checkbox"/> | Inspect brake master cylinder and the calipers for fluid leakage |
| <input type="checkbox"/> | <input type="checkbox"/> | Bleed any air from brake fluid |
| <input type="checkbox"/> | <input type="checkbox"/> | Inspect the parts and area surrounding the brake rotors for heat deterioration |
| <input type="checkbox"/> | <input type="checkbox"/> | Remove the grease on the front brake pads |
| <input type="checkbox"/> | <input type="checkbox"/> | Apply the grease to the front brake pads |

Steering

B A

- | | | |
|--------------------------|--------------------------|---|
| <input type="checkbox"/> | <input type="checkbox"/> | Inspect rods and arms of the steering system for looseness, backlash and damage |
| <input type="checkbox"/> | <input type="checkbox"/> | Inspect steering gear box for looseness at mounting points |

Suspension

B A

- | | | |
|--------------------------|--------------------------|---|
| <input type="checkbox"/> | <input type="checkbox"/> | Inspect shock absorbers for damage and oil leakage |
| <input type="checkbox"/> | <input type="checkbox"/> | Inspect suspension for looseness at mounting points connection, backlash and damage |
| <input type="checkbox"/> | <input type="checkbox"/> | Measure and adjust wheel adjustment |

Other Maintenance Items and Replaced Parts

Customer Name:
Address:

Mileage:
GT-R Dealer Name:
Date:
Technician Name:

Memo:

ADDITIONAL MAINTENANCE ITEMS

ADDITIONAL MAINTENANCE ITEMS FOR PERFORMANCE DRIVING - 2018 GT-R MAINTENANCE RECORD LIST (Inspection before and after driving)

Fluids and Lubricants

- B A** (B: Before A: After)
- Inspect underbody for leakage and smears of oil, fluid and coolant
- Adjust/inspect engine oil level (record temperature, document leakage and smears)
- Adjust engine coolant level and mixture ratio in the pressurized radiator reservoir tank
- Inspect power steering fluid level and check for leakage
- Inspect brake fluid level
- Inspect transmission and differential gear oil, record oil temperature and document leakage and smears

Engine

- B A**
- Inspect area around the catalytic converter for heat deterioration
- Inspect exhaust finishers and (only for vehicles with GT-R genuine exhaust) rear bumper clearance
- Inspect and adjust clearance between the exhaust and it's surrounding parts

Transmission

- B A**
- Adjust clutch clearance (clutch gear learning)
- Inspect whether tight corner braking phenomenon does not become extremely strong

Wheel and Tire

- B A**
- Apply aluminum tape over the wheel balance weight
- Inspect the wheel nuts for deformation
- Inspect the mounting point of the wheel nut for deformation
- Inspect the wheel nut and the wheel hub lock nut for looseness
- Tighten the wheel nut with the standard torque
- Inspect the wheel bearing (hub) for backlash and the wheel for rotation
- Align the reference marks on the tire and the inner wheel
- Inspect the tire and the wheel for direction of rotation deviation (rim deviation)
- Inspect and adjust the tire pressure
- Inspect the air valve and nut of the tire for looseness
- Inspect the tire for nitrogen leakage
- Inspect the groove of the tire
- Inspect the tire for uneven and abnormal wear
- Inspect the tire for damage and cracks
- Inspect the tire side wall for damage

Driveshaft

- B A**
- Inspect driveshaft universal joint dust boots for cracks and damage

Inspection Key:

N/A	<input checked="" type="checkbox"/>	Normal	N	Replace	X	Tighten	T	Clean	C
Adjust	A	Repair		Disassemble	D	Lubricate	L	Skip Step	S

Brake System

- B A**
- Inspect brake piping and hoses for leakages
- Inspect brake pads for wear, color/temperature indication, damage and cracks
- Inspect brake disc rotors for wear, damage and cracks
- Inspect brake master cylinder and the callipers for fluid leakage
- Bleed any air from brake fluid
- Inspect the parts and area surrounding the brake rotors for heat deterioration
- Remove the grease on the front brake pads
- Apply the grease to the front brake pads

Steering

- B A**
- Inspect rods and arms of the steering system for looseness, backlash and damage
- Inspect steering gear box for looseness at mounting points

Suspension

- B A**
- Inspect shock absorbers for damage and oil leakage
- Inspect suspension for looseness at mounting points connection, backlash and damage
- Measure and adjust wheel adjustment

Other Maintenance Items and Replaced Parts

Customer Name:

Address:

Mileage:

GT-R Dealer Name:

Date:

Technician Name:

Memo:

ADDITIONAL MAINTENANCE ITEMS

ADDITIONAL MAINTENANCE ITEMS FOR PERFORMANCE DRIVING - 2018 GT-R MAINTENANCE RECORD LIST (Inspection before and after driving)

Inspection Key:

N/A:	Normal:	Replace:	Tighten:	Clean:
Adjust:	Repair:	Disassemble:	Lubricate:	Skip Step:
A		D	L	S

Fluids and Lubricants

B A (B: Before A: After)

- | | | |
|--------------------------|--------------------------|--|
| <input type="checkbox"/> | <input type="checkbox"/> | Inspect underbody for leakage and smears of oil, fluid and coolant |
| <input type="checkbox"/> | <input type="checkbox"/> | Adjust/inspect engine oil level (record temperature, document leakage and smears) |
| <input type="checkbox"/> | <input type="checkbox"/> | Adjust engine coolant level and mixture ratio in the pressurized radiator reservoir tank |
| <input type="checkbox"/> | <input type="checkbox"/> | Inspect power steering fluid level and check for leakage |
| <input type="checkbox"/> | <input type="checkbox"/> | Inspect brake fluid level |
| <input type="checkbox"/> | <input type="checkbox"/> | Inspect transmission and differential gear oil, record oil temperature and document leakage and smears |

Engine

B A

- | | | |
|--------------------------|--------------------------|---|
| <input type="checkbox"/> | <input type="checkbox"/> | Inspect area around the catalytic converter for heat deterioration |
| <input type="checkbox"/> | <input type="checkbox"/> | Inspect exhaust finishers and (only for vehicles with GT-R genuine exhaust) rear bumper clearance |
| <input type="checkbox"/> | <input type="checkbox"/> | Inspect and adjust clearance between the exhaust and it's surrounding parts |

Transmission

B A

- | | | |
|--------------------------|--------------------------|--|
| <input type="checkbox"/> | <input type="checkbox"/> | Adjust clutch clearance (clutch gear learning) |
| <input type="checkbox"/> | <input type="checkbox"/> | Inspect whether tight corner braking phenomenon does not become extremely strong |

Wheel and Tire

B A

- | | | |
|--------------------------|--------------------------|--|
| <input type="checkbox"/> | <input type="checkbox"/> | Apply aluminum tape over the wheel balance weight |
| <input type="checkbox"/> | <input type="checkbox"/> | Inspect the wheel nuts for deformation |
| <input type="checkbox"/> | <input type="checkbox"/> | Inspect the mounting point of the wheel nut for deformation |
| <input type="checkbox"/> | <input type="checkbox"/> | Inspect the wheel nut and the wheel hub lock nut for looseness |
| <input type="checkbox"/> | <input type="checkbox"/> | Tighten the wheel nut with the standard torque |
| <input type="checkbox"/> | <input type="checkbox"/> | Inspect the wheel bearing (hub) for backlash and the wheel for rotation |
| <input type="checkbox"/> | <input type="checkbox"/> | Align the reference marks on the tire and the inner wheel |
| <input type="checkbox"/> | <input type="checkbox"/> | Inspect the tire and the wheel for direction of rotation deviation (rim deviation) |
| <input type="checkbox"/> | <input type="checkbox"/> | Inspect and adjust the tire pressure |
| <input type="checkbox"/> | <input type="checkbox"/> | Inspect the air valve and nut of the tire for looseness |
| <input type="checkbox"/> | <input type="checkbox"/> | Inspect the tire for nitrogen leakage |
| <input type="checkbox"/> | <input type="checkbox"/> | Inspect the groove of the tire |
| <input type="checkbox"/> | <input type="checkbox"/> | Inspect the tire for uneven and abnormal wear |
| <input type="checkbox"/> | <input type="checkbox"/> | Inspect the tire for damage and cracks |
| <input type="checkbox"/> | <input type="checkbox"/> | Inspect the tire side wall for damage |

Driveshaft

B A

- | | | |
|--------------------------|--------------------------|---|
| <input type="checkbox"/> | <input type="checkbox"/> | Inspect driveshaft universal joint dust boots for cracks and damage |
|--------------------------|--------------------------|---|

Brake System

B A

- | | | |
|--------------------------|--------------------------|--|
| <input type="checkbox"/> | <input type="checkbox"/> | Inspect brake piping and hoses for leakages |
| <input type="checkbox"/> | <input type="checkbox"/> | Inspect brake pads for wear, color/temperature indication, damage and cracks |
| <input type="checkbox"/> | <input type="checkbox"/> | Inspect brake disc rotors for wear, damage and cracks |
| <input type="checkbox"/> | <input type="checkbox"/> | Inspect brake master cylinder and the calipers for fluid leakage |
| <input type="checkbox"/> | <input type="checkbox"/> | Bleed any air from brake fluid |
| <input type="checkbox"/> | <input type="checkbox"/> | Inspect the parts and area surrounding the brake rotors for heat deterioration |
| <input type="checkbox"/> | <input type="checkbox"/> | Remove the grease on the front brake pads |
| <input type="checkbox"/> | <input type="checkbox"/> | Apply the grease to the front brake pads |

Steering

B A

- | | | |
|--------------------------|--------------------------|---|
| <input type="checkbox"/> | <input type="checkbox"/> | Inspect rods and arms of the steering system for looseness, backlash and damage |
| <input type="checkbox"/> | <input type="checkbox"/> | Inspect steering gear box for looseness at mounting points |

Suspension

B A

- | | | |
|--------------------------|--------------------------|---|
| <input type="checkbox"/> | <input type="checkbox"/> | Inspect shock absorbers for damage and oil leakage |
| <input type="checkbox"/> | <input type="checkbox"/> | Inspect suspension for looseness at mounting points connection, backlash and damage |
| <input type="checkbox"/> | <input type="checkbox"/> | Measure and adjust wheel adjustment |

Other Maintenance Items and Replaced Parts

Customer Name:
Address:

Mileage:
GT-R Dealer Name:
Date:
Technician Name:

Memo:

ADDITIONAL MAINTENANCE ITEMS

ADDITIONAL MAINTENANCE ITEMS FOR PERFORMANCE DRIVING - 2018 GT-R MAINTENANCE RECORD LIST (Inspection before and after driving)

Inspection Key:

N/A:	<input checked="" type="checkbox"/>	Normal:	N	Replace:	X	Tighten:	T	Clean:	C
Adjust:	A	Repair:		Disassemble:	D	Lubricate:	L	Skip Step:	S

Fluids and Lubricants

- B A (B: Before A: After)
- Inspect underbody for leakage and smears of oil, fluid and coolant
- Adjust/inspect engine oil level (record temperature, document leakage and smears)
- Adjust engine coolant level and mixture ratio in the pressurized radiator reservoir tank
- Inspect power steering fluid level and check for leakage
- Inspect brake fluid level
- Inspect transmission and differential gear oil, record oil temperature and document leakage and smears

Engine

- B A
- Inspect area around the catalytic converter for heat deterioration
- Inspect exhaust finishers and (only for vehicles with GT-R genuine exhaust) rear bumper clearance
- Inspect and adjust clearance between the exhaust and it's surrounding parts

Transmission

- B A
- Adjust clutch clearance (clutch gear learning)
- Inspect whether tight corner braking phenomenon does not become extremely strong

Wheel and Tire

- B A
- Apply aluminum tape over the wheel balance weight
- Inspect the wheel nuts for deformation
- Inspect the mounting point of the wheel nut for deformation
- Inspect the wheel nut and the wheel hub lock nut for looseness
- Tighten the wheel nut with the standard torque
- Inspect the wheel bearing (hub) for backlash and the wheel for rotation
- Align the reference marks on the tire and the inner wheel
- Inspect the tire and the wheel for direction of rotation deviation (rim deviation)
- Inspect and adjust the tire pressure
- Inspect the air valve and nut of the tire for looseness
- Inspect the tire for nitrogen leakage
- Inspect the groove of the tire
- Inspect the tire for uneven and abnormal wear
- Inspect the tire for damage and cracks
- Inspect the tire side wall for damage

Driveshaft

- B A
- Inspect driveshaft universal joint dust boots for cracks and damage

Brake System

- B A
- Inspect brake piping and hoses for leakages
- Inspect brake pads for wear, color/temperature indication, damage and cracks
- Inspect brake disc rotors for wear, damage and cracks
- Inspect brake master cylinder and the callipers for fluid leakage
- Bleed any air from brake fluid
- Inspect the parts and area surrounding the brake rotors for heat deterioration
- Remove the grease on the front brake pads
- Apply the grease to the front brake pads

Steering

- B A
- Inspect rods and arms of the steering system for looseness, backlash and damage
- Inspect steering gear box for looseness at mounting points

Suspension

- B A
- Inspect shock absorbers for damage and oil leakage
- Inspect suspension for looseness at mounting points connection, backlash and damage
- Measure and adjust wheel adjustment

Other Maintenance Items and Replaced Parts

Customer Name:

Mileage:

Memo:

Address:

GT-R Dealer Name:

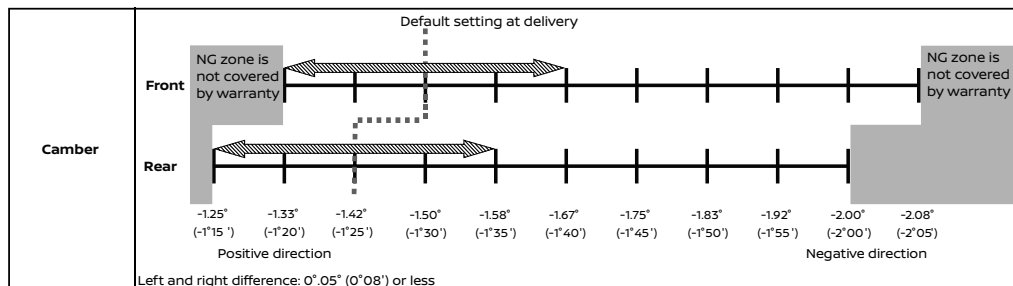
Date:

Technician Name:

SETTING GUIDE OF WHEEL ALIGNMENT DEPENDING ON THE CUSTOMER'S DRIVING

Except For NISMO and Track edition - Engineered by NISMO

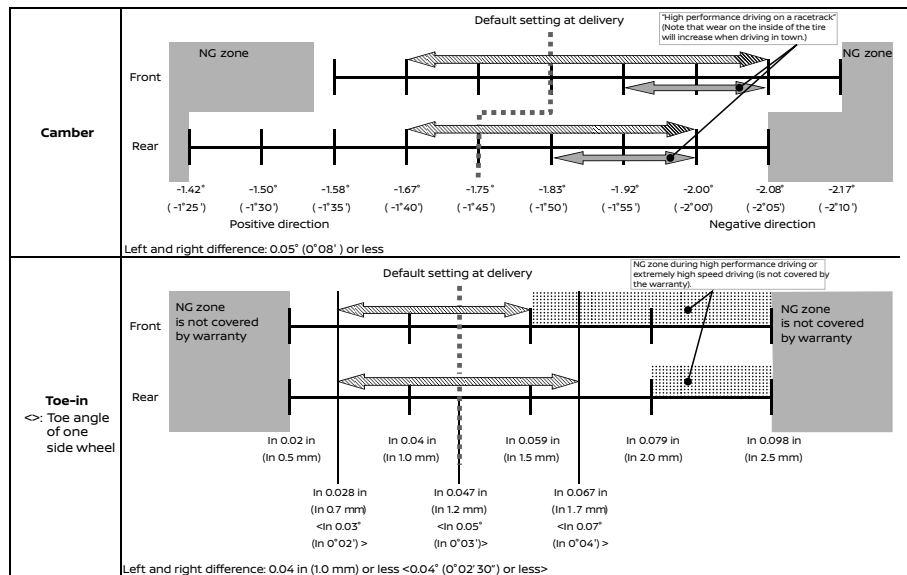
The wheel alignment can be adjusted according to the customer's needs. Contact a GT-R certified NISSAN dealer for further details.



- Toe-out can cause uneven tire wear or damage to areas inside the tires due to high heat. Be sure to have the wheel alignment toe-in setting checked and adjusted by your GT-R certified NISSAN dealer.
- The toe changes, depending on vehicle attitude changes or the permanent set of bushings. Accordingly, the state of the front wheels changes to toe-out and the rear wheels, toe in.
- For the above reasons, be sure to adjust to toe-in when engaging in high performance driving on a racetrack. (Toe-out is not covered by the warranty.)

SETTING GUIDE OF WHEEL ALIGNMENT DEPENDING ON THE CUSTOMER'S DRIVING

For NISMO and Track edition - Engineered by NISMO



• Toe-out can cause uneven tire wear or damage to areas inside the tires due to high heat. Be sure to have the wheel alignment toe-in setting checked and adjusted by your GT-R certified NISSAN dealer before any performance driving on closed circuit tracks. Obey all traffic laws when on public roads.

Toe in specification

Front: ≤ 0.059 in (1.5 mm)

Rear: ≤ 0.079 in (2.0 mm)

• The toe changes, depending on vehicle attitude changes or the permanent set of bushings.

• For the above reasons, be sure to adjust to toe-in when engaging in high performance driving on a racetrack. (Toe-out is not covered by the warranty.)

TIRE REPLACEMENT RECORD

The GT-R uses specially designed run-flat tires and matching road wheels. Use of these specially developed tires and wheels provides the greatest potential for maximum performance.

* When you replace the GT-R tires, it is recommended that you replace all the tires at the same time.

* The GT-R uses specially designed run-flat tires which feature an extremely rigid side wall. Special techniques and equipment are therefore required when replacing these tires. NISSAN recommends that tire replacement be performed at a GT-R certified NISSAN dealer.

Date		Mileage at replacement		Part number of replacement tire		Front							
		miles				Rear							
Tire pressure (nitrogen filling)				Installed balance weight (g) / Residual unbalance weight (g)									
Left	Front	kPa	Right	Front	kPa	Left	Front	g/	g	Right	Front	g/	g
	Rear	kPa		Rear	kPa		Rear	g/	g		Rear	g/	g
NHPC name or signature													

Date		Mileage at replacement		Part number of replacement tire		Front							
		miles				Rear							
Tire pressure (nitrogen filling)				Installed balance weight (g) / Residual unbalance weight (g)									
Left	Front	kPa	Right	Front	kPa	Left	Front	g/	g	Right	Front	g/	g
	Rear	kPa		Rear	kPa		Rear	g/	g		Rear	g/	g
NHPC name or signature													

Date		Mileage at replacement		Part number of replacement tire		Front							
		miles				Rear							
Tire pressure (nitrogen filling)				Installed balance weight (g) / Residual unbalance weight (g)									
Left	Front	kPa	Right	Front	kPa	Left	Front	g/	g	Right	Front	g/	g
	Rear	kPa		Rear	kPa		Rear	g/	g		Rear	g/	g
NHPC name or signature													

Date		Mileage at replacement		Part number of replacement tire		Front							
		miles				Rear							
Tire pressure (nitrogen filling)				Installed balance weight (g) / Residual unbalance weight (g)									
Left	Front	kPa	Right	Front	kPa	Left	Front	g/	g	Right	Front	g/	g
	Rear	kPa		Rear	kPa		Rear	g/	g		Rear	g/	g
NHPC name or signature													

TIRE REPLACEMENT RECORD

Date		Mileage at replacement		Part number of replacement tire	Front		Rear	
		miles			Front		Rear	
Tire pressure (nitrogen filling)				Installed balance weight (g) / Residual unbalance weight (g)				
Left	Front	kPa	Right	Front	kPa	Left	Front	g/ g
	Rear	kPa	Rear	kPa	Rear		g/ g	Rear
NHPC name or signature								

Date		Mileage at replacement		Part number of replacement tire	Front		Rear	
		miles			Front		Rear	
Tire pressure (nitrogen filling)				Installed balance weight (g) / Residual unbalance weight (g)				
Left	Front	kPa	Right	Front	kPa	Left	Front	g/ g
	Rear	kPa	Rear	kPa	Rear		g/ g	Rear
NHPC name or signature								

Date		Mileage at replacement		Part number of replacement tire	Front		Rear	
		miles			Front		Rear	
Tire pressure (nitrogen filling)				Installed balance weight (g) / Residual unbalance weight (g)				
Left	Front	kPa	Right	Front	kPa	Left	Front	g/ g
	Rear	kPa	Rear	kPa	Rear		g/ g	Rear
NHPC name or signature								

Date		Mileage at replacement		Part number of replacement tire	Front		Rear	
		miles			Front		Rear	
Tire pressure (nitrogen filling)				Installed balance weight (g) / Residual unbalance weight (g)				
Left	Front	kPa	Right	Front	kPa	Left	Front	g/ g
	Rear	kPa	Rear	kPa	Rear		g/ g	Rear
NHPC name or signature								

Date		Mileage at replacement		Part number of replacement tire	Front		Rear	
		miles			Front		Rear	
Tire pressure (nitrogen filling)				Installed balance weight (g) / Residual unbalance weight (g)				
Left	Front	kPa	Right	Front	kPa	Left	Front	g/ g
	Rear	kPa	Rear	kPa	Rear		g/ g	Rear
NHPC name or signature								

Date		Mileage at replacement		Part number of replacement tire	Front		Rear	
		miles			Front		Rear	
Tire pressure (nitrogen filling)				Installed balance weight (g) / Residual unbalance weight (g)				
Left	Front	kPa	Right	Front	kPa	Left	Front	g/ g
	Rear	kPa	Rear	kPa	Rear		g/ g	Rear
NHPC name or signature								

TRANSMISSION ASSEMBLY/PARTS REPLACEMENT RECORD

When replacing the transmission assembly, be sure to record the new serial number in the space provided.

- When replacing the transmission assembly

Transmission Serial No.	Dealer name or signature
<input type="text"/> <input type="text"/> <input type="text"/> <input type="text"/> <input type="text"/> <input type="text"/> <input type="text"/> <input type="text"/> <input type="text"/> <input type="text"/> <input type="text"/> <input type="text"/> <input type="text"/>	
Date:	
Mileage at replacement:	
	Miles

Transmission Serial No.	Dealer name or signature
<input type="text"/> <input type="text"/> <input type="text"/> <input type="text"/> <input type="text"/> <input type="text"/> <input type="text"/> <input type="text"/> <input type="text"/> <input type="text"/> <input type="text"/> <input type="text"/> <input type="text"/>	
Date:	
Mileage at replacement:	
	Miles

Transmission Serial No.	Dealer name or signature
<input type="text"/> <input type="text"/> <input type="text"/> <input type="text"/> <input type="text"/> <input type="text"/> <input type="text"/> <input type="text"/> <input type="text"/> <input type="text"/> <input type="text"/> <input type="text"/> <input type="text"/>	
Date:	
Mileage at replacement:	
	Miles

Transmission Serial No.	Dealer name or signature
<input type="text"/> <input type="text"/> <input type="text"/> <input type="text"/> <input type="text"/> <input type="text"/> <input type="text"/> <input type="text"/> <input type="text"/> <input type="text"/> <input type="text"/> <input type="text"/> <input type="text"/>	
Date:	
Mileage at replacement:	
	Miles

TRANSMISSION ASSEMBLY/PARTS REPLACEMENT RECORD

- When replacing the transmission parts

Transmission Serial No.

Date:
Replacement parts and Serial No.
 Clutch pack
Mileage at replacement: Miles
 Front control module
Dealer name or signature
 Actuator control module

Transmission Serial No.

Date:
Replacement parts and Serial No.
 Clutch pack
Mileage at replacement: Miles
 Front control module
Dealer name or signature
 Actuator control module

Transmission Serial No.

Date:
Replacement parts and Serial No.
 Clutch pack
Mileage at replacement: Miles
 Front control module
Dealer name or signature
 Actuator control module

MAINTENANCE LOG AND RECORDS



The following Maintenance Log has been compiled by NISSAN to assist you in performing the recommended maintenance services and keeping appropriate records of services performed. The maintenance log is composed of the log for GT-R special inspections and the log for scheduled maintenance. Along with the related repair invoices, receipts, and other such records, a properly documented maintenance history could enhance the value of your vehicle should you ever wish to sell it. The services listed represent the minimal NISSAN recommended requirements for each time/mileage interval, up to 96,000 miles / 96 months.

Abbreviations

[]: Performed based on the mileage only.

<>: Performed based on the number of months only.

GT-R Complimentary Performance Optimization Services*

*Necessary repairs discovered during inspections may incur service charges.

1,000 MILES

- Inspect the following:
 - Measurement and adjustment (if needed) of wheel alignment
 - Transmission settings

* Refer to the appropriate Schedule 1 or Schedule 2, recommended maintenance schedule for additional maintenance items.

GT-R Performance Optimization Service Log Record of Service Details

Measurement and Adjustment of wheel alignment

Measured Values

FR	Total Toe-In			in/mm
		Camber	LH	Deg/min (Dec/Deg)
	RH		Deg/min (Dec/Deg)	
	Caster	LH	Deg/min (Dec/Deg)	
RH		Deg/min (Dec/Deg)		
RR	Total Toe-In			in/mm
	Camber	LH	Deg/min (Dec/Deg)	
		RH	Deg/min (Dec/Deg)	

Adjusted Values

FR	Total Toe-In			in/mm
		Camber	LH	Deg/min (Dec/Deg)
	RH		Deg/min (Dec/Deg)	
	Caster	LH	Deg/min (Dec/Deg)	
RH		Deg/min (Dec/Deg)		
RR	Total Toe-In			in/mm
	Camber	LH	Deg/min (Dec/Deg)	
		RH	Deg/min (Dec/Deg)	

Transmission Settings

Measured Values

Engine Speed	rpm
Trans. Oil Temp.	°F (°C)

Status of Transmission Setting

Clutch Gear Learning	Previous Learned Value
	Current Learned Value

*Circle the settings as delivered to the Customer

Clutch A touch point setting value	
Clutch B touch point setting value	
Adjust clutch A capacity setting value	
Adjust clutch B capacity setting value	

Customer Name	
Address	

Mileage	Miles/km
Dealer Name	
Date	
Technician Name	

Notes:

GT-R Complimentary Performance Optimization Services*

*Necessary repairs discovered during inspections may incur service charges.

12 MONTHS

- Inspect the following:
 - Measurement and adjustment (if needed) of wheel alignment
 - Transmission settings

* Refer to the appropriate Schedule 1 or Schedule 2, recommended maintenance schedule for additional maintenance items.

GT-R Performance Optimization Service Log Record of Service Details

Measurement and Adjustment of wheel alignment

Measured Values

FR	Total Toe-In			in/mm
		Camber	LH	Deg/min (Dec/Deg)
	RH		Deg/min (Dec/Deg)	
	Caster	LH	Deg/min (Dec/Deg)	
RH		Deg/min (Dec/Deg)		
RR	Total Toe-In			in/mm
	Camber	LH	Deg/min (Dec/Deg)	
		RH	Deg/min (Dec/Deg)	

Adjusted Values

FR	Total Toe-In			in/mm
		Camber	LH	Deg/min (Dec/Deg)
	RH		Deg/min (Dec/Deg)	
	Caster	LH	Deg/min (Dec/Deg)	
RH		Deg/min (Dec/Deg)		
RR	Total Toe-In			in/mm
	Camber	LH	Deg/min (Dec/Deg)	
		RH	Deg/min (Dec/Deg)	

Transmission Settings

Measured Values

Engine Speed	rpm
Trans. Oil Temp.	°F (°C)

Status of Transmission Setting

Clutch Gear Learning	Previous Learned Value
	Current Learned Value

*Circle the settings as delivered to the Customer

Clutch A touch point setting value	
Clutch B touch point setting value	
Adjust clutch A capacity setting value	
Adjust clutch B capacity setting value	

Customer Name	
Address	

Mileage	Miles/km
Dealer Name	
Date	
Technician Name	

Notes:

GT-R Complimentary Performance Optimization Services*

*Necessary repairs discovered during inspections may incur service charges.

24 MONTHS

- Inspect the following:
 - Measurement and adjustment (if needed) of wheel alignment
 - Transmission settings

* Refer to the appropriate Schedule 1 or Schedule 2, recommended maintenance schedule for additional maintenance items.

GT-R Performance Optimization Service Log Record of Service Details

Measurement and Adjustment of wheel alignment

Measured Values

FR	Total Toe-In		in/mm
	Camber	LH	Deg/min (Dec/Deg)
		RH	Deg/min (Dec/Deg)
	Caster	LH	Deg/min (Dec/Deg)
RH		Deg/min (Dec/Deg)	
RR	Total Toe-In		in/mm
	Camber	LH	Deg/min (Dec/Deg)
		RH	Deg/min (Dec/Deg)

Adjusted Values

FR	Total Toe-In		in/mm
	Camber	LH	Deg/min (Dec/Deg)
		RH	Deg/min (Dec/Deg)
	Caster	LH	Deg/min (Dec/Deg)
RH		Deg/min (Dec/Deg)	
RR	Total Toe-In		in/mm
	Camber	LH	Deg/min (Dec/Deg)
		RH	Deg/min (Dec/Deg)

Transmission Settings

Measured Values

Engine Speed	rpm
Trans. Oil Temp.	°F (°C)

Status of Transmission Setting

Clutch Gear Learning	Previous Learned Value
	Current Learned Value

*Circle the settings as delivered to the Customer

Clutch A touch point setting value	
Clutch B touch point setting value	
Adjust clutch A capacity setting value	
Adjust clutch B capacity setting value	

Customer Name	
Address	

Mileage	Miles/km
Dealer Name	
Date	
Technician Name	

Notes:

GT-R Complimentary Performance Optimization Services*

*Necessary repairs discovered during inspections may incur service charges.

36 MONTHS

- Inspect the following:
 - ___ Measurement and adjustment (if needed) of wheel alignment
 - ___ Transmission settings

* Refer to the appropriate Schedule 1 or Schedule 2, recommended maintenance schedule for additional maintenance items.

GT-R Performance Optimization Service Log Record of Service Details

Measurement and Adjustment of wheel alignment

Measured Values

FR	Total Toe-In			in/mm
		Camber	LH	Deg/min (Dec/Deg)
	RH		Deg/min (Dec/Deg)	
	Caster	LH	Deg/min (Dec/Deg)	
RH		Deg/min (Dec/Deg)		
RR	Total Toe-In			in/mm
	Camber	LH	Deg/min (Dec/Deg)	
		RH	Deg/min (Dec/Deg)	

Adjusted Values

FR	Total Toe-In			in/mm
		Camber	LH	Deg/min (Dec/Deg)
	RH		Deg/min (Dec/Deg)	
	Caster	LH	Deg/min (Dec/Deg)	
RH		Deg/min (Dec/Deg)		
RR	Total Toe-In			in/mm
	Camber	LH	Deg/min (Dec/Deg)	
		RH	Deg/min (Dec/Deg)	

Transmission Settings

Measured Values

Engine Speed	rpm
Trans. Oil Temp.	°F (°C)

Status of Transmission Setting

Clutch Gear Learning	Previous Learned Value
	Current Learned Value

*Circle the settings as delivered to the Customer

Clutch A touch point setting value	
Clutch B touch point setting value	
Adjust clutch A capacity setting value	
Adjust clutch B capacity setting value	

Customer Name	
Address	

Mileage	Miles/km
Dealer Name	
Date	
Technician Name	

Notes:

6,000 MILES OR 6 MONTHS

SCHEDULE 1 MAINTENANCE

- Replace engine oil and filter
- Inspect the following:
 - ___ Axle & suspension parts
 - ___ Brake pads & rotors
 - ___ Drive shaft boots
 - ___ Exhaust system
 - ___ Front suspension ball joints
 - ___ Propeller shaft
 - ___ Steering gear and linkage
 - ___ Steering linkage ball joints

SCHEDULE 2 MAINTENANCE

- Replace engine oil and filter

12,000 MILES OR 12 MONTHS

SCHEDULE 1 MAINTENANCE

- Replace engine oil and filter
- Replace in-cabin microfilter
- Inspect the following:
 - ___ <Engine startability and abnormal sound>
 - ___ <Driving performance at low and accelerating speed>
 - ___ <Throttle chamber deposits>
 - ___ Axle & suspension parts
 - ___ Brake lines & cables
 - ___ Brake pads & rotors
 - ___ Differential oil (front & rear)
 - ___ Drive shaft boots
 - ___ Exhaust system
 - ___ Front suspension ball joints
 - ___ Transmission oil
 - ___ Propeller shaft
 - ___ Steering gear and linkage
 - ___ Steering linkage ball joints

SCHEDULE 2 MAINTENANCE

- Replace engine oil and filter
- Replace in-cabin microfilter
- Inspect the following:
 - ___ <Engine startability and abnormal sound>
 - ___ <Driving performance at low and accelerating speed>
 - ___ <Throttle chamber deposits>
 - ___ Brake lines & cables
 - ___ Brake pads & rotors
 - ___ Differential oil (front & rear)
 - ___ Drive shaft boots
 - ___ Transmission oil
 - ___ Propeller shaft

<>: Performed based on the number of service months only.

Refer to the appropriate GT-R Performance Optimization Services section for additional maintenance items.

18,000 MILES OR 18 MONTHS

SCHEDULE 1 MAINTENANCE

- Replace engine oil and filter
- < Replace Nissan Intelligent Key™ battery >
- Inspect the following:
 - Axle & suspension parts
 - Brake pads & rotors
 - Drive shaft boots
 - Exhaust system
 - Front suspension ball joints
 - Propeller shaft
 - Steering gear and linkage
 - Steering linkage ball joints

SCHEDULE 2 MAINTENANCE

- Replace engine oil and filter

<>: Performed based on the number of service months only.

24,000 MILES OR 24 MONTHS

SCHEDULE 1 MAINTENANCE

- Replace engine oil and filter
- Replace engine coolant
- Replace in-cabin microfilter
- <Replace brake fluid>
- Inspect the following:
 - ___ <Engine startability and abnormal sound>
 - ___ <Driving performance at low and accelerating speed>
 - ___ <Throttle chamber deposits>
 - ___ Axle & suspension parts
 - ___ Brake lines & cables
 - ___ Brake pads & rotors
 - ___ Differential oil (front & rear)
 - ___ Engine drive belts
 - ___ Drive shaft boots
 - ___ Exhaust system
 - ___ Front suspension ball joints
 - ___ Fuel lines/connections
 - ___ Fuel tank vapor vent system hoses
 - ___ Transmission oil
 - ___ Propeller shaft
 - ___ Steering gear and linkage
 - ___ Steering linkage ball joints

SCHEDULE 2 MAINTENANCE

- Replace engine oil and filter
- Replace engine coolant
- Replace in-cabin microfilter
- <Replace brake fluid>
- Inspect the following:
 - ___ <Engine startability and abnormal sound>
 - ___ <Driving performance at low and accelerating speed>
 - ___ <Throttle chamber deposits>
 - ___ Brake lines & cables
 - ___ Brake pads & rotors
 - ___ Differential oil (front & rear)
 - ___ Engine drive belts
 - ___ Drive shaft boots
 - ___ Exhaust system
 - ___ Front suspension ball joints
 - ___ Fuel lines/connections
 - ___ Fuel tank vapor vent system hoses
 - ___ Transmission oil
 - ___ Propeller shaft
 - ___ Steering gear and linkage
 - ___ Steering linkage ball joints

<>: Performed based on the number of service months only.

Refer to the appropriate GT-R Performance Optimization Services section for additional maintenance items.

30,000 MILES OR 30 MONTHS

SCHEDULE 1 MAINTENANCE

- Replace engine oil and filter
- [Replace engine air filter]
- [Replace spark plugs for NISMO]¹
- Inspect the following:
 - Axle & suspension parts
 - Brake pads & rotors
 - Drive shaft boots
 - Exhaust system
 - Front suspension ball joints
 - Propeller shaft
 - Steering gear and linkage
 - Steering linkage ball joints

SCHEDULE 2 MAINTENANCE

- Replace engine oil and filter
- [Replace engine air filter]
- [Replace spark plugs for NISMO]¹

¹ Replace spark plug when the spark plug gap reaches 0.9 mm (0.035 in) or more, even if within specified periodic replacement mileage.

[]: Performed based on the mileage only.

36,000 MILES OR 36 MONTHS

SCHEDULE 1 MAINTENANCE

- [Replace engine oil and filter]
- < Replace Nissan Intelligent Key™ battery >
- Replace in-cabin microfilter
- [Replace transmission oil]
- [Replace differential oil (front & rear)]
- Inspect the following:
 - ___ <Engine startability and abnormal sound>
 - ___ <Driving performance at low and accelerating speed>
 - ___ <Throttle chamber deposits>
 - ___ Engine drive belts
 - ___ Axle & suspension parts
 - ___ Brake lines & cables
 - ___ Brake pads & rotors
 - ___ Drive shaft boots
 - ___ Exhaust system
 - ___ Front suspension ball joints
 - ___ Propeller shaft
 - ___ Steering gear and linkage
 - ___ Steering linkage ball joints

SCHEDULE 2 MAINTENANCE

- [Replace engine oil and filter]
- Replace in-cabin microfilter
- [Replace transmission oil]
- [Replace differential oil (front & rear)]
- Inspect the following:
 - ___ <Engine startability and abnormal sound>
 - ___ <Driving performance at low and accelerating speed>
 - ___ <Throttle chamber deposits>
 - ___ Engine drive belts
 - ___ Brake lines & cables
 - ___ Brake pads & rotors
 - ___ Drive shaft boots
 - ___ Propeller shaft

[]: Performed based on the mileage only.

<>: Performed based on the number of service months only.

Refer to the appropriate GT-R Performance Optimization Services section for additional maintenance items.

42,000 MILES OR 42 MONTHS

SCHEDULE 1 MAINTENANCE

- Replace engine oil and filter
- Inspect the following:
 - Axle & suspension parts
 - Brake pads & rotors
 - Drive shaft boots
 - Exhaust system
 - Front suspension ball joints
 - Propeller shaft
 - Steering gear and linkage
 - Steering linkage ball joints

SCHEDULE 2 MAINTENANCE

- Replace engine oil and filter

GENUINE NISSAN PARTS YOU CAN RELY ON

Genuine NISSAN Oil Filters

Genuine NISSAN Oil Filters are designed specifically for your vehicle.

Genuine NISSAN Oil Filters have an anti-drainback valve that keeps oil in the filter when the engine is not running. This prevents harmful engine wear on start-up.



48,000 MILES OR 48 MONTHS

SCHEDULE 1 MAINTENANCE

- Replace engine oil and filter
- Replace engine coolant
- Replace in-cabin microfilter
- <Replace brake fluid>
- Inspect the following:
 - ___ <Engine startability and abnormal sound>
 - ___ <Driving performance at low and accelerating speed>
 - ___ <Throttle chamber deposits>
 - ___ Axle & suspension parts
 - ___ Brake lines & cables
 - ___ Brake pads & rotors
 - ___ Differential oil (front & rear)
 - ___ Drive shaft boots
 - ___ Engine drive belts
 - ___ Exhaust system
 - ___ Transmission settings¹
 - ___ Measurement and adjustment of wheel alignment¹
 - ___ Front suspension ball joints
 - ___ Fuel lines/connections
 - ___ Fuel tank vapor vent system hoses
 - ___ Transmission oil
 - ___ Propeller shaft
 - ___ Steering gear and linkage
 - ___ Steering linkage ball joints

SCHEDULE 2 MAINTENANCE

- Replace engine oil and filter
- Replace engine coolant
- Replace in-cabin microfilter
- <Replace brake fluid>
- Inspect the following:
 - ___ <Engine startability and abnormal sound>
 - ___ <Driving performance at low and accelerating speed>
 - ___ <Throttle chamber deposits>
 - ___ Axle & suspension parts
 - ___ Brake lines & cables
 - ___ Brake pads & rotors
 - ___ Differential oil (front & rear)
 - ___ Drive shaft boots
 - ___ Engine drive belts
 - ___ Exhaust system
 - ___ Transmission settings¹
 - ___ Measurement and adjustment of wheel alignment¹
 - ___ Front suspension ball joints
 - ___ Fuel lines/connections
 - ___ Fuel tank vapor vent system hoses
 - ___ Transmission oil
 - ___ Propeller shaft
 - ___ Steering gear and linkage
 - ___ Steering linkage ball joints

¹ If the performance optimization services at 36 months (free of charge) including this inspection have not been finished yet, this inspection is not necessary.

<>: Performed based on the number of service months only.

GT-R Performance Optimization Service Log Record of Service Details

Measurement and Adjustment of wheel alignment

Measured Values

FR	Total Toe-In			in/mm
		Camber	LH	Deg/min (Dec/Deg)
	RH		Deg/min (Dec/Deg)	
	Caster	LH	Deg/min (Dec/Deg)	
RH		Deg/min (Dec/Deg)		
RR	Total Toe-In			in/mm
	Camber	LH	Deg/min (Dec/Deg)	
		RH	Deg/min (Dec/Deg)	

Adjusted Values

FR	Total Toe-In			in/mm
		Camber	LH	Deg/min (Dec/Deg)
	RH		Deg/min (Dec/Deg)	
	Caster	LH	Deg/min (Dec/Deg)	
RH		Deg/min (Dec/Deg)		
RR	Total Toe-In			in/mm
	Camber	LH	Deg/min (Dec/Deg)	
		RH	Deg/min (Dec/Deg)	

Transmission Settings

Measured Values

Engine Speed		rpm
Trans. Oil Temp.		°F (°C)

Status of Transmission Setting

Clutch Gear Learning	Previous Learned Value
	Current Learned Value

*Circle the settings as delivered to the Customer

Clutch A touch point setting value	
Clutch B touch point setting value	
Adjust clutch A capacity setting value	
Adjust clutch B capacity setting value	

Customer Name	
Address	

Mileage	Miles/km
Dealer Name	
Date	
Technician Name	

Notes:

54,000 MILES OR 54 MONTHS

SCHEDULE 1 MAINTENANCE

- Replace engine oil and filter
- < Replace Nissan Intelligent Key™ battery >
- Inspect the following:
 - Axle & suspension parts
 - Brake pads & rotors
 - Drive shaft boots
 - Exhaust system
 - Front suspension ball joints
 - Propeller shaft
 - Steering gear and linkage
 - Steering linkage ball joints

SCHEDULE 2 MAINTENANCE

- Replace engine oil and filter

[]: Performed based on the mileage only.

<>: Performed based on the number of service months only.

GENUINE NISSAN PARTS YOU CAN RELY ON*

Batteries

If your vehicle is slow to start or will not start, please see your NISSAN dealer about a Genuine NISSAN Replacement Battery. Genuine NISSAN Replacement Batteries are designed to meet your vehicle's original specifications and feature an 84 Month Limited Warranty with 24 Month Free Replacement, regardless of mileage. Plus your NISSAN dealer has the knowledge and equipment to test your battery before it fails, so you can travel in confidence.



* May or may not apply outside the United States, please inquire of your dealer.
See your participating NISSAN GT-R certified dealer for details.

60,000 MILES OR 60 MONTHS

SCHEDULE 1 MAINTENANCE

- Replace engine oil and filter
- Replace in-cabin microfilter
- [Replace engine air filter]
- [Replace spark plugs except NISMO]²
- [Replace spark plugs for NISMO]³
- <Replace brake hoses>
- Inspect the following:
 - ___ <Engine startability and abnormal sound>
 - ___ <Driving performance at low and accelerating speed>
 - ___ <Throttle chamber deposits>
 - ___ Transmission settings¹
 - ___ Measurement and adjustment of wheel alignment¹
 - ___ Axle & suspension parts
 - ___ Brake lines & cables
 - ___ Brake pads & rotors
 - ___ Differential oil (front & rear)
 - ___ Drive shaft boots
 - ___ Engine drive belts
 - ___ Exhaust system
 - ___ Front suspension ball joints
 - ___ Transmission oil
 - ___ Propeller shaft
 - ___ Steering gear and linkage
 - ___ Steering linkage ball joints

SCHEDULE 2 MAINTENANCE

- Replace engine oil and filter
- Replace in-cabin microfilter
- [Replace engine air filter]
- [Replace spark plugs except NISMO]²
- [Replace spark plugs for NISMO]³
- Replace brake hoses
- Inspect the following:
 - ___ <Engine startability and abnormal sound>
 - ___ <Driving performance at low and accelerating speed>
 - ___ <Throttle chamber deposits>
 - ___ Transmission settings¹
 - ___ Measurement and adjustment of wheel alignment¹
 - ___ Brake lines & cables
 - ___ Brake pads & rotors
 - ___ Differential oil (front & rear)
 - ___ Drive shaft boots
 - ___ Engine drive belts
 - ___ Transmission oil
 - ___ Propeller shaft

¹ If the performance optimization services at 36 months (free of charge) including this inspection have not been finished yet, this inspection is not necessary.

² Replace spark plug when the spark plug gap reaches 1.0 mm (0.039 in) or more, even if within specified periodic replacement mileage.

³ Replace spark plug when the spark plug gap reaches 0.9 mm (0.035 in) or more, even if within specified periodic replacement mileage.

[]: Performed based on the mileage only.

<>: Performed based on the number of service months only.

GT-R Performance Optimization Service Log Record of Service Details

Measurement and Adjustment of wheel alignment

Measured Values

FR	Total Toe-In		in/mm
	Camber	LH	Deg/min (Dec/Deg)
		RH	Deg/min (Dec/Deg)
	Caster	LH	Deg/min (Dec/Deg)
RH		Deg/min (Dec/Deg)	
RR	Total Toe-In		in/mm
	Camber	LH	Deg/min (Dec/Deg)
		RH	Deg/min (Dec/Deg)

Adjusted Values

FR	Total Toe-In		in/mm
	Camber	LH	Deg/min (Dec/Deg)
		RH	Deg/min (Dec/Deg)
	Caster	LH	Deg/min (Dec/Deg)
RH		Deg/min (Dec/Deg)	
RR	Total Toe-In		in/mm
	Camber	LH	Deg/min (Dec/Deg)
		RH	Deg/min (Dec/Deg)

Transmission Settings

Measured Values

Engine Speed	rpm
Trans. Oil Temp.	°F (°C)

Status of Transmission Setting

Clutch Gear Learning	Previous Learned Value
	Current Learned Value

*Circle the settings as delivered to the Customer

Clutch A touch point setting value	
Clutch B touch point setting value	
Adjust clutch A capacity setting value	
Adjust clutch B capacity setting value	

Customer Name	
Address	

Mileage	Miles/km
Dealer Name	
Date	
Technician Name	

Notes:

66,000 MILES OR 66 MONTHS

SCHEDULE 1 MAINTENANCE

- Replace engine oil and filter
- Inspect the following:
 - Axle & suspension parts
 - Brake pads & rotors
 - Drive shaft boots
 - Exhaust system
 - Front suspension ball joints
 - Propeller shaft
 - Steering gear and linkage
 - Steering linkage ball joints

SCHEDULE 2 MAINTENANCE

- Replace engine oil and filter

NISSAN SERVICES DESIGNED WITH YOU IN MIND*

Your NISSAN Dealer is Your Complete Source for Tires

- Original Equipment Tires and Other Major Brands
- Competitive Pricing
- Road Hazard Protection Included With Each Tire**
- Convenience
- Factory Trained Technicians

Tires are an important component of your NISSAN driving experience. They provide the four points of contact between your vehicle and the road and affect acceleration, braking, cornering, load-carrying capacity, and overall handling and performance.

NISSAN engineers perform extensive tests to help determine which tires are best suited for use on NISSAN vehicles. Replacing the tires on your NISSAN with those that meet the Original Equipment specifications will help maximize your vehicle's handling, comfort and safety.

* May differ or not apply outside the United States, please inquire of your dealer.

** Excludes Medalist Brand

See your participating NISSAN dealer for details.



72,000 MILES OR 72 MONTHS

SCHEDULE 1 MAINTENANCE

- Replace engine oil and filter
- < Replace Nissan Intelligent Key™ battery >
- Replace engine coolant
- [Replace transmission oil]
- [Replace differential oil (front & rear)]
- Replace in-cabin microfilter
- <Replace brake fluid>
- Inspect the following:
 - ___ <Engine startability and abnormal sound>
 - ___ <Driving performance at low and accelerating speed>
 - ___ <Throttle chamber deposits>
 - ___ Axle & suspension parts
 - ___ Brake lines & cables
 - ___ Brake pads & rotors
 - ___ Transmission settings¹
 - ___ Measurement and adjustment of wheel alignment¹
 - ___ Drive shaft boots
 - ___ Engine drive belts
 - ___ Exhaust system
 - ___ Front suspension ball joints
 - ___ Fuel lines/connections
 - ___ Fuel tank vapor vent system hoses
 - ___ Propeller shaft
 - ___ Steering gear and linkage
 - ___ Steering linkage ball joints

SCHEDULE 2 MAINTENANCE

- Replace engine oil and filter
- Replace engine coolant
- [Replace transmission oil]
- [Replace differential oil (front & rear)]
- Replace in-cabin microfilter
- <Replace brake fluid>
- Inspect the following:
 - ___ <Engine startability and abnormal sound>
 - ___ <Driving performance at low and accelerating speed>
 - ___ <Throttle chamber deposits>
 - ___ Brake lines & cables
 - ___ Brake pads & rotors
 - ___ Transmission settings¹
 - ___ Measurement and adjustment of wheel alignment¹
 - ___ Drive shaft boots
 - ___ Engine drive belts
 - ___ Exhaust system
 - ___ Front suspension ball joints
 - ___ Fuel lines/connections
 - ___ Fuel tank vapor vent system hoses
 - ___ Propeller shaft
 - ___ Steering gear and linkage
 - ___ Steering linkage ball joints

¹ If the performance optimization services at 36 months (free of charge) including this inspection have not been finished yet, this inspection is not necessary.

[]: Performed based on the mileage only.

<>: Performed based on the number of service months only.

GT-R Performance Optimization Service Log Record of Service Details

Measurement and Adjustment of wheel alignment

Measured Values

FR	Total Toe-In		in/mm
	Camber	LH	Deg/min (Dec/Deg)
		RH	Deg/min (Dec/Deg)
	Caster	LH	Deg/min (Dec/Deg)
RH		Deg/min (Dec/Deg)	
RR	Total Toe-In		in/mm
	Camber	LH	Deg/min (Dec/Deg)
		RH	Deg/min (Dec/Deg)

Adjusted Values

FR	Total Toe-In		in/mm
	Camber	LH	Deg/min (Dec/Deg)
		RH	Deg/min (Dec/Deg)
	Caster	LH	Deg/min (Dec/Deg)
RH		Deg/min (Dec/Deg)	
RR	Total Toe-In		in/mm
	Camber	LH	Deg/min (Dec/Deg)
		RH	Deg/min (Dec/Deg)

Transmission Settings

Measured Values

Engine Speed	rpm
Trans. Oil Temp.	°F (°C)

Status of Transmission Setting

Clutch Gear Learning	Previous Learned Value
	Current Learned Value

*Circle the settings as delivered to the Customer

Clutch A touch point setting value	
Clutch B touch point setting value	
Adjust clutch A capacity setting value	
Adjust clutch B capacity setting value	

Customer Name	
Address	

Mileage	Miles/km
Dealer Name	
Date	
Technician Name	

Notes:

78,000 MILES OR 78 MONTHS

SCHEDULE 1 MAINTENANCE

- Replace engine oil and filter
- Inspect the following:
 - Axle & suspension parts
 - Brake pads & rotors
 - Drive shaft boots
 - Exhaust system
 - Front suspension ball joints
 - Propeller shaft
 - Steering gear and linkage
 - Steering linkage ball joints

SCHEDULE 2 MAINTENANCE

- Replace engine oil and filter

GENUINE NISSAN PARTS YOU CAN RELY ON

Wiper Blades

Genuine NISSAN Wiper Blades and Arms are designed to fit your NISSAN and can be installed by any NISSAN dealer in just minutes.



84,000 MILES OR 80 MONTHS

SCHEDULE 1 MAINTENANCE

- Replace engine oil and filter
- Replace in-cabin microfilter
- Inspect the following:
 - ___ <Engine startability and abnormal sound>
 - ___ <Driving performance at low and accelerating speed>
 - ___ <Throttle chamber deposits>
 - ___ Transmission settings¹
 - ___ Measurement and adjustment of wheel alignment¹
 - ___ Axle & suspension parts
 - ___ Brake lines & cables
 - ___ Brake pads & rotors
 - ___ Differential oil (front & rear)
 - ___ Drive shaft boots
 - ___ Engine drive belts
 - ___ Exhaust system
 - ___ Front suspension ball joints
 - ___ Propeller shaft
 - ___ Transmission oil
 - ___ Steering gear and linkage
 - ___ Steering linkage ball joints

SCHEDULE 2 MAINTENANCE

- Replace engine oil and filter
- Replace in-cabin microfilter
- Inspect the following:
 - ___ <Engine startability and abnormal sound>
 - ___ <Driving performance at low and accelerating speed>
 - ___ <Throttle chamber deposits>
 - ___ Transmission settings¹
 - ___ Measurement and adjustment of wheel alignment¹
 - ___ Brake lines & cables
 - ___ Brake pads & rotors
 - ___ Differential oil (front & rear)
 - ___ Drive shaft boots
 - ___ Engine drive belts
 - ___ Transmission oil
 - ___ Propeller shaft

¹ If the performance optimization services at 36 months (free of charge) including this inspection have not been finished yet, this inspection is not necessary.

<>: Performed based on the number of service months only.

GT-R Performance Optimization Service Log Record of Service Details

Measurement and Adjustment of wheel alignment

Measured Values

FR	Total Toe-In			in/mm
		Camber	LH	Deg/min (Dec/Deg)
	RH		Deg/min (Dec/Deg)	
	Caster	LH	Deg/min (Dec/Deg)	
RH		Deg/min (Dec/Deg)		
RR	Total Toe-In			in/mm
	Camber	LH	Deg/min (Dec/Deg)	
		RH	Deg/min (Dec/Deg)	

Adjusted Values

FR	Total Toe-In			in/mm
		Camber	LH	Deg/min (Dec/Deg)
	RH		Deg/min (Dec/Deg)	
	Caster	LH	Deg/min (Dec/Deg)	
RH		Deg/min (Dec/Deg)		
RR	Total Toe-In			in/mm
	Camber	LH	Deg/min (Dec/Deg)	
		RH	Deg/min (Dec/Deg)	

Transmission Settings

Measured Values

Engine Speed	rpm
Trans. Oil Temp.	°F (°C)

Status of Transmission Setting

Clutch Gear Learning	Previous Learned Value
	Current Learned Value

*Circle the settings as delivered to the Customer

Clutch A touch point setting value	
Clutch B touch point setting value	
Adjust clutch A capacity setting value	
Adjust clutch B capacity setting value	

Customer Name	
Address	

Mileage	Miles/km
Dealer Name	
Date	
Technician Name	

Notes:

90,000 MILES OR 90 MONTHS

SCHEDULE 1 MAINTENANCE

- Replace engine oil and filter
- < Replace Nissan Intelligent Key™ battery >
- [Replace engine air filter]
- [Replace spark plugs for NISMO]¹
- Inspect the following:
 - ___ Axle & suspension parts
 - ___ Brake pads & rotors
 - ___ Drive shaft boots
 - ___ Exhaust system
 - ___ Front suspension ball joints
 - ___ Propeller shaft
 - ___ Steering gear and linkage
 - ___ Steering linkage ball joints

SCHEDULE 2 MAINTENANCE

- Replace engine oil and filter
- [Replace engine air filter]
- [Replace spark plugs for NISMO]¹

¹ Replace spark plug when the spark plug gap reaches 0.9 mm (0.035 in) or more, even if within specified periodic replacement mileage.

[]: Performed based on the mileage only.

<>: Performed based on the number of service months only.

GENUINE NISSAN PARTS YOU CAN RELY ON

In-Cabin Microfilter

The In-Cabin Microfilter filters the air you breathe in your vehicle. This system filters both outside and recirculated air used by the air conditioning system in your vehicle. Replacing the Microfilter every year or 12,000 miles is the best way to help prevent road dust, pollen and other air pollutants from entering the interior of your vehicle and the air you breathe. If your vehicle is not equipped with an In-Cabin Microfilter system – see your NISSAN dealer about getting one installed – you'll breathe easier.



New Microfilter



Requires Replacement

96,000 MILES OR 96 MONTHS

SCHEDULE 1 MAINTENANCE

- Replace engine oil and filter
- Replace engine coolant
- Replace in-cabin microfilter
- <Replace brake fluid>
- Inspect the following:
 - ___ <Engine startability and abnormal sound>
 - ___ <Driving performance at low and accelerating speed>
 - ___ <Throttle chamber deposits>
 - ___ Axle & suspension parts
 - ___ Brake lines & cables
 - ___ Brake pads & rotors
 - ___ Transmission oil
 - ___ Differential oil (front & rear)
 - ___ Drive shaft boots
 - ___ Engine drive belts
 - ___ Transmission settings¹
 - ___ Measurement and adjustment of wheel alignment¹
 - ___ Exhaust system
 - ___ Front suspension ball joints
 - ___ Fuel lines/connections
 - ___ Fuel tank vapor vent system hoses
 - ___ Propeller shaft
 - ___ Steering gear and linkage
 - ___ Steering linkage ball joints

SCHEDULE 2 MAINTENANCE

- Replace engine oil and filter
- Replace engine coolant
- Replace in-cabin microfilter
- <Replace brake fluid>
- Inspect the following:
 - ___ <Engine startability and abnormal sound>
 - ___ <Driving performance at low and accelerating speed>
 - ___ <Throttle chamber deposits>
 - ___ Axle & suspension parts
 - ___ Brake lines & cables
 - ___ Brake pads & rotors
 - ___ Transmission oil
 - ___ Differential oil (front & rear)
 - ___ Drive shaft boots
 - ___ Engine drive belts
 - ___ Transmission settings¹
 - ___ Measurement and adjustment of wheel alignment¹
 - ___ Exhaust system
 - ___ Front suspension ball joints
 - ___ Fuel lines/connections
 - ___ Fuel tank vapor vent system hoses
 - ___ Propeller shaft
 - ___ Steering gear and linkage
 - ___ Steering linkage ball joints

¹ If the performance optimization services at 36 months (free of charge) including this inspection have not been finished yet, this inspection is not necessary.

<>: Performed based on the number of service months only.

GT-R Performance Optimization Service Log Record of Service Details

Measurement and Adjustment of wheel alignment

Measured Values

FR	Total Toe-In		in/mm
	Camber	LH	Deg/min (Dec/Deg)
		RH	Deg/min (Dec/Deg)
	Caster	LH	Deg/min (Dec/Deg)
RH		Deg/min (Dec/Deg)	
RR	Total Toe-In		in/mm
	Camber	LH	Deg/min (Dec/Deg)
		RH	Deg/min (Dec/Deg)

Adjusted Values

FR	Total Toe-In		in/mm
	Camber	LH	Deg/min (Dec/Deg)
		RH	Deg/min (Dec/Deg)
	Caster	LH	Deg/min (Dec/Deg)
RH		Deg/min (Dec/Deg)	
RR	Total Toe-In		in/mm
	Camber	LH	Deg/min (Dec/Deg)
		RH	Deg/min (Dec/Deg)

Transmission Settings

Measured Values

Engine Speed	rpm
Trans. Oil Temp.	°F (°C)

Status of Transmission Setting

Clutch Gear Learning	Previous Learned Value
	Current Learned Value

*Circle the settings as delivered to the Customer

Clutch A touch point setting value	
Clutch B touch point setting value	
Adjust clutch A capacity setting value	
Adjust clutch B capacity setting value	

Customer Name	
Address	

Mileage	Miles/km
Dealer Name	
Date	
Technician Name	

Notes:

MAINTENANCE LOG

<p>1,000 Miles</p> <p>Dealer Name: _____</p> <p>Date: _____</p> <p>Mileage: _____</p> <p>Dealer</p> <p>Stamp:</p>	<p>6,000 Miles or 6 Months</p> <p>Dealer Name: _____</p> <p>Date: _____</p> <p>Mileage: _____</p> <p>Dealer</p> <p>Stamp:</p>	<p>12,000 Miles or 12 Months</p> <p>Dealer Name: _____</p> <p>Date: _____</p> <p>Mileage: _____</p> <p>Dealer</p> <p>Stamp:</p>
<p>18,000 Miles or 18 Months</p> <p>Dealer Name: _____</p> <p>Date: _____</p> <p>Mileage: _____</p> <p>Dealer</p> <p>Stamp:</p>	<p>24,000 Miles or 24 Months</p> <p>Dealer Name: _____</p> <p>Date: _____</p> <p>Mileage: _____</p> <p>Dealer</p> <p>Stamp:</p>	<p>30,000 Miles or 30 Months</p> <p>Dealer Name: _____</p> <p>Date: _____</p> <p>Mileage: _____</p> <p>Dealer</p> <p>Stamp:</p>
<p>36,000 Miles or 36 Months</p> <p>Dealer Name: _____</p> <p>Date: _____</p> <p>Mileage: _____</p> <p>Dealer</p> <p>Stamp:</p>	<p>42,000 Miles or 42 Months</p> <p>Dealer Name: _____</p> <p>Date: _____</p> <p>Mileage: _____</p> <p>Dealer</p> <p>Stamp:</p>	<p>48,000 Miles or 48 Months</p> <p>Dealer Name: _____</p> <p>Date: _____</p> <p>Mileage: _____</p> <p>Dealer</p> <p>Stamp:</p>

MAINTENANCE LOG

<p>54,000 Miles or 54 Months</p> <p>Dealer Name: _____</p> <p>Date: _____</p> <p>Mileage: _____</p> <p>Dealer</p> <p>Stamp: _____</p>	<p>60,000 Miles or 60 Months</p> <p>Dealer Name: _____</p> <p>Date: _____</p> <p>Mileage: _____</p> <p>Dealer</p> <p>Stamp: _____</p>	<p>66,000 Miles or 66 Months</p> <p>Dealer Name: _____</p> <p>Date: _____</p> <p>Mileage: _____</p> <p>Dealer</p> <p>Stamp: _____</p>
<p>72,000 Miles or 72 Months</p> <p>Dealer Name: _____</p> <p>Date: _____</p> <p>Mileage: _____</p> <p>Dealer</p> <p>Stamp: _____</p>	<p>78,000 Miles or 78 Months</p> <p>Dealer Name: _____</p> <p>Date: _____</p> <p>Mileage: _____</p> <p>Dealer</p> <p>Stamp: _____</p>	<p>84,000 Miles or 84 Months</p> <p>Dealer Name: _____</p> <p>Date: _____</p> <p>Mileage: _____</p> <p>Dealer</p> <p>Stamp: _____</p>
<p>90,000 Miles or 90 Months</p> <p>Dealer Name: _____</p> <p>Date: _____</p> <p>Mileage: _____</p> <p>Dealer</p> <p>Stamp: _____</p>	<p>96,000 Miles or 96 Months</p> <p>Dealer Name: _____</p> <p>Date: _____</p> <p>Mileage: _____</p> <p>Dealer</p> <p>Stamp: _____</p>	

VEHICLE IDENTIFICATION

Vehicle Identification Number (VIN) _____

Delivery Date _____

Warranty Start Date _____

Mileage at Delivery _____

Model Year _____

Selling Dealer _____

Selling Dealer Phone _____



Nissan, the Nissan logo, and Nissan model names are Nissan trademarks.
©2016 Nissan North America, Inc. All rights reserved.

Publication No.: MB18EA 0R35U0
Printing : September 2017