

NISSAN INTELLIGENT MOBILITY™

Nissan Intelligent Mobility guides everything we do. We're using new technologies to transform cars from mere driving machines into assistants. Together the journey is more confident, connected, and exciting. Whether it's cars that assist in the driving task, or highways that charge your EV as you go along, it's all in the very near future. And it's a future already taking shape in the Nissan you drive today.

SEE Z® COME TO LIFE

Go to NissanUSA.com and find an interactive brochure for 370Z and every Nissan in the lineup. Available on desktop, smartphone, or tablet, it's the full product story - including demos, videos, and complete info on trims, colors, and accessories.



Innovation
that excites

2019 370Z® Coupe and Roadster



¹Available feature. ²Driving is serious business and requires your full attention. Obey all traffic laws, always drive safely, and wear your seat belt. Damage resulting from racing, competitive driving, track, off-road and/or airstrip use not covered by warranty. See your New Vehicle Limited Warranty booklet and Owner's Manual for proper vehicle operation and complete warranty details. ³Do not drive the vehicle with the top partially opened. Always make sure the top is either fully opened or closed before driving. See Owner's Manual regarding proper use. ⁴Professional driver. Closed course. Obey all traffic laws, always drive safely and wear your seat belt. Damage resulting from racing, competitive driving, track and/or airstrip use not covered by warranty. See your New Vehicle Limited Warranty and Owner's Manual for proper vehicle operation and complete warranty details. ⁵Tires are different from actual production vehicle. ⁶Extra cost option. ⁷Coupe only. ⁸Roadster only. ⁹Feature availability is dependent on vehicle model, trim level, packaging and options. Compatible connected device may be required and feature availability may be dependent on device's capability. Refer to connected device's Owner's Manual for details. Late availability for some features. **Driving is serious business and requires your full attention.** Only use features and connected devices when safe and legal to do so. Some features, including automatic crash notification and SOS, are dependent upon the telematics device being in operative condition, its ability to connect to a wireless network, compatible wireless network availability, navigation map data and GPS satellite signal receptions, the absence of which can limit or prevent the ability to reach Customer Care or receive support. GPS mapping may not be detailed in all areas or reflect current road status. Never program GPS while driving. Only use Remote Engine Start and Remote Horn features in accordance with any laws, rules or ordinances in effect in your vehicle's location. Some services and features are provided by independent companies not within Nissan's control. **Should service provider terminate or restrict service or features, service or features may be suspended or terminated without notice or with no liability to Nissan or its partners or agents.** Services and features may require compatible cellular network provided by independent companies not within Nissan or its partners' or agents' control. Cellular network signal strength may vary and may not be available in all areas or at all times. Services and features may not function if cellular network is unavailable, restricted, or terminated. Nissan and its partners or agents are not responsible for associated costs or other third party changes that may be required for continued operation due to cellular network unavailability, restriction, or termination (including equipment replacements/upgrades, if available, or roaming charges on alternative networks). Technology is evolving, and changes by independent companies are not within Nissan's or its partners' or agents' control. Enrollment, owner consent, personal identification number (PIN), and subscription agreement may be required to receive full suite of features and services. Trial periods (if applicable) begin on the date of vehicle purchase or lease of a new Nissan. Trial periods may be subject to change at any time and may be subject to early termination without notice. Required subscriptions may be sold separately for each available feature or service after trial period ends, and may continue until you call service provider to cancel. Installation costs, one-time activation fee, other fees and taxes may apply. Fees and programming subject to change. Feature may be subject to age restrictions in some areas. Subscriptions governed by service provider's subscription agreement, terms and conditions and privacy statements available at service provider's website. Text rates or data usage may apply. The Nissan names, logos and slogans are trademarks owned by or licensed to Nissan Motor Co. Ltd. or its North American subsidiaries. Other trademarks and trade names are those of their respective owners. For important safety information, system limitations, and additional operating and feature information, see dealer, Owner's Manual, or NissanUSA.com/connect/important-information. Terms and conditions of Subscriber Agreement apply. NissanConnect EV features are provided by Nissan North America. Sirius XM Connected Vehicle Services Inc. ("Sirius XM") partners with Nissan North America to provide NissanConnect Services powered by SiriusXM. All stated terms, disclosures and limitations of liability associated with connected vehicle services extend to Sirius XM and its affiliate, Sirius XM Radio Inc. SiriusXM is a registered trademark of Sirius XM Radio Inc. ¹⁰RearView Monitor may not detect every object and does not eliminate blind spots or warn of moving objects. See Owner's Manual for safety information. ¹¹Driving is serious business and requires your full attention. If you have to use the connected device while driving, exercise extreme caution at all times so full attention may be given to vehicle operation. ¹²Air bags are only a supplemental restraint system; always wear your seat belt. Even with the occupant-classification sensor, rear-facing child restraints should not be placed in the front-passenger's seat. All children 12 and under should ride in the rear seat properly secured in child restraints, booster seats, or seat belts according to their size. Air bags will only inflate in certain accidents; see your Owner's Manual for more details. ¹³Never program while driving. GPS mapping may not be detailed in all areas or reflect current road status. ¹⁴Genuine Nissan Accessories are covered by Nissan's Limited Warranty on Genuine Nissan Replacement Parts, Genuine NISMO® S-Tune Parts, and Genuine Nissan Accessories for the longer of 12 months/12,000 miles (whichever occurs first) or the remaining period under the 3-year/36,000-mile (whichever occurs first) Nissan New Vehicle Limited Warranty. Terms and conditions apply. See dealer, Warranty Information Booklet, or parts.NissanUSA.com for details. ¹⁵Premium fuel required. ¹⁶Manual transmission only. ¹⁷Automatic transmission only. ¹⁸Brake Assist cannot prevent all collisions and may not provide warning or braking in all conditions. Driver should monitor traffic conditions and brake as needed to prevent collisions. See Owner's Manual for safety information. ¹⁹Vehicle Dynamic Control cannot prevent collisions due to abrupt steering, carelessness, or dangerous driving technique. It should remain on when driving, except when freeing the vehicle from mud or snow. See Owner's Manual for safety information. ²⁰TPMS is not a substitute for regular tire pressure checks. ²¹For a period of 36 months/36,000 miles from the date the vehicle is delivered to the first retail buyer or otherwise put into use, whichever is earlier. Alcantara® is a registered trademark of Alcantara S.p.A. Corporation. Bluetooth® is a registered trademark of Bluetooth SIG, Inc. Bose® is a registered trademark of The Bose Corporation. Bridgestone® and Potenza® are registered trademarks of Bridgestone Corporation. Dunlop® is a registered trademark of DNA Ltd. Corporation. EXEDY® is a registered trademark of EXEDY Corporation. Facebook® is a registered trademark of Facebook, Inc. HomeLink® is a registered trademark of Genex Corporation. RAYS® is a registered trademark of RAYS Engineering. Recaro® is a registered trademark of Recaro North America Inc. The Sirius®, XM®, and SiriusXM® names and all related marks and logos are trademarks of Sirius XM Radio Inc. All other trademarks are the property of their respective owners. SP Sport MAXX® is a registered trademark of SRI USA, Inc. Twitter® is a registered trademark of Twitter, Inc. Yokohama® and ADVAN Sport® are registered trademarks of The Yokohama Tire Corporation. YouTube® is a registered trademark of Google Inc. This brochure is intended for general descriptive and informational purposes only. It is subject to change and does not constitute an offer, representation or warranty (express or implied) by Nissan North America, Inc. Interested parties should confirm the accuracy of any information in this brochure as it relates to a vehicle directly with Nissan North America, Inc., before relying on it to make a purchase decision. Nissan North America, Inc., reserves the right to make changes, at any time, without prior notice, in prices, colors, materials, equipment, specifications, and models and to discontinue models or equipment. Due to continuous product development and other pre- and post-production factors, actual vehicle, materials and specifications may vary from this brochure. Some vehicles shown with optional equipment. See the actual vehicle for complete accuracy. Availability and delivery times for particular models or equipment may vary. Specifications, options and accessories may differ in Hawaii, U.S. territories and other countries. For additional information on availability, options or accessories, see your Nissan dealer or contact Nissan North America, Inc. At NissanUSA.com, you'll find virtual product demonstrations, a way to "build your own Nissan," a dealer locator, and more information about key Nissan support services. Or if you'd prefer, call 1-800-NISSAN-3 for answers to specific questions about '19 Z® or any other Nissan vehicle. The Nissan names, logos, product names, feature names, and slogans are trademarks owned by or licensed to Nissan Motor Co. Ltd. and/or its North American subsidiaries. Other trademarks and trade names are those of their respective owners. **Always wear your seat belt, and please drive responsibly.** ©2018 Nissan North America, Inc. '19 Z. 1921475-N-4/18-60K-CGI

EVERY DRIVE is something special. The battle cry of a legendary 332-hp VQ V6 paired with the world's first rev-matching manual transmission.¹ The relentless cornering grip of a dynamically balanced chassis talking to you through a driver-focused cockpit. The 2019 Nissan 370Z.[®] The drive of your life is waiting. Make sure it **IS LEGENDARY.**²



3.7
LITER
V6

332
HP

270
LB-FT
TORQUE



THE 2019 370Z® HERITAGE EDITION
IT'S NEVER BEEN
GOOD AT BLENDING IN

Celebrating nearly 50 years of rewriting the rules of style, performance and value, the 370Z Heritage Edition is inspired by the 1977 280Z with Special Decor Package (ZZZap). It features unique contrasting exterior panels and graphics, and a special interior as vibrant as the Z itself.



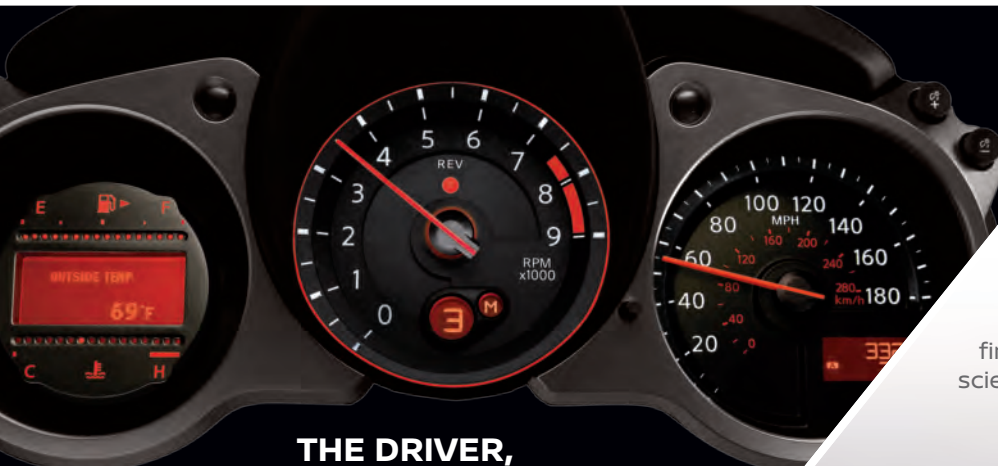
A PERFECT BALANCE OF
CONFIDENCE AND CONTROL

Designed to conquer corners, the Nissan 370Z starts with a low center of gravity and a short wheelbase for quick response. Bring it all together with an enthusiast's wish list of high-performance componentry, and you'll find pure joy as the 370Z elevates handling science into pure performance art.



THE DRIVER,
FIRST AND FOREMOST

Gauges that move with the steering column, ensuring a clear view. A driver's seat with special cutaways that give arms and legs room to move. From the moment you get in, you can tell – the Z® interior has been custom-tailored to give you the drive of your life.



THE DOWNSHIFT,
PERFECTED

Included on the Coupe Sport and NISMO® models, SynchroRev Match® technology – the first in any production car – blips the throttle to the ideal engine rpm for a supremely smooth downshift. For reduced pedal effort and enhanced precision and control, every Z® with a manual transmission features an EXEDY® high-performance clutch.



EXEDY



370Z® ROADSTER

OPEN TO THE POSSIBILITIES

Expanding the definition of “convertible weather.” The 370Z Roadster is designed to let you enjoy top-down driving longer – whether it’s just later in the day, or later in the season.³ Available heated and cooled seats help keep you comfortable even when there’s a chill in the air. Aerodynamic design helps minimize air buffeting in and around the cabin, for a quieter ride. And when it’s time to put up the top, a double-insulated roof helps keep the cabin warmer on cool days, and reduces interior noise, making this one roadster you’ll want to enjoy year-round.



nismo®

What happens when the fanatical engineers at NISMO are let loose on the 370Z? You get 350 horsepower surrounded by a NISMO-tuned suspension and a driver-focused interior, all wrapped in a jaw-dropping NISMO-designed aerodynamic body. Obsessive? Perhaps. Extraordinary? Most definitely.

350 HP



Competition-tuned handling. Competition-inspired design. Serious grip starts with specially tuned springs, shocks, and stabilizer bars designed to satisfy the most demanding enthusiast. Extra braces on the front strut tower bar and special vibration dampers on the front body frame rail and rear subframe are added for impressive overall body rigidity and the feel of a controlled ride. A true work of performance art, the 370Z NISMO entices the eye with its 19" RAYS® forged alloy wheels, high downforce body, aggressive front and rear fascia, and rear diffuser.⁴

H-PIPE FREE-FLOW DUAL EXHAUST

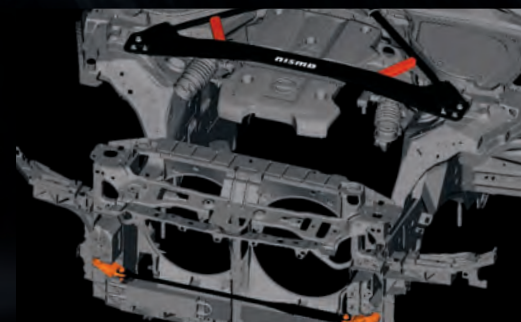
AERODYNAMICS AND DOWNFORCE

CHASSIS ENHANCEMENTS

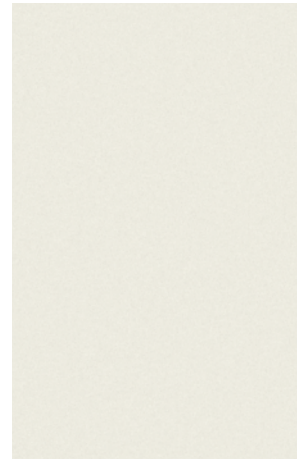
WHEELS BY RAYS®⁵

TUNED SUSPENSION AND BRAKES

SIGNATURE INTERIOR



CHOOSE YOUR COLOR



Pearl White⁶ QAB



Brilliant Silver⁷ K23

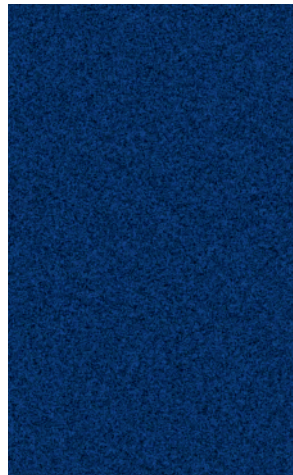


Gun Metallic⁷ KAD

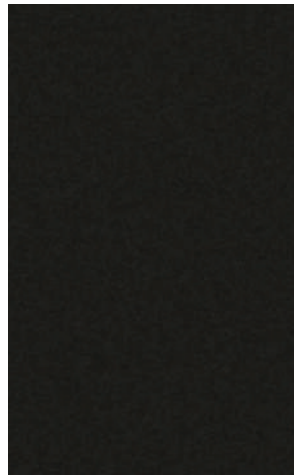
	370Z ⁸	SPORT ⁷	TOUR ⁸	SPORT TOUR ⁸	NISMO ⁹
BLACK CLOTH	<input checked="" type="checkbox"/>	<input checked="" type="checkbox"/>			
BLACK CLOTH WITH YELLOW TRIM ⁷	<input type="checkbox"/>				
BLACK LEATHER			<input checked="" type="checkbox"/>	<input checked="" type="checkbox"/>	
BLACK LEATHER/ RED ALCANTARA [®] INSERTS ⁷					<input checked="" type="checkbox"/>



Passion Red⁶ NBA



Deep Blue Pearl⁷ RAY



Magnetic Black G41

	370Z ⁸	SPORT ⁷	TOUR ⁸	SPORT TOUR ⁸	NISMO ⁹
BLACK CLOTH	<input checked="" type="checkbox"/>	<input checked="" type="checkbox"/>			
BLACK CLOTH WITH YELLOW TRIM ⁷	<input type="checkbox"/>				
BLACK LEATHER			<input checked="" type="checkbox"/>	<input checked="" type="checkbox"/>	
BLACK LEATHER/ RED ALCANTARA [®] INSERTS ⁷					<input checked="" type="checkbox"/>

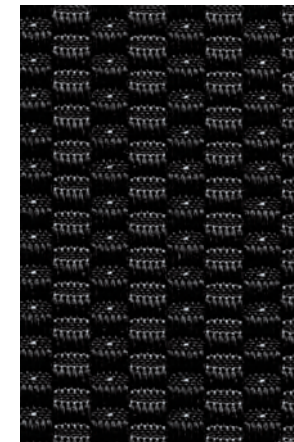
Standard
 Optional

Nissan has taken care to ensure that the color swatches presented here are the closest possible representations of actual vehicle colors. Swatches may vary slightly due to the printing process and whether viewed in daylight, fluorescent or incandescent light. Please see the actual colors at your dealer.

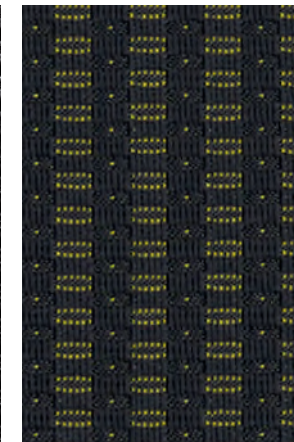
CHOOSE YOUR INTERIOR



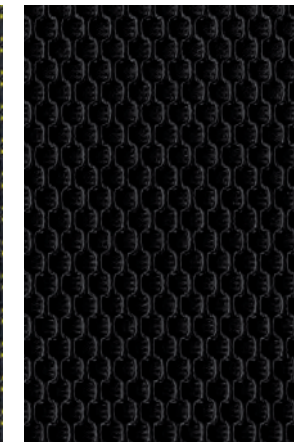
370Z⁸ Coupe Sport Touring shown in Black Leather.



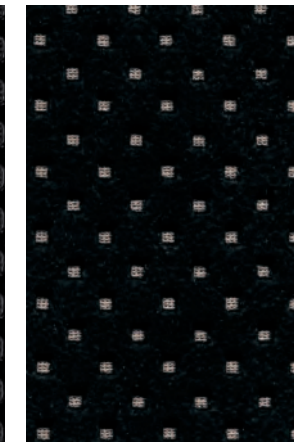
Black Cloth
Coupe | Roadster



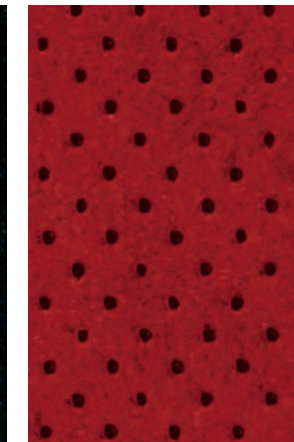
Black Cloth with Yellow Trim
Heritage Edition



Black Leather
Roadster



Black Leather
Coupe



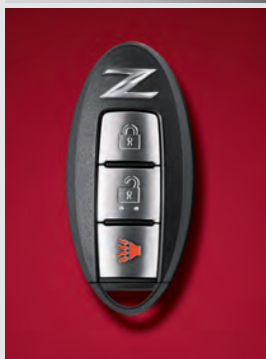
Black Leather/Red Alcantara[®] Inserts
NISMO

CHOOSE YOUR VERSION

COUPE

370Z®

- 332 hp, 270 lb-ft of torque
- 3.7-liter V6, twin-intake system
- 6-speed manual transmission
- Optional 7-speed automatic transmission with manual shift mode and Downshift Rev Matching
- EXEDY® high-performance clutch (manual transmission only)
- Sport-tuned shock absorbers
- 3-point front strut tower brace
- 18" Black-finish aluminum-alloy wheels
- Yokohama® ADVAN Sport® high-performance W-rated tires
- High Intensity Discharge (HID) bi-functional xenon headlights with smoked housing
- LED Daytime Running Lights
- Smoked LED taillights
- Z® fender emblems
- Smoked chrome door handles
- Bluetooth® Hands-free Phone System®
- Nissan Intelligent Key® with Push Button Ignition
- Upshift indicator light (manual transmission only)
- Auto-dimming rearview mirror
- RearView Monitor®
- Interior trunk release switch
- 8-way adjustable driver's seat
- 4-way adjustable passenger's seat
- Driver and passenger knee support
- Cloth seat trim
- AM/FM/CD audio system with six speakers
- USB port¹¹
- Six standard air bags¹²



370Z HERITAGE EDITION

INCLUDES 370Z EQUIPMENT PLUS:

- Heritage Edition exterior graphics
- Gloss black outside mirrors
- Yellow interior trim details
- Cloth seat with contrast yellow trim and bolster stitching
- Leather-wrapped steering wheel and shift knob with yellow trim



SPORT

INCLUDES 370Z EQUIPMENT PLUS:

- SynchroRev Match®
- Nissan sport brakes - 14.0" 4-piston front brakes/13.8" 2-piston rear brakes with red brake calipers
- Viscous Limited-slip Rear Differential
- 19" RAYS® forged alloy wheels
- Bridgestone® Potenza® S007 high-performance W-rated tires
- LED illuminated Z side marker emblems
- Front chin aero deflector
- Body-color rear spoiler
- Bose® Premium Audio System with eight speakers, including two subwoofers
- Active Noise Cancellation
- Active Sound Enhancement



SPORT TOURING

INCLUDES 370Z SPORT EQUIPMENT PLUS:

- Optional 7-speed automatic transmission with manual shift mode and Downshift Rev Matching
- Paddle shifters (automatic transmission only)
- Nissan Hard Drive Navigation System with touch-screen monitor and Voice Recognition¹⁵
- NavTraffic® and NavWeather® provided by SiriusXM®
- HomeLink® Universal Transceiver
- Rear cargo cover
- Driver's manual adjustable lumbar support
- Leather-appointed, power heated sport seats with synthetic suede inserts
- Aluminum-trimmed pedals
- Bluetooth® streaming audio⁹
- Active Noise Cancellation
- Active Sound Enhancement
- SiriusXM® Satellite Radio⁹



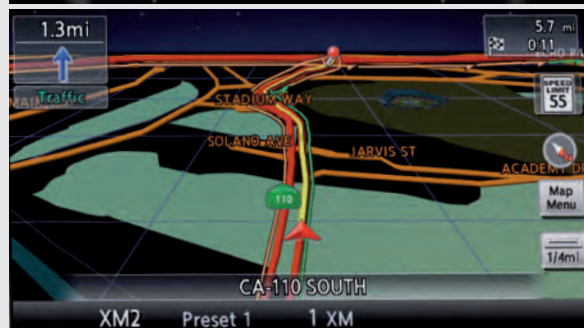
BOSE®

CHOOSE YOUR VERSION

NISMO®

NISMO INCLUDES 370Z® EQUIPMENT PLUS:

- 350 hp, 276 lb-ft torque, 3.7-liter V6
- NISMO-tuned free-flow dual exhaust with H-pipe configuration
- 6-speed manual transmission with SynchroRev Match®
- Black Magnesium paddle shifters (automatic transmission only)
- Viscous Limited-slip Rear Differential
- Nissan sport brakes – 14.0" 4-piston front brakes/13.8" 2-piston rear brakes with red brake calipers
- High-rigidity brake hoses and R35 Special II brake fluid
- NISMO-tuned suspension with increased spring, dampening, and stabilizer rates
- NISMO-reinforced 3-point front strut tower brace
- NISMO front and rear performance body dampers
- 19" NISMO forged alloy wheels by RAYS®
- Dunlop® SP Sport MAXX® GT600 high-performance Y-rated tires⁵
- NISMO aerodynamic body design – front and rear fascia, spoiler side sills, and rear spoiler
- Nissan Hard Drive Navigation System with touch-screen monitor and Voice Recognition¹³
- NavTraffic® and NavWeather® provided by SiriusXM®⁹
- HomeLink® Universal Transceiver
- NISMO tachometer
- NISMO Recaro® leather-appointed seats with Alcantara® inserts
- NISMO Alcantara®/leather-wrapped steering wheel and smooth leather-wrapped shift knob
- NISMO signature red interior stitching
- Bose® Premium Audio System with eight speakers, including two subwoofers
- Bluetooth® streaming audio⁹
- SiriusXM® Satellite Radio⁹
- Active Noise Cancellation
- Active Sound Enhancement



ROADSTER

370Z

- 332 hp, 270 lb-ft torque
- 3.7-liter V6, twin-intake system
- 7-speed automatic transmission with manual shift mode and Downshift Rev Matching
- Paddle shifters
- Sport-tuned shock absorbers
- 3-point front strut tower brace
- 18" Black-finish aluminum-alloy wheels
- Bridgestone® Potenza® RE050A high-performance W-rated tires
- High Intensity Discharge (HID) bi-functional xenon headlights with smoked housing
- LED Daytime Running Lights
- Smoked LED taillights
- LED illuminated Z® side marker emblems
- Smoked chrome door handles
- Power convertible soft-top with glass window
- Rear glass window deflector
- Power moving tonneau cover
- Bluetooth® Hands-free Phone System⁹
- Nissan Intelligent Key® with Push Button Ignition
- Auto-dimming rear view mirror
- RearView Monitor¹⁰
- 8-way adjustable driver's seat
- 4-way adjustable passenger's seat
- Driver and passenger knee support
- Cloth seat trim
- AM/FM/CD audio system with six speakers
- USB port¹¹
- Six standard air bags¹²



TOURING INCLUDES 370Z ROADSTER EQUIPMENT PLUS:

- Nissan Hard Drive Navigation System with touch-screen monitor and Voice Recognition¹³
- NavTraffic® and NavWeather® provided by SiriusXM®⁹
- HomeLink® Universal Transceiver
- Driver's manual adjustable lumbar support
- Ventilated, leather-appointed seats
- Climate-controlled seats (heated and cooled)
- Aluminum-trimmed pedals
- Bose® Premium Audio System with eight speakers, including two subwoofers
- Bluetooth® streaming audio⁹
- SiriusXM® Satellite Radio⁹

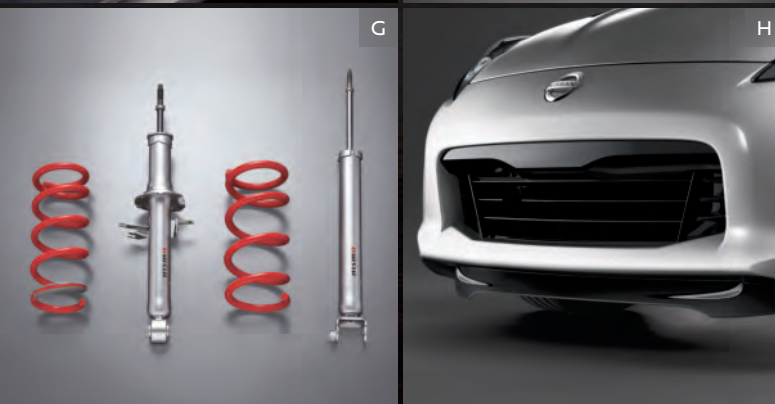
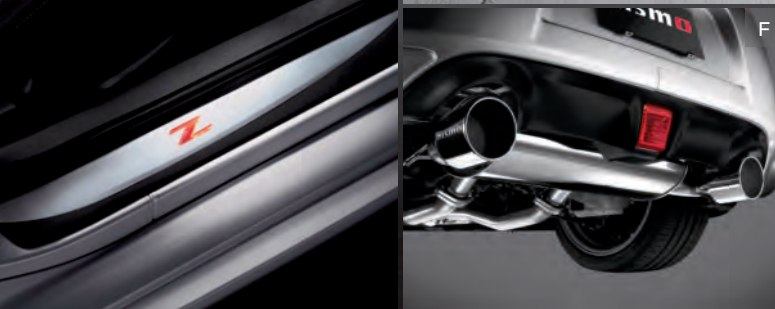
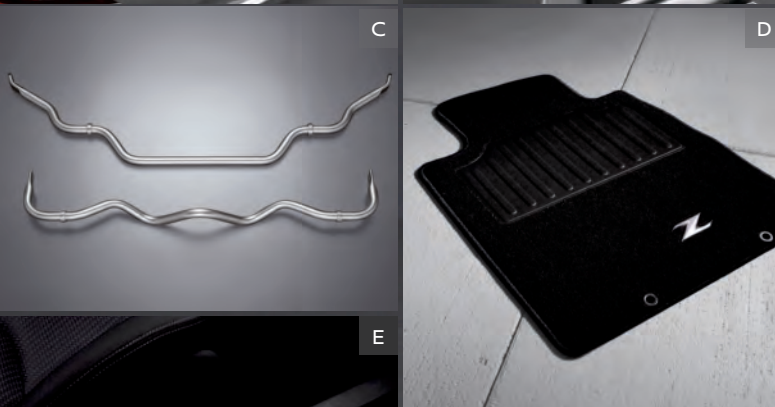


SPORT TOURING INCLUDES 370Z TOURING EQUIPMENT PLUS:

- Viscous Limited-slip Rear Differential
- Nissan sport brakes – 14.0" 4-piston front brakes/13.8" 2-piston rear brakes with red brake calipers
- 19" RAYS® forged alloy wheels
- Bridgestone® Potenza® S007 high-performance W-rated tires



CHOOSE YOUR ACCESSORIES



Every Genuine Nissan Accessory is custom-fit, custom-designed and durability-tested. Each one is backed by Nissan's 3-year/36,000-mile (whichever occurs first) limited warranty (if installed by dealer at the time of purchase), and can be financed when installed by dealer at time of purchase.¹⁴

A. Carpeted Trunk Mat

Help protect your trunk against wear and tear.

B. NISMO® Rear Decklid Spoiler

To the winner go the spoilers.

C. NISMO Suspension Stabilizer Kit

Quicker turn-in, less body lean, and more fun.

D. Carpeted Floor Mats

Preserve and protect in style.

E. Illuminated Kick Plates (2-piece set)

A grand entry every time you get in.

F. NISMO Cat-back Exhaust System

Rev up your experience with more aggressive sound.

G. NISMO Suspension Struts and Springs Kit

Take your handling to the next level.

H. Front Chin Aero Deflector

Less turbulence. More downforce. Aggression with purpose.

ADDITIONAL ACCESSORIES:

- Rear Decklid Spoiler
- Splash Guards
- NISMO Carpeted Floor Mats
- NISMO Brake Pads
- Nissan Valve Stem Caps
- Portable Cargo Organizer
- And More

GENUINE NISSAN ACCESSORIES

TAKE PART IN PUBLIC DISPLAYS OF AFFECTION

For more information and to shop online for 370Z® Genuine Nissan Accessories, go to bit.ly/19370Z-estore



Nissan 370Z® Coupe Sport shown in Brilliant Silver with Front Chin Aero Deflector (standard on Sport and Sport Touring trims), NISMO® Rear Decklid Spoiler, and NISMO® Graphics Kit.

SPECIFICATIONS

	370Z ^a	Sport ^c	Touring ^c	Sport Touring	NISMO ^c
Engine					
3.7-liter DOHC 24-valve V6 engine ¹⁵	<input checked="" type="checkbox"/>	<input checked="" type="checkbox"/>	<input checked="" type="checkbox"/>	<input checked="" type="checkbox"/>	<input checked="" type="checkbox"/>
—Horsepower – 332 hp @ 7,000 rpm	<input checked="" type="checkbox"/>	<input checked="" type="checkbox"/>	<input checked="" type="checkbox"/>	<input checked="" type="checkbox"/>	<input checked="" type="checkbox"/>
—350 hp @ 7,400 rpm					<input checked="" type="checkbox"/>
—Torque – 270 lb.-ft. @ 5,200 rpm	<input checked="" type="checkbox"/>	<input checked="" type="checkbox"/>	<input checked="" type="checkbox"/>	<input checked="" type="checkbox"/>	<input checked="" type="checkbox"/>
—276 lb.-ft. @ 5,200 rpm					<input checked="" type="checkbox"/>
—Bore x stroke – 95.5 x 86.0 mm	<input checked="" type="checkbox"/>	<input checked="" type="checkbox"/>	<input checked="" type="checkbox"/>	<input checked="" type="checkbox"/>	<input checked="" type="checkbox"/>
—Compression ratio – 11.1:1	<input checked="" type="checkbox"/>	<input checked="" type="checkbox"/>	<input checked="" type="checkbox"/>	<input checked="" type="checkbox"/>	<input checked="" type="checkbox"/>
—Maximum engine speed – 7,500 rpm	<input checked="" type="checkbox"/>	<input checked="" type="checkbox"/>	<input checked="" type="checkbox"/>	<input checked="" type="checkbox"/>	<input checked="" type="checkbox"/>
Continuously Variable Valve Timing Control System (CVTCS) with Variable Valve Event and Lift (VVEL [®]) on intake valves	<input checked="" type="checkbox"/>	<input checked="" type="checkbox"/>	<input checked="" type="checkbox"/>	<input checked="" type="checkbox"/>	<input checked="" type="checkbox"/>
Twin-intake system	<input checked="" type="checkbox"/>	<input checked="" type="checkbox"/>	<input checked="" type="checkbox"/>	<input checked="" type="checkbox"/>	<input checked="" type="checkbox"/>
Nissan Direct Ignition System with iridium-tipped spark plugs	<input checked="" type="checkbox"/>	<input checked="" type="checkbox"/>	<input checked="" type="checkbox"/>	<input checked="" type="checkbox"/>	<input checked="" type="checkbox"/>
Electronic drive-by-wire throttle	<input checked="" type="checkbox"/>	<input checked="" type="checkbox"/>	<input checked="" type="checkbox"/>	<input checked="" type="checkbox"/>	<input checked="" type="checkbox"/>
NISMO-tuned free-flow dual exhaust with H-pipe configuration					<input checked="" type="checkbox"/>

Drivetrain					
Longitudinally mid-mounted front engine/Rear-Wheel Drive	<input checked="" type="checkbox"/>	<input checked="" type="checkbox"/>	<input checked="" type="checkbox"/>	<input checked="" type="checkbox"/>	<input checked="" type="checkbox"/>
Carbon-fiber composite driveshaft	<input checked="" type="checkbox"/>	<input checked="" type="checkbox"/>	<input checked="" type="checkbox"/>	<input checked="" type="checkbox"/>	<input checked="" type="checkbox"/>
6-speed close-ratio manual transmission ⁷	<input checked="" type="checkbox"/>	<input checked="" type="checkbox"/>	<input checked="" type="checkbox"/>	<input checked="" type="checkbox"/>	<input checked="" type="checkbox"/>
SynchroRev Match ^{®7,16}		<input checked="" type="checkbox"/>		<input checked="" type="checkbox"/>	<input checked="" type="checkbox"/>
7-speed automatic transmission with manual shift mode and Downshift Rev Matching	<input type="checkbox"/> ⁷ <input checked="" type="checkbox"/> ⁸		<input checked="" type="checkbox"/>	<input type="checkbox"/> ⁷ <input checked="" type="checkbox"/> ⁸	<input type="checkbox"/>
Paddle shifters ¹⁷	<input checked="" type="checkbox"/> ⁸		<input checked="" type="checkbox"/>	<input type="checkbox"/> ⁷ <input checked="" type="checkbox"/> ⁸	<input type="checkbox"/>
Black Magnesium paddle shifters ¹⁷					<input type="checkbox"/>
EXEDY [®] high-performance clutch ^{7,16}	<input checked="" type="checkbox"/>	<input checked="" type="checkbox"/>		<input checked="" type="checkbox"/>	<input checked="" type="checkbox"/>
Viscous Limited-slip Rear Differential		<input checked="" type="checkbox"/>		<input checked="" type="checkbox"/> ⁷	<input checked="" type="checkbox"/>

Brakes					
12.6" x 1.10" vented front discs and 12.1" x 0.63" vented rear discs	<input checked="" type="checkbox"/>		<input checked="" type="checkbox"/>		
Nissan sport brakes – 4-piston opposed aluminum calipers with 14.0" x 1.30" vented front discs and 2-piston opposed aluminum calipers with 13.8" x 0.80" vented rear discs		<input checked="" type="checkbox"/>		<input checked="" type="checkbox"/>	<input checked="" type="checkbox"/>
High-rigidity brake hoses and R35 Special II brake fluid					<input checked="" type="checkbox"/>
4-wheel Anti-lock Braking System (ABS)	<input checked="" type="checkbox"/>	<input checked="" type="checkbox"/>	<input checked="" type="checkbox"/>	<input checked="" type="checkbox"/>	<input checked="" type="checkbox"/>
Electronic Brake force Distribution (EBD)	<input checked="" type="checkbox"/>	<input checked="" type="checkbox"/>	<input checked="" type="checkbox"/>	<input checked="" type="checkbox"/>	<input checked="" type="checkbox"/>
Brake Assist ¹⁸	<input checked="" type="checkbox"/>	<input checked="" type="checkbox"/>	<input checked="" type="checkbox"/>	<input checked="" type="checkbox"/>	<input checked="" type="checkbox"/>

Suspension/Chassis Bracing/Steering					
2-link double-wishbone aluminum-alloy front suspension with aluminum subframe	<input checked="" type="checkbox"/>	<input checked="" type="checkbox"/>	<input checked="" type="checkbox"/>	<input checked="" type="checkbox"/>	<input checked="" type="checkbox"/>
4-link aluminum-alloy rear suspension	<input checked="" type="checkbox"/>	<input checked="" type="checkbox"/>	<input checked="" type="checkbox"/>	<input checked="" type="checkbox"/>	<input checked="" type="checkbox"/>
Front and rear stabilizer bars	<input checked="" type="checkbox"/>	<input checked="" type="checkbox"/>	<input checked="" type="checkbox"/>	<input checked="" type="checkbox"/>	<input checked="" type="checkbox"/>
Sport-tuned shock absorbers	<input checked="" type="checkbox"/>	<input checked="" type="checkbox"/>	<input checked="" type="checkbox"/>	<input checked="" type="checkbox"/>	<input checked="" type="checkbox"/>
NISMO-tuned suspension with increased spring, dampening, and stabilizer rates					<input checked="" type="checkbox"/>
3-point front strut tower brace	<input checked="" type="checkbox"/>	<input checked="" type="checkbox"/>	<input checked="" type="checkbox"/>	<input checked="" type="checkbox"/>	
NISMO reinforced 3-point front strut tower brace					<input checked="" type="checkbox"/>
Rear underbody V-brace	<input checked="" type="checkbox"/>	<input checked="" type="checkbox"/>	<input checked="" type="checkbox"/>	<input checked="" type="checkbox"/>	<input checked="" type="checkbox"/>
NISMO front and rear performance body dampers					<input checked="" type="checkbox"/>

Wheels/Tires	370Z ^a	Sport ^c	Touring ^c	Sport Touring	NISMO ^c
18" x 8.0" (front)/18" x 9.0" (rear) black-finish aluminum-alloy wheels	<input checked="" type="checkbox"/>		<input checked="" type="checkbox"/>		
19" x 9.0" (front)/19" x 10.0" (rear) forged alloy wheels by RAYS [®]		<input checked="" type="checkbox"/>		<input checked="" type="checkbox"/>	
19" x 9.5" (front)/19" x 10.5" (rear) NISMO forged alloy wheels by RAYS [®]					<input checked="" type="checkbox"/>
225/50WR18 (front) and 245/45WR18 (rear) Yokohama [®] ADVAN Sport [®] high-performance tires ⁷	<input checked="" type="checkbox"/>				
225/50WR18 (front) and 245/45WR18 (rear) Bridgestone [®] Potenza [®] RE050A high-performance tires ⁸	<input checked="" type="checkbox"/>		<input checked="" type="checkbox"/>		
245/40WR19 (front) and 275/35WR19 (rear) Bridgestone [®] Potenza [®] S007 high-performance tires		<input checked="" type="checkbox"/>		<input checked="" type="checkbox"/>	
245/40YR19 (front) and 285/35YR19 (rear) Dunlop [®] SP Sport MAXX [®] GT600 high-performance tires					<input checked="" type="checkbox"/>

Exterior Features					
Automatic on/off headlights	<input checked="" type="checkbox"/>	<input checked="" type="checkbox"/>	<input checked="" type="checkbox"/>	<input checked="" type="checkbox"/>	<input checked="" type="checkbox"/>
High Intensity Discharge (HID) bi-functional xenon headlights with smoked housing	<input checked="" type="checkbox"/>	<input checked="" type="checkbox"/>	<input checked="" type="checkbox"/>	<input checked="" type="checkbox"/>	<input checked="" type="checkbox"/>
LED Daytime Running Lights	<input checked="" type="checkbox"/>	<input checked="" type="checkbox"/>	<input checked="" type="checkbox"/>	<input checked="" type="checkbox"/>	<input checked="" type="checkbox"/>
Smoked LED taillights	<input checked="" type="checkbox"/>	<input checked="" type="checkbox"/>	<input checked="" type="checkbox"/>	<input checked="" type="checkbox"/>	<input checked="" type="checkbox"/>
Z [®] fender emblems	<input checked="" type="checkbox"/>				
LED illuminated Z side marker emblems	<input checked="" type="checkbox"/> ⁷	<input checked="" type="checkbox"/>	<input checked="" type="checkbox"/>	<input checked="" type="checkbox"/>	<input checked="" type="checkbox"/>
Smoked chrome door handles	<input checked="" type="checkbox"/> ⁸	<input checked="" type="checkbox"/>	<input checked="" type="checkbox"/>	<input checked="" type="checkbox"/>	<input checked="" type="checkbox"/>
Front chin aero deflector ⁷				<input checked="" type="checkbox"/>	
Body-color rear spoiler ⁷		<input checked="" type="checkbox"/>		<input checked="" type="checkbox"/>	
NISMO aerodynamic body design – front and rear fascia, spoiler, side sills and rear spoiler					<input checked="" type="checkbox"/>
Heritage Edition exterior graphics	H				
Aluminum hood, doors and hatch ⁷ /trunk ⁸	<input checked="" type="checkbox"/>	<input checked="" type="checkbox"/>	<input checked="" type="checkbox"/>	<input checked="" type="checkbox"/>	<input checked="" type="checkbox"/>
Heated outside mirrors	<input checked="" type="checkbox"/> ⁸	<input checked="" type="checkbox"/>	<input checked="" type="checkbox"/>	<input checked="" type="checkbox"/>	<input checked="" type="checkbox"/>
Gloss black outside mirrors	H				
Power convertible soft-top with glass window ⁸	<input checked="" type="checkbox"/>		<input checked="" type="checkbox"/>	<input checked="" type="checkbox"/>	
Rear wind deflector and power moving tonneau cover ⁸	<input checked="" type="checkbox"/>		<input checked="" type="checkbox"/>	<input checked="" type="checkbox"/>	

Comfort/Convenience					
Nissan Hard Drive Navigation System with 7.0" VGA touch-screen monitor and voice recognition ¹³			<input checked="" type="checkbox"/>	<input checked="" type="checkbox"/>	<input checked="" type="checkbox"/>
NavTraffic [®] and NavWeather [®] provided by SiriusXM ^{®9}			<input checked="" type="checkbox"/>	<input checked="" type="checkbox"/>	<input checked="" type="checkbox"/>
RearView Monitor ¹⁰	<input checked="" type="checkbox"/>	<input checked="" type="checkbox"/>	<input checked="" type="checkbox"/>	<input checked="" type="checkbox"/>	<input checked="" type="checkbox"/>
Automatic Temperature Control	<input checked="" type="checkbox"/>	<input checked="" type="checkbox"/>	<input checked="" type="checkbox"/>	<input checked="" type="checkbox"/>	<input checked="" type="checkbox"/>
Bluetooth [®] Hands-free Phone System ⁹	<input checked="" type="checkbox"/>	<input checked="" type="checkbox"/>	<input checked="" type="checkbox"/>	<input checked="" type="checkbox"/>	<input checked="" type="checkbox"/>
3-bay gauge cluster (oil temperature, voltmeter and digital clock)	<input checked="" type="checkbox"/>	<input checked="" type="checkbox"/>	<input checked="" type="checkbox"/>	<input checked="" type="checkbox"/>	<input checked="" type="checkbox"/>
Upshift indicator light ¹⁶	<input checked="" type="checkbox"/> ⁷	<input checked="" type="checkbox"/>		<input checked="" type="checkbox"/>	<input checked="" type="checkbox"/>
NISMO tachometer					<input checked="" type="checkbox"/>
Nissan Intelligent Key [®] with Push Button Ignition	<input checked="" type="checkbox"/>	<input checked="" type="checkbox"/>	<input checked="" type="checkbox"/>	<input checked="" type="checkbox"/>	<input checked="" type="checkbox"/>
HomeLink [®] Universal Transceiver	<input checked="" type="checkbox"/>		<input checked="" type="checkbox"/>	<input checked="" type="checkbox"/>	<input checked="" type="checkbox"/>
Auto-dimming rearview mirror	<input checked="" type="checkbox"/>	<input checked="" type="checkbox"/>	<input checked="" type="checkbox"/>	<input checked="" type="checkbox"/>	<input checked="" type="checkbox"/>
Interior trunk release switch ⁷		<input checked="" type="checkbox"/>		<input checked="" type="checkbox"/>	<input checked="" type="checkbox"/>
Tilt steering column with integrated gauges	<input checked="" type="checkbox"/>	<input checked="" type="checkbox"/>	<input checked="" type="checkbox"/>	<input checked="" type="checkbox"/>	<input checked="" type="checkbox"/>
Rear cargo cover			<input checked="" type="checkbox"/>	<input checked="" type="checkbox"/>	<input checked="" type="checkbox"/>

Seating/Appointments	370Z ^a	Sport ^c	Touring ^c	Sport Touring	NISMO ^c
8-way adjustable driver's seat	<input checked="" type="checkbox"/>	<input checked="" type="checkbox"/>	<input checked="" type="checkbox"/>	<input checked="" type="checkbox"/>	<input checked="" type="checkbox"/>
Driver's manual adjustable lumbar support			<input checked="" type="checkbox"/>	<input checked="" type="checkbox"/>	
4-way adjustable passenger's seat	<input checked="" type="checkbox"/>	<input checked="" type="checkbox"/>	<input checked="" type="checkbox"/>	<input checked="" type="checkbox"/>	<input checked="" type="checkbox"/>
Power seats			<input checked="" type="checkbox"/>	<input checked="" type="checkbox"/>	
Heated seats ⁷				<input checked="" type="checkbox"/>	
Climate-controlled seats (heated and cooled) ⁸			<input checked="" type="checkbox"/>	<input checked="" type="checkbox"/>	
Driver and passenger knee support	<input checked="" type="checkbox"/>	<input checked="" type="checkbox"/>			
Cloth seat trim					
Cloth seats with contrast yellow trim and bolster stitching	H				
Leather-appointed sport seats with synthetic suede inserts ⁷				<input checked="" type="checkbox"/>	
Ventilated leather-appointed sport seats ⁸			<input checked="" type="checkbox"/>	<input checked="" type="checkbox"/>	
NISMO Recaro [®] leather-appointed seats with Alcantara [®] inserts					<input checked="" type="checkbox"/>
Synthetic suede door panel inserts			<input checked="" type="checkbox"/>	<input checked="" type="checkbox"/>	
Leather-wrapped steering wheel and shift knob	<input checked="" type="checkbox"/>	<input checked="" type="checkbox"/>	<input checked="" type="checkbox"/>	<input checked="" type="checkbox"/>	
Leather-wrapped steering wheel and shift knob with yellow trim	H				
NISMO Alcantara [®] /leather-wrapped steering wheel and smooth leather-wrapped shift knob					<input checked="" type="checkbox"/>
Aluminum-trimmed pedals			<input checked="" type="checkbox"/>	<input checked="" type="checkbox"/>	<input checked="" type="checkbox"/>
Heritage Edition interior trim details	H				
NISMO signature red interior stitching					<input checked="" type="checkbox"/>

Audio/Entertainment					
AM/FM/CD audio system with six speakers	<input checked="" type="checkbox"/>				
Bose [®] Premium Audio System with eight speakers, including two subwoofers		<input checked="" type="checkbox"/>	<input checked="" type="checkbox"/>	<input checked="" type="checkbox"/>	<input checked="" type="checkbox"/>
Active Noise Cancellation ⁷		<input checked="" type="checkbox"/>		<input checked="" type="checkbox"/>	<input checked="" type="checkbox"/>
Active Sound Enhancement ⁷			<input checked="" type="checkbox"/>	<input checked="" type="checkbox"/>	<input checked="" type="checkbox"/>
DVD video playback capability			<input checked="" type="checkbox"/>	<input checked="" type="checkbox"/>	<input checked="" type="checkbox"/>
Auxiliary audio input jack ¹¹	<input checked="" type="checkbox"/>	<input checked="" type="checkbox"/>			
Auxiliary audio/video input jacks ¹¹			<input checked="" type="checkbox"/>	<input checked="" type="checkbox"/>	<input checked="" type="checkbox"/>
USB port ¹¹	<input checked="" type="checkbox"/>	<input checked="" type="checkbox"/>	<input checked="" type="checkbox"/>	<input checked="" type="checkbox"/>	<input checked="" type="checkbox"/>
Bluetooth [®] streaming audio ⁹			<input checked="" type="checkbox"/>	<input checked="" type="checkbox"/>	<input checked="" type="checkbox"/>
SiriusXM [®] Satellite Radio ⁹			<input checked="" type="checkbox"/>	<input checked="" type="checkbox"/>	<input checked="" type="checkbox"/>
Speed-sensitive volume control			<input checked="" type="checkbox"/>	<input checked="" type="checkbox"/>	<input checked="" type="checkbox"/>

Safety/Security					
Nissan Advanced Air Bag System with dual-stage supplemental front air bags with seat belt and occupant classification sensors ¹²	<input checked="" type="checkbox"/>	<input checked="" type="checkbox"/>	<input checked="" type="checkbox"/>	<input checked="" type="checkbox"/>	<input checked="" type="checkbox"/>
Driver and passenger seat-mounted side-impact supplemental air bags ¹²	<input checked="" type="checkbox"/>	<input checked="" type="checkbox"/>	<input checked="" type="checkbox"/>	<input checked="" type="checkbox"/>	<input checked="" type="checkbox"/>
Roof-mounted curtain side-impact supplemental air bags for occupants head protection ^{7,12}	<input checked="" type="checkbox"/>	<input checked="" type="checkbox"/>		<input checked="" type="checkbox"/>	<input checked="" type="checkbox"/>
Door-mounted curtain side-impact supplemental air bags for occupants head protection ^{8,12}	<input checked="" type="checkbox"/>		<input checked="" type="checkbox"/>	<input checked="" type="checkbox"/>	
Vehicle Dynamic Control (VDC) ¹⁹ with Traction Control System (TCS)	<input checked="" type="checkbox"/>	<input checked="" type="checkbox"/>	<input checked="" type="checkbox"/>	<input checked="" type="checkbox"/>	<input checked="" type="checkbox"/>
Active Head Restraints	<input checked="" type="checkbox"/>	<input checked="" type="checkbox"/>	<input checked="" type="checkbox"/>	<input checked="" type="checkbox"/>	
Tire Pressure Monitoring System (TPMS) ²⁰	<input checked="" type="checkbox"/>	<input checked="" type="checkbox"/>	<input checked="" type="checkbox"/>	<input checked="" type="checkbox"/>	<input checked="" type="checkbox"/>
Upper and lower top tether anchors ⁷	<input checked="" type="checkbox"/>	<input checked="" type="checkbox"/>		<input checked="" type="checkbox"/>	<input checked="" type="checkbox"/>

DIMENSIONS/WEIGHTS/MPG

Dimensions – Inches	
Exterior	
Wheelbase	100.4
Overall length	167.5 (170.5 NISMO [®])
Overall width	72.6 (73.6 NISMO [®])
Overall height	51.8 (up to 52.2 on Roadster)
Track width (front/rear)	
—18" Aluminum-alloy wheels	61.0/62.8
—19" RAYS [®] forged wheels	60.6/61.6
—19" NISMO [®] /RAYS [®] forged wheels	61.2/62.2

Aerodynamics – Cd	
Drag coefficient	.30 on Coupe and NISMO, .29 for Sport trims
	.33 on Roadster, .34 for Sport trim

Interior	
Head room	38.2 (38.7 on Roadster)
Leg room	42.9
Shoulder room	54.4

Curb Weights				
Coupe	370Z[®]	Sport	Sport Touring	NISMO[®]
Manual transmission	3,333	3,386	3,417	3,457
Automatic transmission	3,362	–	3,439	3,486

Roadster	370Z[®]	Touring	Sport Touring
Manual transmission	–	–	–
Automatic transmission	3,479	3,497	3,525

2019 EPA Fuel Economy Estimates			
City/Hwy/Combined MPG	Coupe	Roadster	
Manual transmission	17/26/20	–	
Automatic transmission	19/26/22	18/25/21	
	<small>Fuel economy based on 2019 EPA fuel economy estimates. EPA data not available at time of publication. Actual mileage may vary with driving conditions – use for comparison only.</small>		

NISSAN ROADSIDE ASSISTANCE

Your peace of mind is on us. For 36 months or 36,000 miles, whichever comes first, your new Nissan is covered for the following:²¹

- Flat-tire changes
- Trip Interruption benefits
- Vehicle lockouts
- Emergency fuel delivery
- Jump starts

Follow Nissan on:



visit NissanUSA.com/z

Standard

Optional

H Part of Heritage Edition Package