



Nissan Intelligent Mobility moves you one step ahead. In cars that feel like an extension of you, helping you see more and sense more, reacting with you, and sometimes even for you. Nissan Intelligent Mobility is about a better future – moving through life with greater confidence, excitement and connection to the world around you.



MURANO®

2022



¹Driving is serious business and requires your full attention. If you have to use the connected device while driving, exercise extreme caution at all times so full attention may be given to vehicle operation. ²Leather appointments. ³Intelligent All-Wheel Drive cannot prevent collisions or provide enhanced traction in all conditions. Always monitor traffic and weather conditions. ⁴2022 EPA Fuel Economy Estimates, 20 City MPG / 28 Highway MPG / 23 Combined MPG for Murano. Actual mileage may vary with driving conditions. Use for comparison only. ⁵Use feature only when safe and legal. Compatible device and service required. Subject to third party service availability. For more information see [NissanUSA.com/connect/legal](https://www.nissanusa.com/connect/legal). ⁶Use Hands Free Text Messaging when parked in a safe location. If you must use while driving, monitor traffic conditions and keep both hands on the steering wheel to prevent collisions. Compatible device required. Message and data rates may apply. ⁷Never program while driving. GPS mapping may not be detailed in all areas or reflect current road status. ⁸Availability of features vary by vehicle model year, model, trim level, packaging, and options. Please see Owner's Manual for important feature information. ⁹Nissan Safety Shield technologies can't prevent all collisions or warn in all situations. See Owner's Manual for important safety information. ¹⁰Automatic Emergency Braking with Pedestrian Detection cannot prevent all collisions and may not provide warning or braking in all conditions. Driver should monitor traffic conditions and brake as needed to prevent collisions. See Owner's Manual for safety information. ¹¹Rear Automatic Braking cannot prevent all collisions and may not provide warning or braking in all conditions. Driver should always turn and check surroundings before driving and brake as needed to prevent collisions. See Owner's Manual for safety information. ¹²Rear Cross Traffic Alert may not detect all vehicles. See Owner's Manual for safety information. ¹³Blind Spot Warning cannot prevent collisions and may not detect every object or warn in all situations. Driver should always turn and look before changing lanes. See Owner's Manual for safety information. ¹⁴Lane Departure Warning and Intelligent Lane Intervention only operate when lane markings are detectable. See Owner's Manual for safety information. ¹⁵Cargo shown for display purposes only. Cargo and load capacity limited by weight and distribution. Always secure cargo. Heavy loading of the vehicle with cargo, especially on the roof, will affect the handling and stability of the vehicle. ¹⁶Intelligent Around View® Monitor cannot eliminate blind spots and may not detect every object. Driver should always turn and check surroundings before driving. See Owner's Manual for safety information. ¹⁷Virtual composite 360° view. ¹⁸Extra cost option. ¹⁹Intelligent Forward Collision Warning cannot prevent collisions. See Owner's Manual for safety information. ²⁰RearView Monitor may not detect every object and does not eliminate blind spots or warn of moving objects. See Owner's Manual for safety information. ²¹Sonar System may not detect every object. Driver should always check surroundings before driving. See Owner's Manual for safety information. ²²Vehicle Dynamic Control cannot prevent collisions due to abrupt steering, carelessness, or dangerous driving techniques. It should remain on when driving, except when freeing the vehicle from mud or snow. See Owner's Manual for safety information. ²³Intelligent Driver Alertness cannot provide a warning in every situation. See Owner's Manual for safety information. ²⁴Rear Door Alert System does not detect people or cargo. Always check rear seat before exiting. See Owner's Manual for safety information. ²⁵Do not ride in a moving vehicle when the seatback is reclined. For the most effective protection, the seat should be upright. See Owner's Manual for safety information. ²⁶Information displayed is dependent on how vehicle is equipped. Driving is serious business and requires your full attention. If you have to use the feature while driving, exercise extreme caution at all times so full attention may be given to vehicle operation. ²⁷Air bags are only a supplemental restraint system. Always wear your seat belt. Rear-facing child restraints should not be placed in the front-passenger's seat. All children 12 and under should ride in the rear seat properly secured in child restraints, booster seats, or seat belts according to their size. Air bags will only inflate in certain accidents. See Owner's Manual for safety information. ²⁸Intelligent Cruise Control uses limited braking and is not a collision avoidance or warning system. Driver should monitor traffic conditions and brake as needed to prevent collisions. See Owner's Manual for safety information. ²⁹Remote Engine Start System to be used only in accordance with any laws or rules in effect in your vehicle's location. ³⁰Traffic Sign Recognition may not detect and read all traffic signs in all conditions. Driver should monitor all traffic signs and obey all traffic laws. See Owner's Manual for details. ³¹Genuine Nissan Accessories are covered by Nissan's Limited Warranty on Genuine Nissan Replacement Parts, Genuine NISMO® S-Tune Parts, and Genuine Nissan Accessories for the longer of 12 months/12,000 miles (whichever occurs first) or the remaining period under the 3-year/36,000-mile (whichever occurs first) Nissan New Vehicle Limited Warranty. Terms and conditions apply. See dealer, Warranty Information Booklet, or [parts.NissanUSA.com](https://www.nissanusa.com/parts) for details. ³²Genuine Nissan Accessory Roof Rail Crossbars have a maximum weight limit of 100 lbs. ³³Affiliated Yakima® accessories are not warranted by Nissan. Refer to product manufacturer for warranty details. Nissan Limited Warranty does not cover damages or failures to the vehicle caused by improper installation or alterations of any Nissan-approved accessory or component. Contact your dealer/retailer for details. ³⁴Vehicle shown is for illustrative purposes only. Not representative of brochure's model year/model. ³⁵Towing varies by configuration. See Nissan Towing Guide and Owner's Manual for additional information. Always secure cargo. ³⁶Brake Assist cannot prevent all collisions and may not provide warning or braking in all conditions. Driver should monitor traffic conditions and brake as needed to prevent collisions. See Owner's Manual for safety information. ³⁷Tire Pressure Monitoring System is not a substitute for regular tire pressure checks. See Owner's Manual for safety information. ³⁸Vehicle must be on for the Easy-Fill Tire Alert to operate. ³⁹Roadside assistance coverage period varies by model-year model. For complete information concerning warranty coverage, conditions and exclusions, see your Nissan dealer and read the warranty information booklet for the model-year model. Google, Android, Google Play, Android Auto and other marks are trademarks of Google LLC. Google Assistant is not available in certain languages and countries. To use Android Auto on your car display, you'll need an Android phone running Android 6 or higher, an active data plan, and the Android Auto app. Apple CarPlay® and Apple Music® are registered trademarks of Apple, Inc. Bluetooth® is a registered trademark of Bluetooth SIG, Inc. Bose® is a registered trademark of The Bose Corporation. ChromaFlair® is a registered trademark of Optical Coating Laboratory, LLC. Facebook® is a registered trademark of Facebook, Inc. HomeLink® is a registered trademark of Gentex Corporation. iPhone® is a registered trademark of Apple, Inc. All rights reserved. iPhone® or other external device not included. Siri® and Siri® Eyes Free are registered trademarks of Apple, Inc. The Sirius®, XM®, and SiriusXM® names and all related marks and logos are trademarks of Sirius XM Radio Inc. Twitter® is a registered trademark of Twitter, Inc. Yakima® is a registered trademark of Yakima Products, Inc. This brochure is intended for general descriptive and informational purposes only. It is subject to change and does not constitute an offer, representation or warranty (express or implied) by Nissan North America, Inc. Interested parties should confirm the accuracy of any information in this brochure as it relates to a vehicle directly with Nissan North America, Inc., before relying on it to make a purchase decision. Nissan North America, Inc., reserves the right to make changes, at any time, without prior notice, in prices, colors, materials, equipment, specifications, and models and to discontinue models or equipment. Due to continuous product development and other pre- and post-production factors, actual vehicle, materials and specifications may vary from this brochure. Some vehicles shown with optional equipment. See the actual vehicle for complete accuracy. Availability and delivery times for particular models or equipment may vary. Specifications, options and accessories may differ in Hawaii, U.S. territories and other countries. For additional information on availability, options or accessories, see your Nissan dealer or contact Nissan North America, Inc. At [NissanUSA.com](https://www.nissanusa.com), you'll find virtual product demonstrations, a way to "build your own Nissan," a dealer locator, and more information about key Nissan support services. Or if you'd prefer, call **1-800-NISSAN-3** for answers to specific questions about Murano® or any other Nissan vehicle. The Nissan names, logos, product names, feature names, and slogans are trademarks owned by or licensed to Nissan Motor Co. Ltd. and/or its North American subsidiaries. Other trademarks and trade names are those of their respective owners. **Always wear your seat belt, and please drive responsibly.** ©2022 Nissan North America, Inc. ²² Murano®, 2205821-N-9/21-60K-KSL

Your life deserves a more exciting crossover

Good is fitting in. Great is standing out in a ride that goes way beyond eye candy. It's all-season power and instant connectivity.¹ This is a crossover that moves you like never before. This is the Nissan Murano®.

NISSAN
INTELLIGENT
MOBILITY™



Nissan Murano® Platinum AWD shown in Deep Blue Pearl.



Available Heated Front and Rear Outboard Seats

Available Semi-aniline Leather Appointments

Available Dark Wood Finishes

Front and Rear USB-C Ports¹

Nissan Murano® Platinum AWD shown in Cashmere Semi-aniline Leather.²



Design is in our DNA

It's what inspires us, beginning with available dark wood-toned finishes and semi-aniline leather-appointed seats. Emotion is further illuminated by the available Dual Panel Panoramic Moonroof that lets in natural light, providing a large view above. And with front and rear USB-C ports, everyone can enjoy fast charging.¹



Intelligent All-Wheel Drive

Murano's available Intelligent All-Wheel Drive adapts to changing conditions, helping you get a better grip for the situation.³ The system can automatically switch from 2-wheel to 4-wheel and back, for optimal fuel efficiency and confidence on the road.⁴



Standard Nissan Safety Shield® 360

Imagine feeling confident in most any situation. With a suite of six standard Safety Shield 360 technologies, the Nissan Murano helps look out for you all around. This is additional peace of mind you can enjoy with every 2022 Murano.^{8, 9}

- | | | | | | |
|---|--------------------------------------|--|----------------------------------|--------------------------------------|------------------|
| Automatic Emergency Braking with Pedestrian Detection ¹⁰ | Rear Automatic Braking ¹¹ | Rear Cross Traffic Alert ¹² | Blind Spot Warning ¹³ | Lane Departure Warning ¹⁴ | High Beam Assist |
|---|--------------------------------------|--|----------------------------------|--------------------------------------|------------------|



Seamless connectivity

People to see? Places to be? Just ask Siri.® Equipped with Siri® voice control, Apple CarPlay® brings your contacts, favorite messaging apps, Apple Music® playlists, Apple Maps, and more on board to your Murano.® Simply plug in your compatible iPhone® and go.^{1, 5}



Talk to Google on Android Auto™ and get things done with your voice so you can keep your focus on driving. Easily send messages, get directions, control media and more. Just say, "Hey Google" or, in compatible cars, long-press the voice control button on your steering wheel to get started.^{5, 6, 7}



Motion Activated Liftgate

Hands full? Just kick under the rear bumper to open the available Motion Activated Liftgate, without reaching for a key or juggling whatever you're carrying.



Intelligent Around View® Monitor

Keep your pride and rims intact. The available Intelligent Around View® Monitor makes parking easy with a virtual composite 360° bird's-eye view of your Murano. You can select from split-screen close-ups of the front, rear, and curbside views for a better look. It also gives you an on-screen warning when it detects moving objects near your vehicle. We're looking at you, shopping cart.^{16, 17}

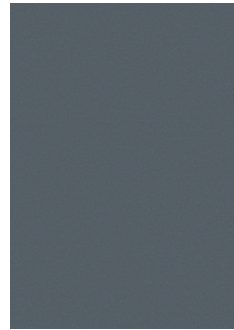
CHOOSE YOUR COLOR

Pearl White TriCoat¹⁸

Brilliant Silver Metallic



Gun Metallic

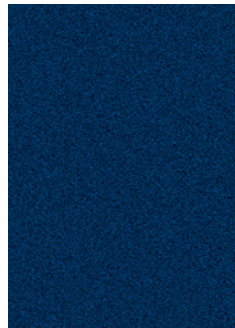
Boulder Gray Pearl¹⁸

Sunset Drift ChromaFlair®18

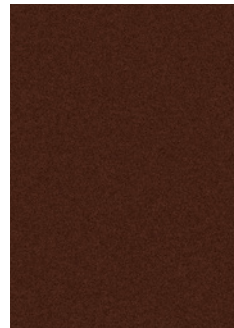
	S	SV	SL	PLT	S	SV	SL	PLT	S	SV	SL	PLT	S	SV	SL	PLT	S	SV	SL	PLT
Graphite Cloth																				
Graphite Leatherette																				
Cashmere Leatherette																				
Graphite Leather ²																				
Cashmere Leather ²																				
Mocha Semi-aniline Leather ²																				
Graphite Semi-aniline Leather ²																				
Cashmere Semi-aniline Leather ²																				

☒ Standard
☐ Optional

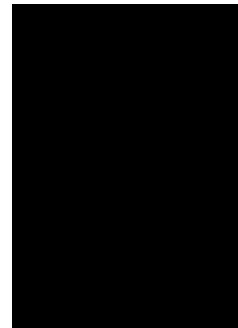
Nissan has taken care to ensure that the color swatches presented here are the closest possible representations of actual vehicle colors. Swatches may vary slightly due to the printing process and whether viewed in daylight, fluorescent or incandescent light. Please see the actual colors at your dealer.

Scarlet Ember Tintcoat¹⁸

Deep Blue Pearl



Mocha Almond Pearl



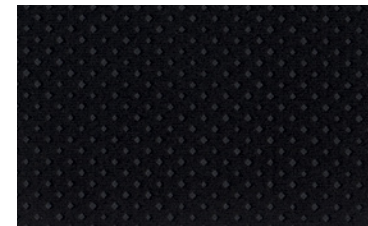
Magnetic Black Pearl

	S	SV	SL	PLT	S	SV	SL	PLT	S	SV	SL	PLT	S	SV	SL	PLT
Graphite Cloth																
Graphite Leatherette																
Cashmere Leatherette																
Graphite Leather ²																
Cashmere Leather ²																
Mocha Semi-aniline Leather ²																
Graphite Semi-aniline Leather ²																
Cashmere Semi-aniline Leather ²																

CHOOSE YOUR INTERIOR



Nissan Murano® Platinum AWD shown in Cashmere Semi-aniline Leather.²



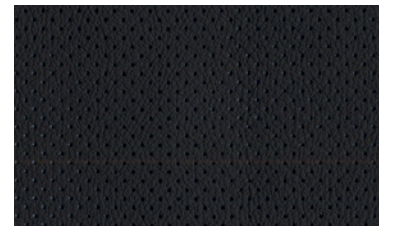
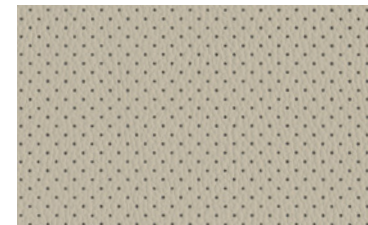
Graphite Cloth
S



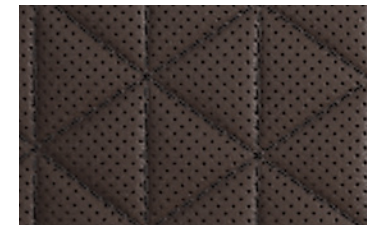
Graphite Leatherette
SV | Midnight Edition



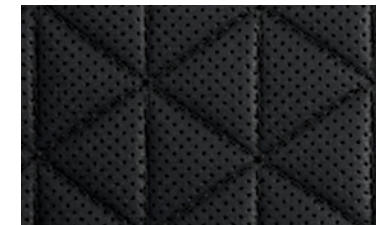
Cashmere Leatherette
SV

Graphite Leather²
SL

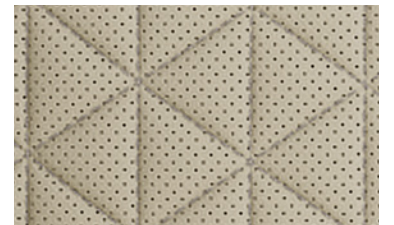
Cashmere Leather²
SL



Mocha Semi-aniline Leather²
Platinum



Graphite Semi-aniline Leather²
Platinum








Cashmere Semi-aniline Leather²
Platinum

CHOOSE YOUR TRIM LEVEL

S

260-hp, 3.5-liter V6 engine, Xtronic CVT® (Continuously Variable Transmission), Front-Wheel Drive, Intelligent Forward Collision Warning,¹⁹ Automatic Emergency Braking with Pedestrian Detection,¹⁰ Intelligent Lane Intervention,¹⁴ Blind Spot Warning,¹³ Rear Cross Traffic Alert,¹² RearView Monitor,²⁰ Rear Sonar System,²¹ Rear Automatic Braking,¹¹ Vehicle Dynamic Control (VDC) with Traction Control System (TCS),²² Active Brake Limited Slip (ABLS), Hill start assist, High Beam Assist, Intelligent Driver Alertness,²³ 18" Machine-finished aluminum-alloy wheels, LED headlights with LED signature Daytime Running lights, Automatic on/off headlights, LED taillights, Chrome door handles, Active Grille Shutters, Rear Door Alert,²⁴ Dual Zone Automatic Temperature Control with in-cabin microfilter, Rear passenger air conditioning vents, Steering wheel-mounted cruise control, Nissan Intelligent Key® with Push Button Ignition, Remote front windows down, Tilt and telescoping steering column, Vehicle-speed-sensing variable intermittent windshield wipers, Intermittent rear window wiper, Two 12-volt DC power outlets,¹ Eight cargo area tie-down hooks and rings, 6-way manual driver's seat, 4-way manual front-passenger's seat, 60/40-split fold-down rear seatbacks with cargo area-accessible levers, Reclining rear seatbacks with center armrest,²⁵ Cloth seat trim, 7" Advanced Drive-Assist™ Display,²⁶ NissanConnect® 8" color display with multi-touch control,⁵ Apple CarPlay® integration,⁵ Android Auto™ compatibility,⁵ Hands-free Text Messaging Assistant,⁶ Bluetooth® Hands-free Phone System,⁵ AM/FM/CD audio system with six speakers, Streaming Audio via Bluetooth®,⁵ Auxiliary audio input jack,¹ Two USB-A ports and two USB-C ports,¹ SiriusXM Radio with 3-month trial subscription,⁵ Nissan Advanced Air Bag System²⁷






SV

INCLUDES S EQUIPMENT PLUS:

Intelligent Cruise Control,²⁸ Front and Rear Sonar System,²¹ LED fog lights, Black roof rails,¹⁵ Power heated outside mirrors with LED turn signal indicators, Remote Engine Start System with Intelligent Climate Control,²⁹ Auto-dimming rearview mirror, 10-way power driver's seat, including 2-way power lumbar support, 4-way power front-passenger's seat, Heated front seats, Leatherette seats, Leather-wrapped steering wheel and shift knob

AVAILABLE PACKAGE:
Midnight Edition Package

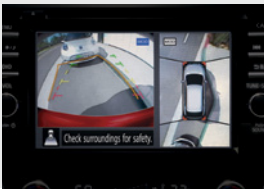




SL

INCLUDES SV EQUIPMENT PLUS:

Intelligent Around View® Monitor,¹⁶ Traffic Sign Recognition,³⁰ 20" Machine-finished aluminum-alloy wheels, Silver roof rails,¹⁵ Power heated outside mirrors with LED turn signal indicators and reverse tilt-down feature, Motion Activated Liftgate, Driver's seat and outside mirrors position memory, HomeLink® Universal Transceiver, Adjustable ambient LED interior lighting, Heated front and rear outboard seats, Leather-appointed seats, Heated steering wheel, Nissan Door to Door Navigation with Premium Traffic,⁷ SiriusXM Traffic and Travel Link with 3-month trial access,⁵ Bose Premium Audio System with 11 speakers, including dual subwoofers




AVAILABLE PACKAGE:
Moonroof Package



PLATINUM

INCLUDES SL EQUIPMENT PLUS:

Distinctive 20" dark hyper silver aluminum-alloy wheels, Dual Panel Panoramic Moonroof, Power-tilt and power-telescoping steering column with memory position, Climate-controlled front seats (heated and cooled), Semi-aniline leather-appointed seats with diamond-quilted inserts, Smooth leather-wrapped steering wheel, Contrast micro-piping for seat, door, and console inserts, NissanConnect® Services powered by SiriusXM with trial access to 3-year Select and 6-month Premium Plus packages⁵





CHOOSE YOUR PACKAGE

MIDNIGHT EDITION

SV


20" Black aluminum-alloy wheels, Black outside mirrors, Black roof rails,¹⁵ Black V-Motion grille, Black front and rear lower bumper accents, Black body side molding, Black exterior badges, Black License Plate Finisher, Splash guards, Illuminated kick plates



MOONROOF PACKAGE

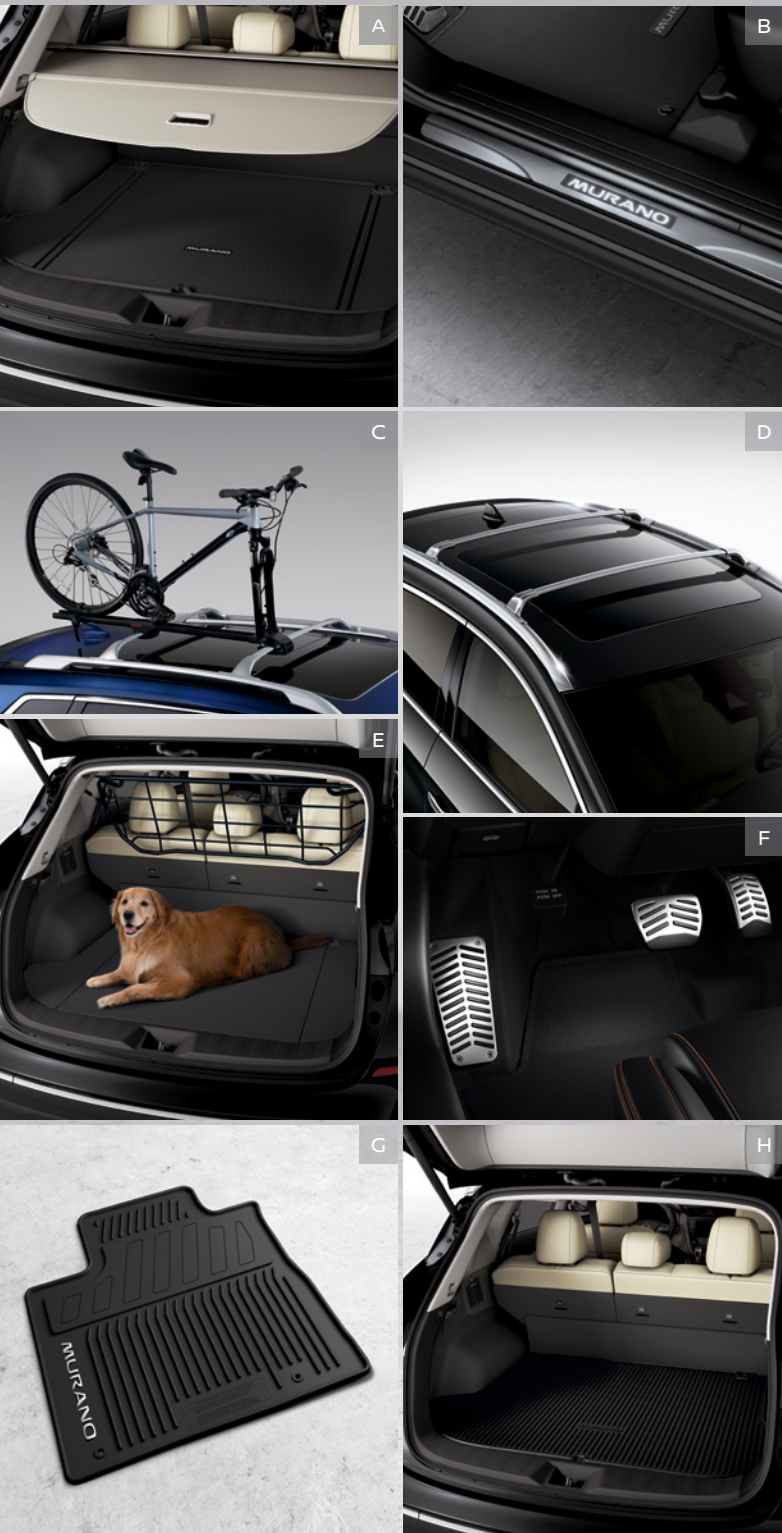
SL

Dual Panel Panoramic Moonroof



Images may show additional available equipment.

CHOOSE YOUR ACCESSORIES



A. Rear Cargo Cover and Carpeted Cargo Area Protector
Keep it covered and keep it protected. (Sold separately)

B. Illuminated Kick Plates
Light up your entrance every time you open the door.

C. Affiliated Yakima® ForkLift^{15, 32, 33, 34}
Give your bike a ride for once.

D. Roof Rail Crossbars^{15, 32}
Bring along more cargo and leave space inside to stretch out.

E. Pet Divider
Keep your pet secure behind 2nd-row seats.

F. Stainless Steel Sport Pedals³⁴
Step up your style with added grip and a track-inspired look.

G. All-Season Floor Mats
No rain, sleet, or snow will muck up your Murano®

H. All-Season Cargo Area Protector
Preserve and protect your cargo – and your Murano.

Additional Accessories:

- Carpeted Floor Mats
- Remote Engine Start System²⁹
- Portable Cargo Organizer
- Cargo Net
- Hatch Tent
- Impact Sensor
- Wheel Locks
- Clear Rear Bumper Protector
- Interior Accent Lighting
- 20" Satin Black Aluminum-alloy Wheels
- 20" Black Aluminum-alloy Wheels
- Frameless Auto-dimming Rearview Mirror with Universal Remote
- Affiliated Yakima® SkyBox 16³³
- Affiliated Yakima® FatCat EVO 6³³
- Affiliated Yakima® JayLow³³
- Affiliated Yakima® FrontLoader³³
- Affiliated Yakima® ForkLift³³
- And More

For more information and to shop online for Murano® Genuine Nissan Accessories, go to bit.ly/22Murano-Accys

NISSAN MURANO® ACCESSORIES

Turn brand-new into all you

Every Genuine Nissan Accessory is custom-fit, custom-designed and durability-tested. Each one is backed by Nissan's 3-year/36,000-mile (whichever occurs first) limited warranty (if installed by dealer at the time of purchase), and can be financed when installed by dealer at time of purchase.³¹ Affiliated Yakima® accessories are not warranted by Nissan. Refer to product manufacturer for warranty details. Nissan Limited Warranty does not cover damages or failures to the vehicle caused by improper installation or alterations of any Nissan approved accessory or component. Contact your dealer/retailer for details.



Nissan Murano® Platinum AWD shown in Magnetic Black Pearl with 20" Dark Charcoal Aluminum-alloy Wheels, Roof Rail Crossbars,^{15, 32} Satin Chrome Rear Bumper Protector, Satin Chrome Rear Underbody Trim, Splash Guards, Exterior Ground Lighting, Tow Hitch Receiver,³⁵ Hitch Ball Mount,³⁵ and Hitch Ball.³⁵

SPECIFICATIONS

Engine	S	SV	SL	PLAT
3.5-liter DOHC 24-valve V6 engine				
Horsepower – 260 hp @ 6,000 rpm				
Torque – 240 lb-ft @ 4,400 rpm				
Continuously Variable Valve Timing Control System (CVTCS) on intake valves				
Variable induction system				
Nissan Direct Ignition System				
Double-tipped iridium spark plugs				
Electronic drive-by-wire throttle				

Drivetrain				
Front-Wheel Drive (FWD)				
Intelligent All-Wheel Drive (AWD) ³				
Xtronic CVT® (Continuously Variable Transmission)				

Brakes				
4-wheel vented disc brakes				
4-wheel Anti-Lock Braking System (ABS) – G-sensor on AWD models				
Electronic Brake force Distribution (EBD)				
Brake Assist ³⁶				

Suspension/Chassis Bracing/Steering				
Independent strut front suspension				
Multi-link independent rear suspension				
Front and rear stabilizer bars				
Vehicle-speed-sensitive power steering				

Driver Assistance Technologies				
Cruise Control				
Intelligent Cruise Control ²⁸				
Intelligent Forward Collision Warning ¹⁹				
Automatic Emergency Braking with Pedestrian Detection ¹⁰				
Intelligent Lane Intervention ¹⁴				
Blind Spot Warning ¹³				
Rear Cross Traffic Alert ¹²				
RearView Monitor ²⁰				
Intelligent Around View® Monitor ¹⁶				
Rear Sonar System ²¹				
Front and Rear Sonar System ²¹				
Rear Automatic Braking ¹¹				
Vehicle Dynamic Control (VDC) with Traction Control System (TCS) ²²				
Active Brake Limited Slip (ABLS)				
Hill start assist				
High Beam Assist				
Traffic Sign Recognition ³⁰				
Intelligent Driver Alertness ²³				

Wheels/Tires				
18" x 7.5" Machine-finished aluminum-alloy wheels				
20" x 7.5" Black aluminum-alloy wheels				
20" x 7.5" Machine-finished aluminum-alloy wheels				
Distinctive 20" x 7.5" dark hyper silver aluminum-alloy wheels				

■ Standard □ Optional M Midnight Edition S SL Moonroof Package

Wheels/Tires (continued)	S	SV	SL	PLAT
P235/65R18 All-season tires				
P235/55R20 All-season tires				

Exterior Features				
LED headlights with LED signature Daytime Running Lights				
Automatic on/off headlights				
LED fog lights				
LED taillights				
Black roof rails ¹⁵				
Silver roof rails ¹⁵				
Dual Panel Panoramic Moonroof				
Chrome door handles				
Black outside mirrors				
Black V-Motion grille				
Black front and rear lower bumper accents				
Black body side molding				
Black exterior badges				
Black License Plate Finisher				
Splash guards				
Illuminated kick plates				
Power outside mirrors				
Power heated outside mirrors with LED turn signal indicators				
Power heated outside mirrors with LED turn signal indicators and reverse tilt-down feature				
Active Grille Shutters				
Motion Activated Liftgate				

Comfort/Convenience				
Rear Door Alert ²⁴				
Dual Zone Automatic Temperature Control with in-cabin microfilter				
Rear passenger air conditioning vents				
HomeLink® Universal Transceiver				
Driver's seat and outside mirrors position memory				
Steering-wheel position memory				
Steering wheel-mounted cruise control				
Nissan Intelligent Key® with Push Button Ignition				
Remote Engine Start System with Intelligent Climate Control ²⁹				
Remote front windows down				
Tilt and telescoping steering column				
Power-tilt and power-telescoping steering column				
Vehicle-speed-sensing variable intermittent windshield wipers				
Intermittent rear window wiper				
Auto-dimming rearview mirror				
Two 12-volt DC power outlets ¹				
Adjustable ambient LED interior lighting				
Eight cargo area tie-down hooks and rings				

Seating/Appointments				
6-way manual driver's seat				
10-way power driver's seat, including 2-way power lumbar support				
4-way manual front-passenger's seat				

Seating/Appointments (continued)	S	SV	SL	PLAT
4-way power front-passenger's seat				
Heated front seats				
Climate-controlled front seats (heated and cooled)				
Heated rear outboard seats				
60/40-split fold-down rear seatbacks with cargo area-accessible levers				
Reclining rear seatbacks with center armrest ²⁵				
Cloth-wrapped A-pillar				
Cloth seat trim				
Leatherette seats				
Leather-appointed seats				
Semi-aniline leather-appointed seats with diamond-quilted inserts				
Leather-wrapped steering wheel				
Leather-wrapped shift knob				
Smooth leather-wrapped steering wheel				
Heated steering wheel				

Infotainment				
7" Advanced Drive-Assist™ Display ²⁶				
NissanConnect® 8" color display with multi-touch control ⁵				
Nissan Door to Door Navigation with Premium Traffic ⁷				
SiriusXM Traffic and Travel Link with 3-month trial access ⁵				
NissanConnect® Services powered by SiriusXM with trial access to 3-year Select and 6-month Premium Plus packages ⁵				
Apple CarPlay® integration ⁵				
Android Auto™ compatibility ⁵				
Hands-free Text Messaging Assistant ⁶				
Bluetooth® Hands-free Phone System ⁵				
AM/FM/CD audio system with six speakers				
Bose Premium Audio System with 11 speakers, including dual subwoofers				
Streaming Audio via Bluetooth® ⁵				
Auxiliary audio input jack ¹				
Two USB-A ports and two USB-C ports ¹				

Safety/Security				
Nissan Advanced Air Bag System with dual-stage supplemental front air bags with seat-belt and occupant-classification sensors ²⁷				
Seat-mounted side-impact supplemental air bags for front- and rear-seat outboard occupants ²⁷				
Roof-mounted curtain supplemental air bags with rollover sensor for side-impact and rollover head protection for front and rear-seat outboard occupants ²⁷				
Driver and front-passenger supplemental knee air bag ²⁷				
LATCH System (Lower Anchors and Tethers for Children)				
Tire Pressure Monitoring System (TPMS) with individual tire pressure display and Easy-Fill Tire Alert ^{37, 38}				

DIMENSIONS/CAPACITIES/MPG

Exterior Dimensions – Inches	
Wheelbase	111.2
Overall length	192.4
Overall width/height	75.4/67.8
Track width (front/rear)	64.6

Interior Dimensions (front/rear) – Inches	
Head room	39.9/39.8
Head room with Dual Panel Panoramic Moonroof	38.1/37.8
Leg room	40.5/38.7
Hip room	55.4/55.2
Shoulder room	59.5/58.9
Step-in height	15.8/15.1

Capacities	
Seating capacity	5
Interior passenger volume (front/rear)	
Without moonroof	55.7/52.4
With moonroof	53.1/49.7
Cargo volume with rear seat up (cu. ft.) ¹⁵	
Without moonroof/with moonroof	32.1/31.1
Cargo volume with rear seat down (cu. ft.) ¹⁵	
Without moonroof/with moonroof	67.0/65.0
Fuel tank (gals.)	19.0

2022 EPA Fuel Economy Estimates ⁴	
City/Highway/Combined MPG	
FWD	20/28/23
AWD	20/28/23

NISSAN ROADSIDE ASSISTANCE

Your peace of mind is on us. For 36 months or 36,000 miles, whichever comes first, your new Nissan is covered for the following:³⁹

- Flat-tire changes
- Trip Interruption benefits
- Jump starts
- Vehicle lockouts
- Emergency fuel delivery

Follow Nissan on:



visit [NissanUSA.com/murano](https://www.nissanusa.com/murano)
PRINTED IN USA



Sign up to get the latest on
Nissan vehicles, news, and events.

<https://www.nissanusa.com/brochures/request-brochure.html>